

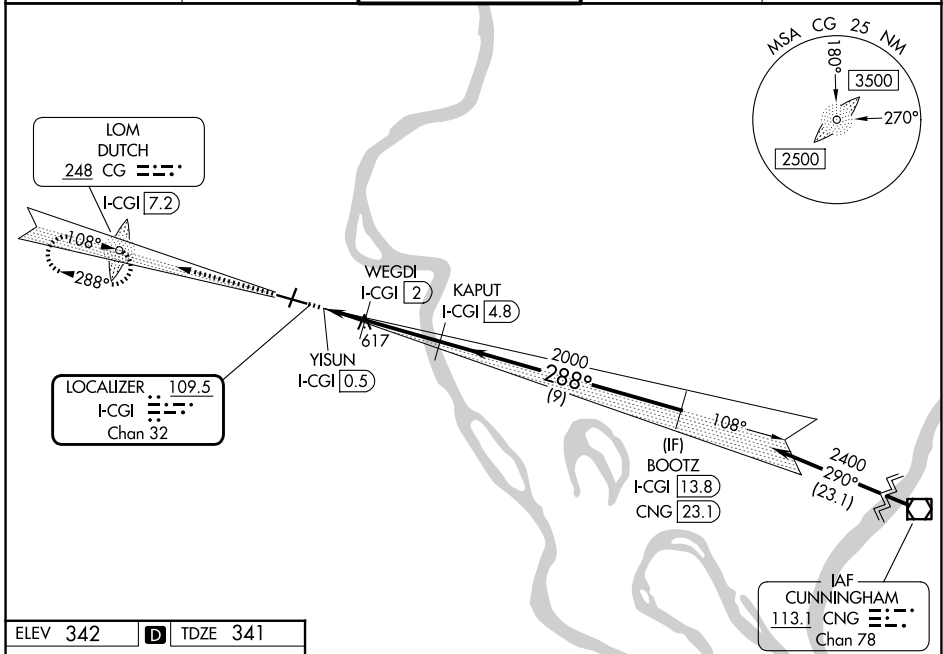
LOC/DME I-CGI <b>109.5</b> Chan <b>32</b>	APP CRS <b>288°</b>	Rwy Ldg TDZE <b>341</b> Apt Elev <b>342</b>
---	------------------------	---

# LOC BC RWY 28

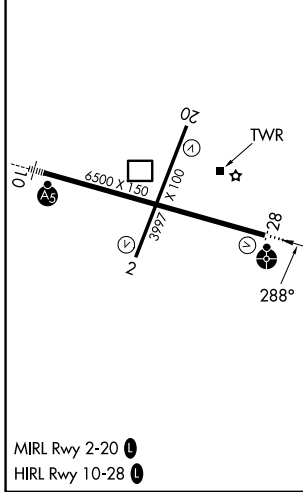
CAPE GIRARDEAU RGNL (CGI)

DME required.	ODALS	MISSED APPROACH: Climb to 2400 on I-CGI west course (288°) to DUTCH LOM/I-CGI 7.2 DME and hold.
Rwy 28 helicopter visibility reduction below 3/4 SM NA.		

ASOS <b>120.55</b>	MEMPHIS CENTER <b>133.65 292.15</b>	CAPE GIRARDEAU TOWER * <b>125.525</b> (CTAF)	GND CON <b>124.7</b>	UNICOM <b>122.95</b>
-----------------------	--	---	-------------------------	-------------------------



ELEV <b>342</b>	<b>D</b>	TDZE <b>341</b>
-----------------	----------	-----------------



## BACK COURSE

	2400 I-CGI W crs (288°)	CG 	Use I-CGI DME when on localizer course. Disregard glide slope indications.	BOOTZ I-CGI (13.8)
	YISUN I-CGI (0.5)	WEGDI I-CGI (2)	KAPUT I-CGI (4.8)	
	1060	2000	2400	
	0.7	0.9	0.6	2.8 NM
	A		B	
CATEGORY	A		B	
S-28	880-3/4 539 (600-3/4)		880-13/8 539 (600-13/8)	
CIRCLING	880-1 538 (600-1)		960-1 618 (700-1)	
	C		D	
	880-2 738 (800-2)		1080-2 1080-2 1/4 738 (800-2 1/4)	

NC-3, 25 DEC 2025 to 22 JAN 2026

NC-3, 25 DEC 2025 to 22 JAN 2026