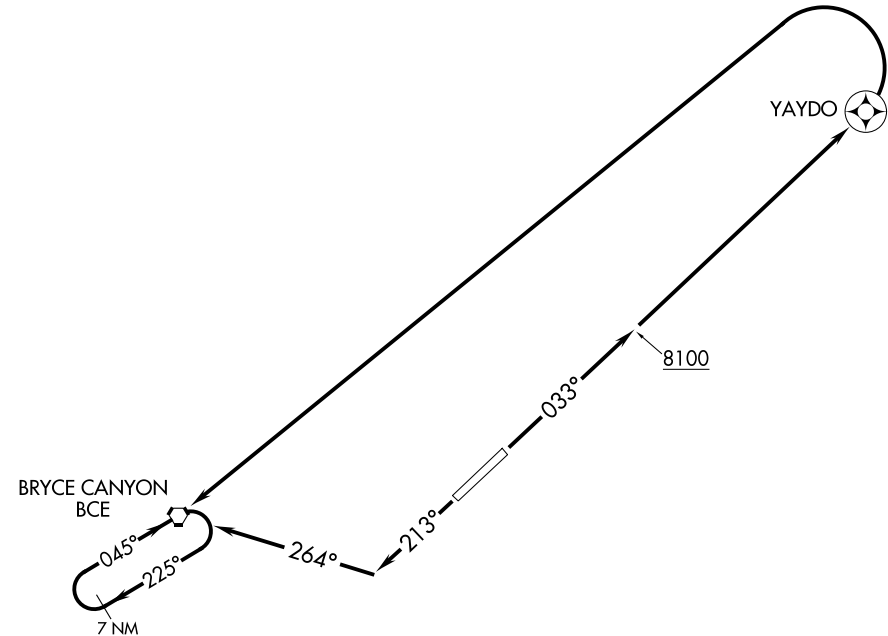


SALT LAKE CITY CENTER
133.6 269.25



NOTE: GPS required.
NOTE: RNAV 1.

TAKEOFF MINIMUMS

Rwy 3: Standard with minimum climb of 285' per NM to 12100.
Rwy 21: Standard with minimum climb of 310' per NM to 10500.

TAKEOFF OBSTACLE NOTES

Rwy 3: Vehicles on road beginning 135' from DER, 374' left of centerline, 15' AGL/7588' MSL.
Fence 38' from DER, 377' right of centerline, 8' AGL/7558' MSL.
Rwy 21: Fence 23' from DER, 375' left of centerline, 4' AGL/7593' MSL.
Fence 296' from DER, 530' right of centerline, 4' AGL/7601' MSL.
Vehicles on road beginning 49' from DER, 28' right of centerline, 15' AGL/7623' MSL.
Multiple poles beginning 867' from DER, 706' right of centerline, 39' AGL/7638' MSL.

NOTE: Chart not to scale.

DEPARTURE ROUTE DESCRIPTION

TAKEOFF RUNWAY 3: Climb heading 033° to 8100, then climb to 13300 direct YAYDO and left turn direct BCE VORTAC. . . .

TAKEOFF RUNWAY 21: Climb heading 213° to intercept course 264° to BCE VORTAC and hold SW, RT, 045° inbound; continue climb-in-hold to MEA for route of flight. . . .

. . . .before proceeding on course.