

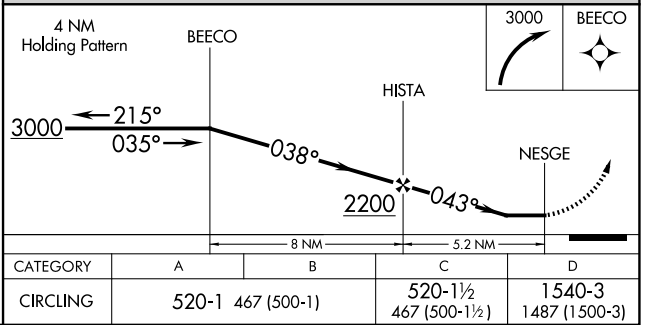
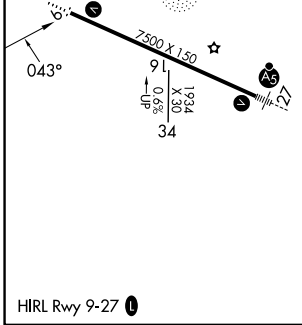
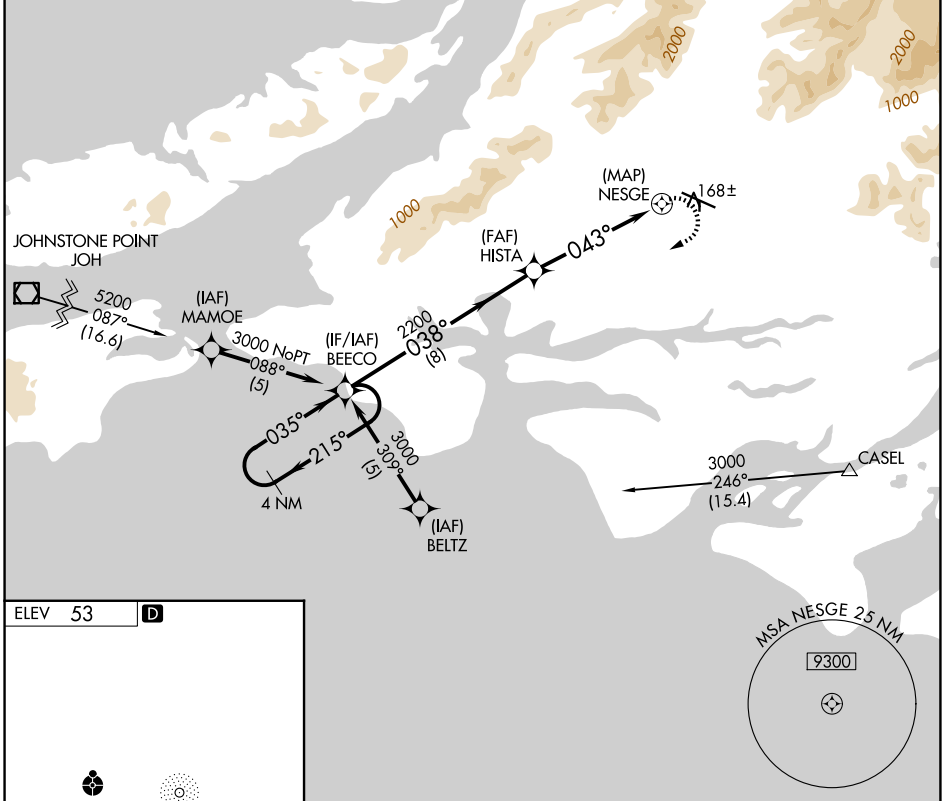
APP CRS	Rwy Ldg	N/A
<b>043°</b>	TDZE	N/A
	Apt Elev	<b>53</b>

# RNAV (GPS)-B

MERLE K (MUDHOLE) SMITH (CDV)(PACV)

RNP APCH-GPS.	<p><b>⚠</b> Circling to Rwy 16/34 NA at night. When local altimeter setting not received, use Valdez altimeter setting and increase all MDAs 120 feet. Circling NA north of Rwy 9/27. Rwy 16/34 helicopter visibility reduction below 1 SM NA.</p>	<p>MISSED APPROACH: Climbing right turn to 3000 direct BEECO and hold.</p>

ASOS <b>134.8</b>	ANCHORAGE CENTER <b>119.3 133.6 269.4</b>	JUNEAU RADIO <b>122.2 123.6 (CTAF) 1</b>
----------------------	--	---



CATEGORY	A	B	C	D
CIRCLING	520-1	467 (500-1)	520-1½ 467 (500-1½)	1540-3 1487 (1500-3)

AK, 27 NOV 2025 to 22 JAN 2026

AK, 27 NOV 2025 to 22 JAN 2026