

HI-TACAN X RWY 06L

TACAN UAM Chan 54	APCH CRS 065°	Rwy ldg 10,527 TDZE 539 Arpt Elev 617
-----------------------------	-------------------------	--

[USAF]

ANDERSEN AFB (PGUA)

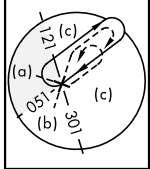
RADAR or DME required

▼ * When ALS inop, increase CAT AB RVR to 55, vis to 1 mile; CAT CDE vis to 1½ miles.
** Circling not authorized NW of Rwy 06L-24R.



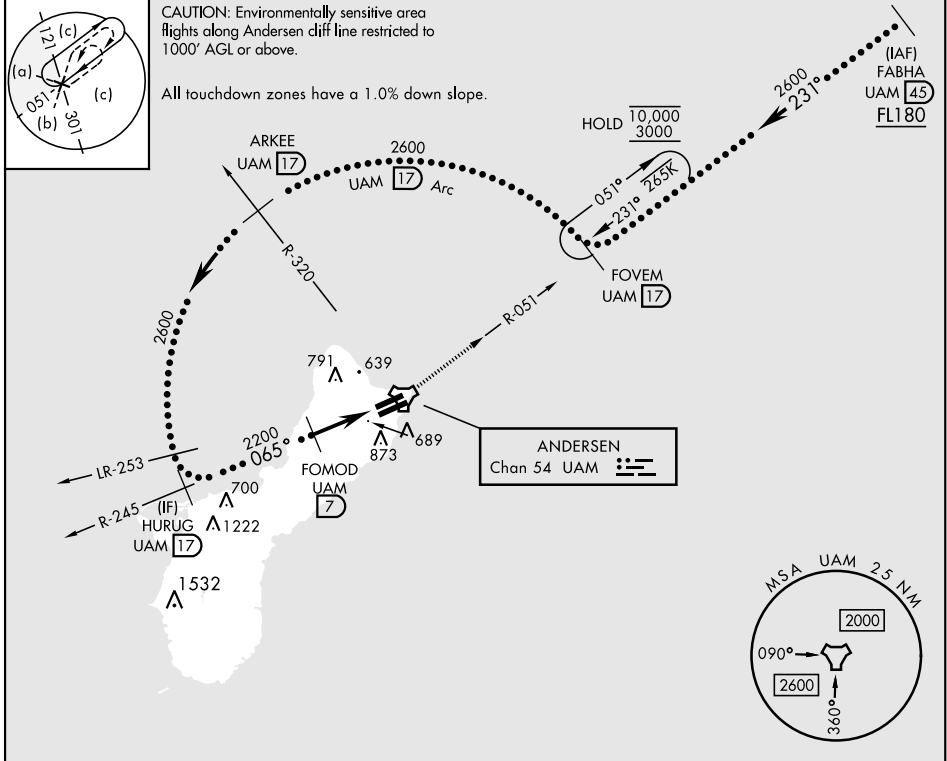
MISSED APPROACH: Climb to 3000, intercept UAM R-051 to FOVEM and hold.

ATIS 118.175 254.325	GUAM APP CON 119.8 269.0	TOWER 126.2 233.7	GND CON 121.7 275.8
--------------------------------	------------------------------------	-----------------------------	-------------------------------

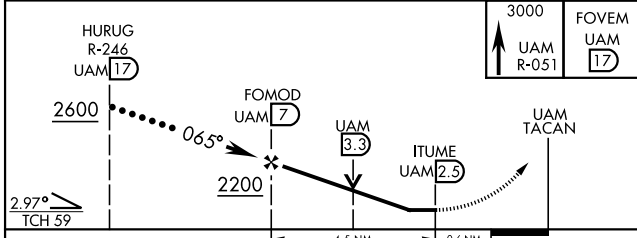


CAUTION: Environmentally sensitive area flights along Andersen cliff line restricted to 1000' AGL or above.

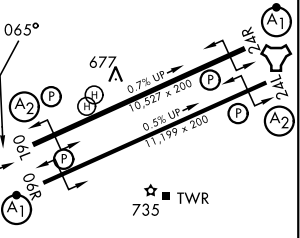
All touchdown zones have a 1.0% down slope.



EMERG SAFE ALT 100 NM 2900



ELEV 617	TDZE 539
----------	----------



CATEGORY	A	B	C	D	E
S-06L*	1040/40	501 (500-¾)	1040/1¼	501 (500-1½)	
CIRCLING**	1060-1	1080-1	1240-1¾	1240-2	1240-2¼
	443 (500-1)	463 (500-1)	623 (700-1¾)	623 (700-2)	623 (700-2¼)

HIRL all rwys

HI-TACAN X RWY 06L

PAC, 27 NOV 2025 to 22 JAN 2026

PAC, 27 NOV 2025 to 22 JAN 2026