

YIGO, GUAM I, GUAM

TACAN Y RWY 24L

VORTAC UNZ 115.8 Chan T05	APCH CRS 236°	Rwy ldg TDZE Arprt Elev	11,199 607 617
---	-------------------------	-------------------------------	---

(USAF)

ANDERSEN AFB (PGUA)

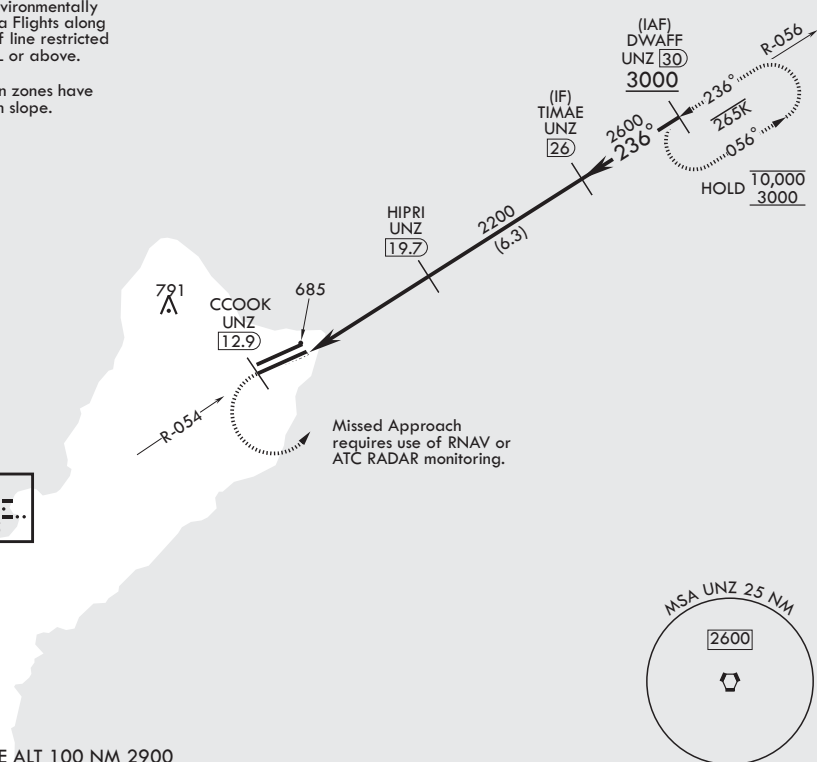
⚠ * When ALS inop increase CAT AB RVR to 55, vis to 1 mile; CAT CDE RVR to 50, vis to 1 mile.
** Circling not authorized NW of Rwy 06L-24R.

SALS **(A2)** MISSED APPROACH: Climb to 3000 direct CCOOK, then climbing left turn to intercept UNZ R-056 and hold.

ATIS 118.175 254.325	GUAM APP CON/DEP CON 119.8 269.0	TOWER 126.2 233.7	GND CON 121.7 275.8
--------------------------------	--	-----------------------------	-------------------------------

CAUTION: Environmentally Sensitive Area Flights along Andersen cliff line restricted to 1000' AGL or above.

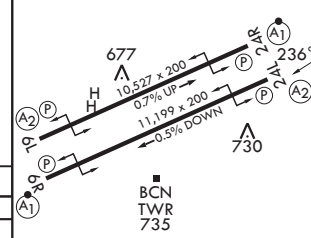
All touchdown zones have a 1.0% down slope.



NIMITZ
115.8 UNZ
Chan 105

EMERG SAFE ALT 100 NM 2900

3000	CCOOK UNZ 12.9	DWAFF UNZ 30	ELEV 617	TDZE 607	
VORTAC	WEVUS UNZ 14.8	HIPRI UNZ 19.7	TIMAE UNZ 26	DWAFF UNZ 30	
<p>Profile view showing glide path from 2200 to 3000 feet. Distance markers: 1.1 NM, 4.9 NM. Angle: $\leq 2.94^\circ$ TCH 43.</p>					
CATEGORY	A	B	C	D	E
S-24L*	940/40	333 (400-3/4)	940/45	333 (400-3/4)	
CIRCLING**	1060-1 443 (500-1)	1080-1 463 (500-1)	1240-1 1/4 623 (700-1 1/4)	1240-2 623 (700-2)	1240-2 1/4 623 (700-2 1/4)
HIRL all rwys					



PAC, 27 NOV 2025 to 22 JAN 2026

PAC, 27 NOV 2025 to 22 JAN 2026

YIGO, GUAM I, GUAM

13°35'N - 144°56'E

ANDERSEN AFB (PGUA)

Amdt 2 17JUN21
TERPS

TACAN Y RWY 24L