

YIGO, GUAM I, GUAM

TACAN Y RWY 24R

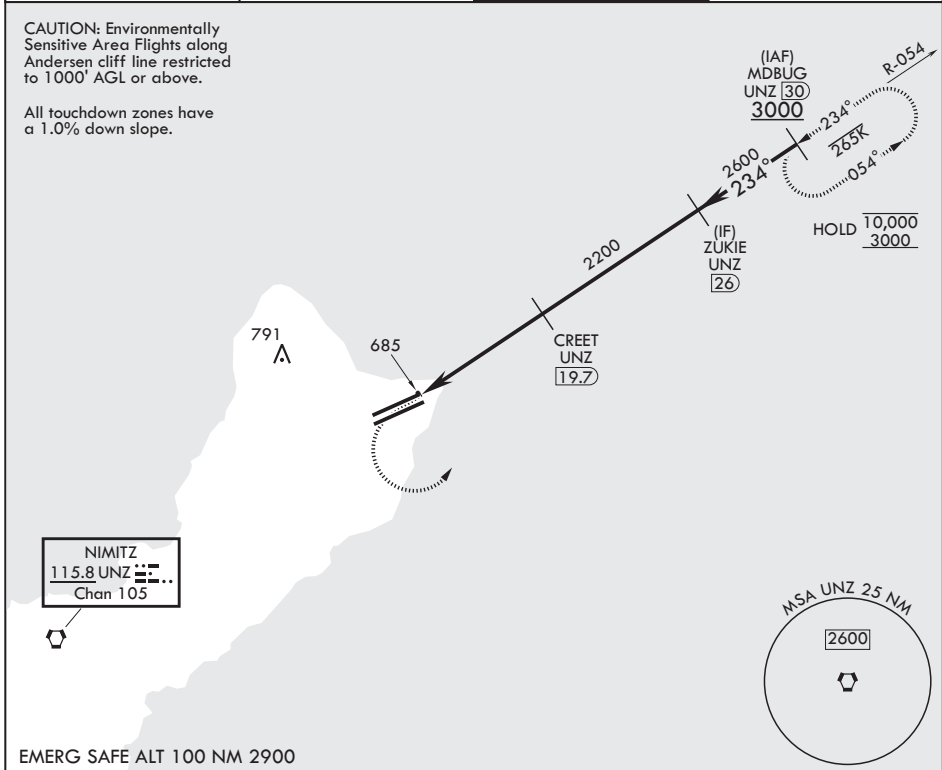
VORTAC UNZ 115.8 Chan 105	APCH CRS 234°	Rwy ldg 10,527	TDZE 617
		Arprt Elev 617	

(USAF)

ANDERSEN AFB (PGUA)

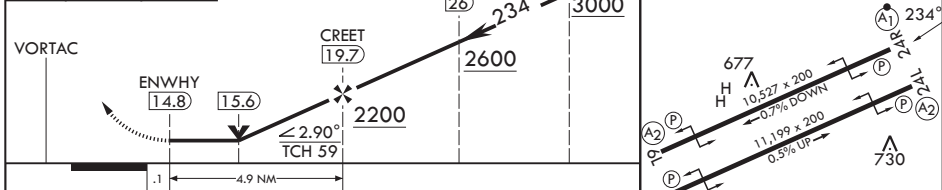
RNAV or RADAR required for missed approach	ALS-F1	MISSED APPROACH: Climb to 1100, then climbing left turn to intercept UNZ R-054 to MDBUG and hold.
<p>▼ * When ALS inop increase CAT AB RVR to 55, vis to 1 mile; CAT CDE RVR to 50, vis to 1 mile. ** Circling not authorized NW of Rwy 06L-24R.</p>		

ATIS 118.175 254.325	GUAM APP CON/DEP CON 119.8 269.0	TOWER 126.2 233.7	GND CON 121.7 275.8
-------------------------	-------------------------------------	----------------------	------------------------

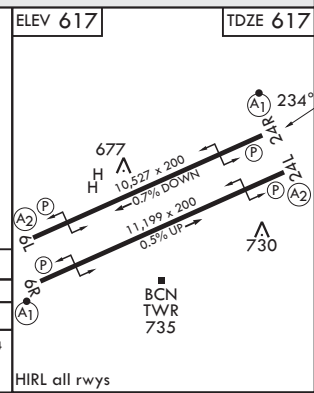


EMERG SAFE ALT 100 NM 2900

1100	3000	MDBUG UNZ 30	ELEV 617	TDZE 617
		ZUKIE UNZ 26		



CATEGORY	A	B	C	D	E
S-24R*	940/24 323 (400-½)		940/40 323 (400-¾)		
CIRCLING**	1060-1 443 (500-1)	1080-1 463 (500-1)	1240-1¼ 623 (700-1¼)	1240-2 623 (700-2)	1240-2¼ 623 (700-2¼)



YIGO, GUAM I, GUAM

13°35'N - 144°56'E

ANDERSEN AFB (PGUA)

Amdt 3 10AUG23
TERPS

TACAN Y RWY 24R

PAC, 27 NOV 2025 to 22 JAN 2026

PAC, 27 NOV 2025 to 22 JAN 2026