

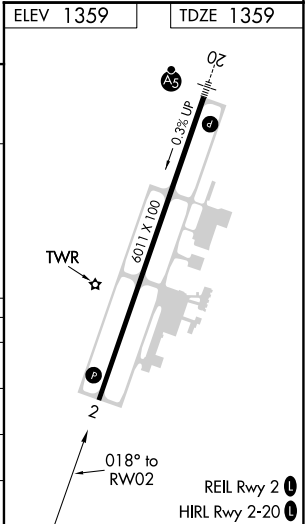
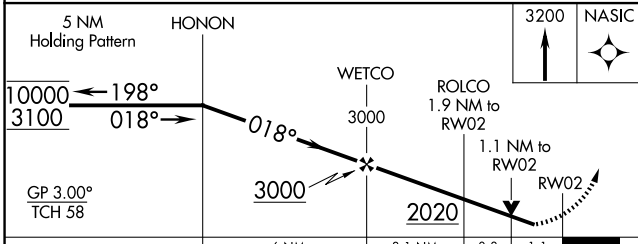
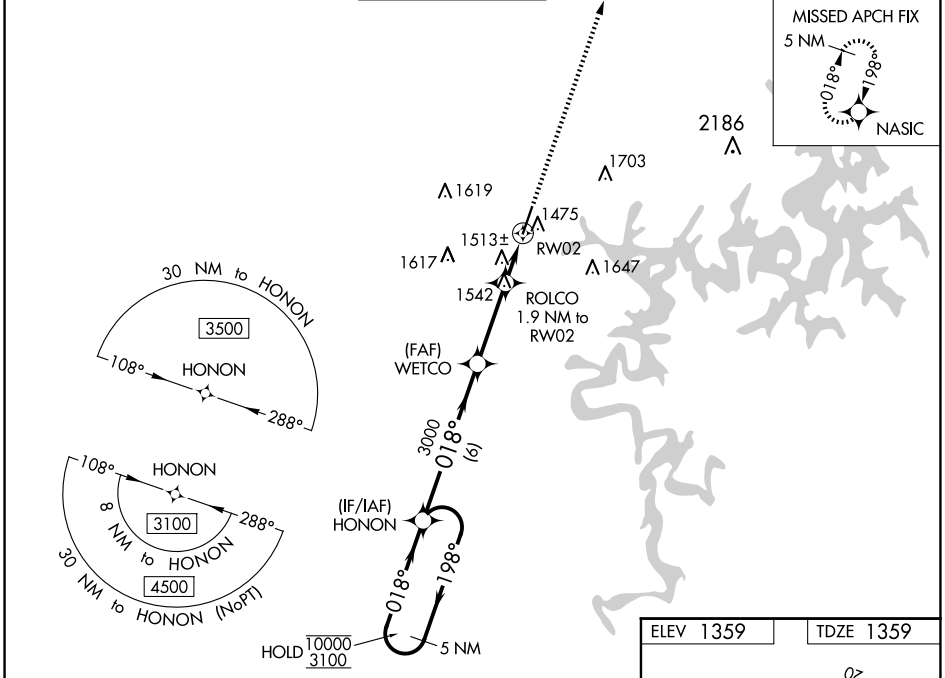
WAAS CH 82640 W02A	APP CRS 018°	Rwy Idg TDZE 1359 Apt Elev 1359	6011
--	------------------------	---	-------------

RNAV (GPS) RWY 2

ROGERS EXEC - CARTER FLD (ROG)

RNP APCH-GPS.		MISSED APPROACH: Climb to 3200 direct NASIC and hold.	
Rwy 2 helicopter visibility reduction below 3/4 SM NA. For uncompensated Baro-VNAV systems, LNAV/VNAV NA below -17°C or above 54°C.			

AWOS-3PT 134.375	RAZORBACK APP CON* 126.6 305.2	ROGERS TOWER* 119.375 (CTAF) 0	GND CON 118.0	CLNC DEL 121.75	CLNC DEL 121.75 <small>(When twr closed)</small>
----------------------------	--	--	-------------------------	---------------------------	---



CATEGORY	A	B	C	D
LPV DA		1620-7/8	261 (300-7/8)	
LNAV/VNAV DA		1674-7/8	315 (400-7/8)	
LNAV MDA	1780-1	421 (500-1)	1780-1 1/4	421 (500-1 1/4)
CIRCLING	1840-1	481 (500-1)	2020-1 3/4 661 (700-1 3/4)	2020-2 661 (700-2)

SC-1, 25 DEC 2025 to 22 JAN 2026

SC-1, 25 DEC 2025 to 22 JAN 2026