

WAAS CH 97715 W09A	APP CRS 091°	Rwy Ldg TDZE 1623 Apt Elev 1623
--	------------------------	---

RNAV (GPS) RWY 9

RHINELANDER/ONEIDA COUNTY (RHI)

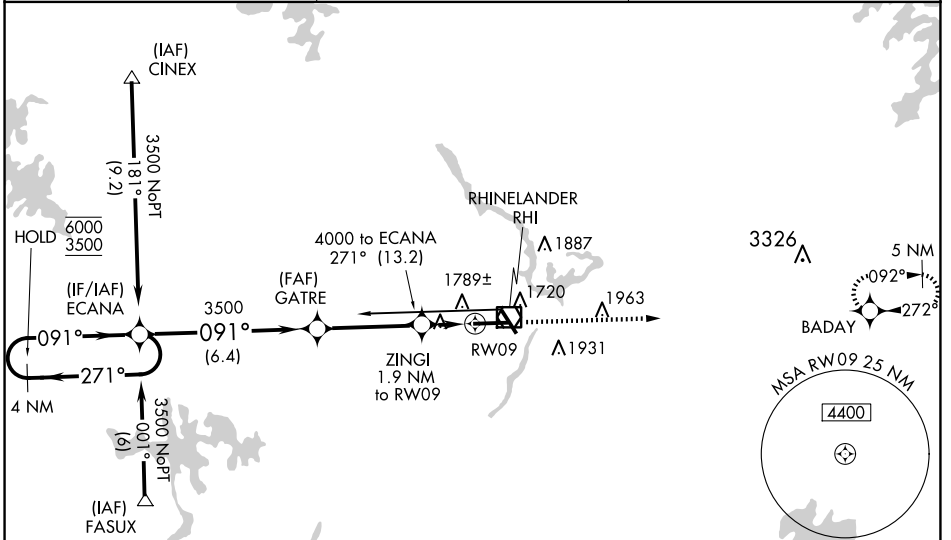
RNP APCH - GPS.

MALSR

For uncompensated Baro-VNAV systems, LNAV/VNAV NA below -18°C or above 54°C. For inop ALS, increase LNAV Cats C/D visibility to 1½ SM.

MISSED APPROACH: Climb to 4500 direct BADAY and hold.

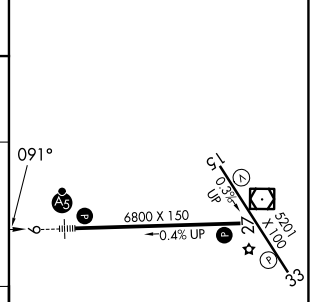
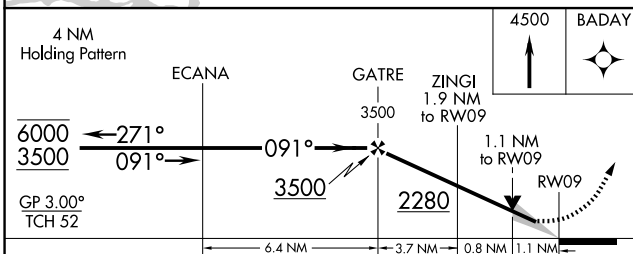
ASOS 126.825	MINNEAPOLIS CENTER 133.65 281.5	UNICOM 123.0 (CTAF)
------------------------	---	-------------------------------



EC-3, 25 DEC 2025 to 22 JAN 2026

EC-3, 25 DEC 2025 to 22 JAN 2026

ELEV 1623	TDZE 1623
-----------	-----------



CATEGORY	A	B	C	D
LPV DA		1823-½	200 (200-½)	
LNAV/VNAV DA		2050-¾	427 (500-¾)	
LNAV MDA	2040-½	417 (500-½)	2040-¾	417 (500-¾)
CIRCLING	2100-1 477 (500-1)	2260-1 637 (700-1)	2260-1¾ 637 (700-1¾)	2280-2 657 (700-2)

HIRL Rwy 9-27 and 15-33
REIL Rwy 15, 27 and 33