

(ORSKY3.ORSKY) 23334
ORSKY THREE DEPARTURE

AL-5094 (FAA)

FLYING CLOUD (F'CM)
MINNEAPOLIS, MINNESOTA

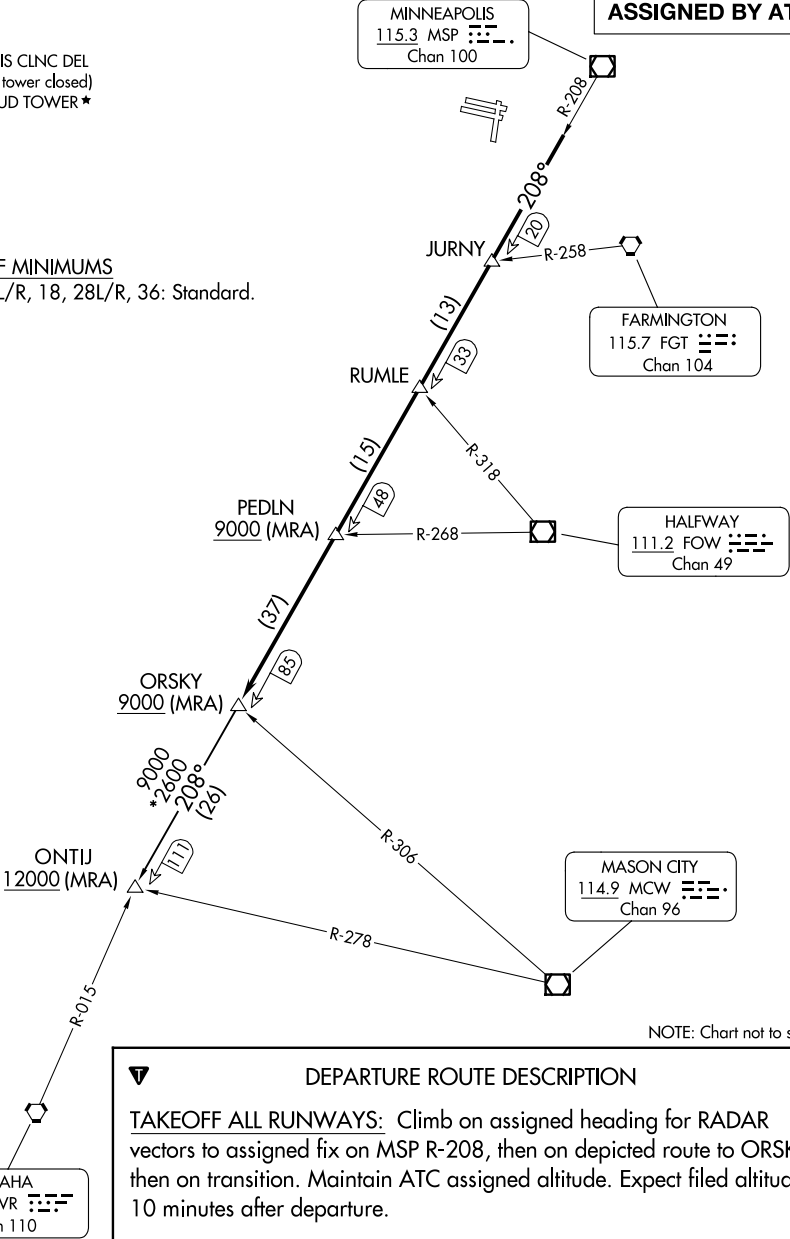
MINNEAPOLIS DEP CON
134.7 284.7
ATIS
124.9
MINNEAPOLIS CLNC DEL
121.7 (when tower closed)
FLYING CLOUD TOWER★
119.15

RADAR required.

TOP ALTITUDE:
ASSIGNED BY ATC

TAKEOFF MINIMUMS

Rwys 10L/R, 18, 28L/R, 36: Standard.



NOTE: Chart not to scale.



DEPARTURE ROUTE DESCRIPTION

TAKEOFF ALL RUNWAYS: Climb on assigned heading for RADAR vectors to assigned fix on MSP R-208, then on depicted route to ORSKY, then on transition. Maintain ATC assigned altitude. Expect filed altitude 10 minutes after departure.

ONTIJ TRANSITION (ORSKY3.ONTIJ): From over ORSKY INT on MSP R-208 to ONTIJ INT.

ORSKY THREE DEPARTURE
(ORSKY3.ORSKY) 08SEP22

MINNEAPOLIS, MINNESOTA
FLYING CLOUD (F'CM)

NC-1, 25 DEC 2025 to 22 JAN 2026

NC-1, 25 DEC 2025 to 22 JAN 2026