

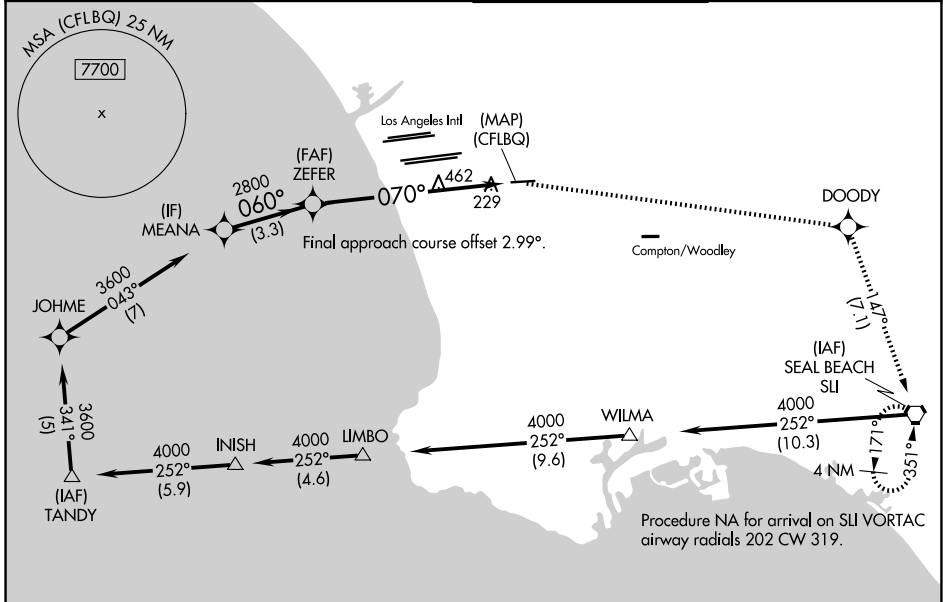
WAAS CH 40344 W07A	APP CRS 070°	Rwy Ldg 3762 TDZE 64 Apt Elev 66
--	------------------------	---

RNAV (GPS) RWY 7

JACK NORTHROP FLD/HAWTHORNE MUNI (HHR)

RNP APCH - GPS.	<p>⚠ Procedure NA at night. Rwy 7 helicopter visibility reduction below 1 SM NA. For uncompensated Baro-VNAV systems, LNAV/VNAV NA below 5°C or above 51°C. Circling NA north of Rwy 7-25.</p>	<p>⚠ MISSED APPROACH: Climb to 4000 direct DOODY and right turn on 147° track to SLI VORTAC and hold, continue climb-in-hold to 4000.</p>
-----------------	---	--

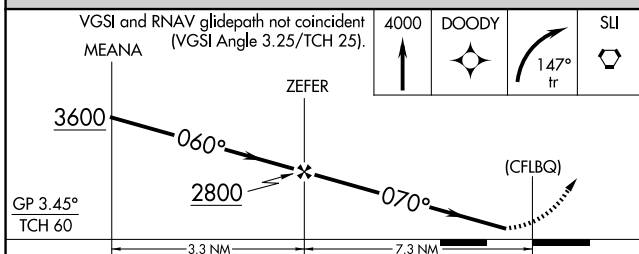
ATIS 118.4	SOCAL APP CON 124.9 269.0	HAWTHORNE TOWER * 121.1(CTAF) 0 257.8	GND CON 125.1
----------------------	-------------------------------------	---	-------------------------



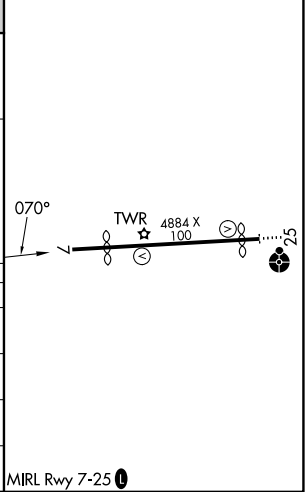
SW-3, 25 DEC 2025 to 22 JAN 2026

SW-3, 25 DEC 2025 to 22 JAN 2026

ELEV 66	D TDZE 64
---------	------------------



CATEGORY	A	B	C	D
LPV DA	342-1		278 (300-1)	
LNAV/VNAV DA	500-1¼		436 (500-1¼)	
LNAV MDA	780-1	716 (800-1)	780-2	716 (800-2)
CIRCLING	780-1	714 (800-1)	780-2	780-2¼
			714 (800-2)	714 (800-2¼)



RNAV (GPS) RWY 7