

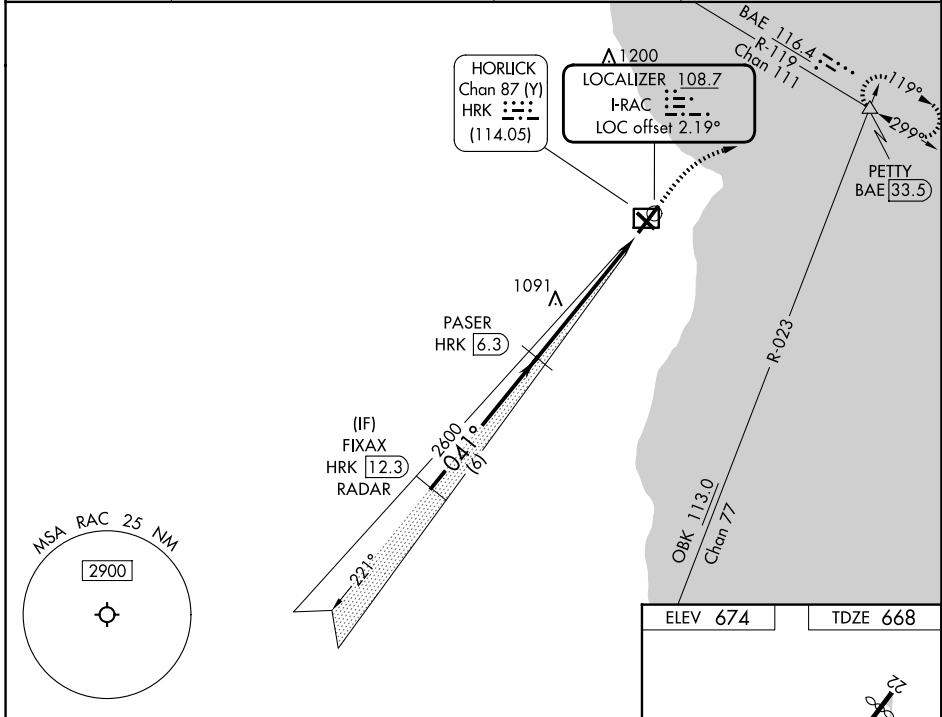
LOC I-RAC 108.7	APP CRS 041°	Rwy Ldg TDZE Apt Elev	5840 668 674
---------------------------	------------------------	-----------------------------	---

ILS or LOC RWY 4

BATTEN INTL (RAC)

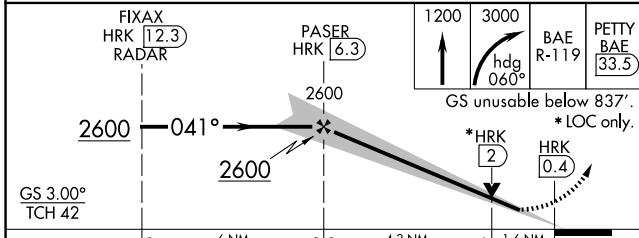
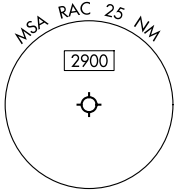
RADAR required for procedure entry. DME required.		MALSF	MISSED APPROACH: Climb to 1200 then climbing right turn to 3000 on heading 060° and BAE VOR/DME R-119 to PETTY BAE 33.5 DME and hold, continue climb-in-hold to 3000.
<p>⚠ Circling Rwy 14 NA at night. Rwy 4 helicopter visibility reduction below ¾ SM NA. Inop table does not apply to S-ILS 4. DME from HRK DME. Simultaneous reception of I-RAC and HRK DME required.</p>			

ASOS 121.425	MILWAUKEE APP CON 135,875 317,725	CLNC DEL 120.15	UNICOM 123.075 (CTAF) 0
------------------------	---	---------------------------	-----------------------------------



EC-3, 25 DEC 2025 to 22 JAN 2026

EC-3, 25 DEC 2025 to 22 JAN 2026



ELEV 674	TDZE 668
REIL Rws 14, 22 and 32 HIRL Rwy 4-22 MIRL Rwy 14-32	
FAF to MAP 5.9 NM	
Knots	60 90 120 150 180
Min:Sec	5:54 3:56 2:57 2:22 1:58

CATEGORY	A	B	C	D
S-ILS 4	923-¾		255 (300-¾)	
S-LOC 4	1220-¾ 552 (600-¾)		1220-1¾ 552 (600-1¾)	
CIRCLING	1220-1 546 (600-1)		1380-2 706 (800-2) 1380-2¼ 706 (800-2¼)	