

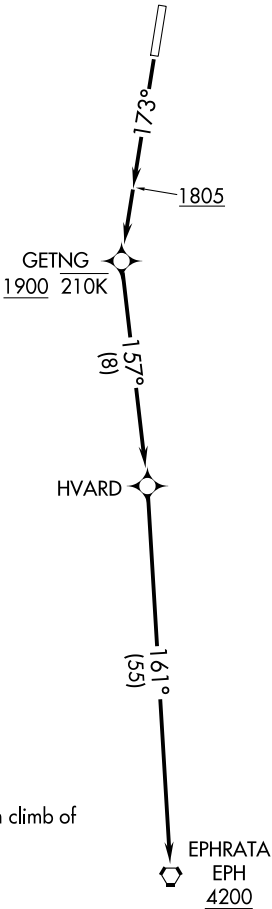
(EPH1.EPH) 21336

EPHRATA ONE DEPARTURE (OBSTACLE) (RNAV)

AL-5453 (FAA)

OMAK (OMK)
OMAK, WASHINGTON

SEATTLE CENTER
126.1 291.6



NOTE: GPS required.
NOTE: RNAV-1.

TAKEOFF MINIMUMS

Rwy 17: Standard with minimum climb of
332' per NM to 4000.
Rwy 35: NA-obstacles.

TAKEOFF OBSTACLE NOTES

Rwy 17: Vehicles on road, vegetation beginning 5' from DER, 452' left of centerline, up to 10' AGL/1306' MSL.
Lighting 40' from DER, 78' right of centerline, 1' AGL/1301' MSL.
Vegetation beginning 50' from DER, 172' right of centerline, up to 1305' MSL.
Vegetation 305' from DER, 499' right of centerline, 5' AGL/1308' MSL.
Vegetation 311' from DER, 529' right of centerline, 9' AGL/1311' MSL.
Pole 1621' from DER, 737' left of centerline, 56' AGL/1339' MSL.
Tree 1972' from DER, 28' left of centerline, 66' AGL/1350' MSL.
Tree 2080' from DER, 78' right of centerline, 68' AGL/1352' MSL.

NOTE: Chart not to scale.

DEPARTURE ROUTE DESCRIPTION

TAKEOFF RUNWAY 17: Climb on heading 173° to 1805, then direct GETNG at or above 1900 at or below 210K, then on depicted route to cross EPH VORTAC at or above 4200, then proceed on course.

EPHRATA ONE DEPARTURE (OBSTACLE) (RNAV)

(EPH1.EPH) 02DEC21

OMAK, WASHINGTON
OMAK (OMK)

NW-1, 25 DEC 2025 to 22 JAN 2026

NW-1, 25 DEC 2025 to 22 JAN 2026