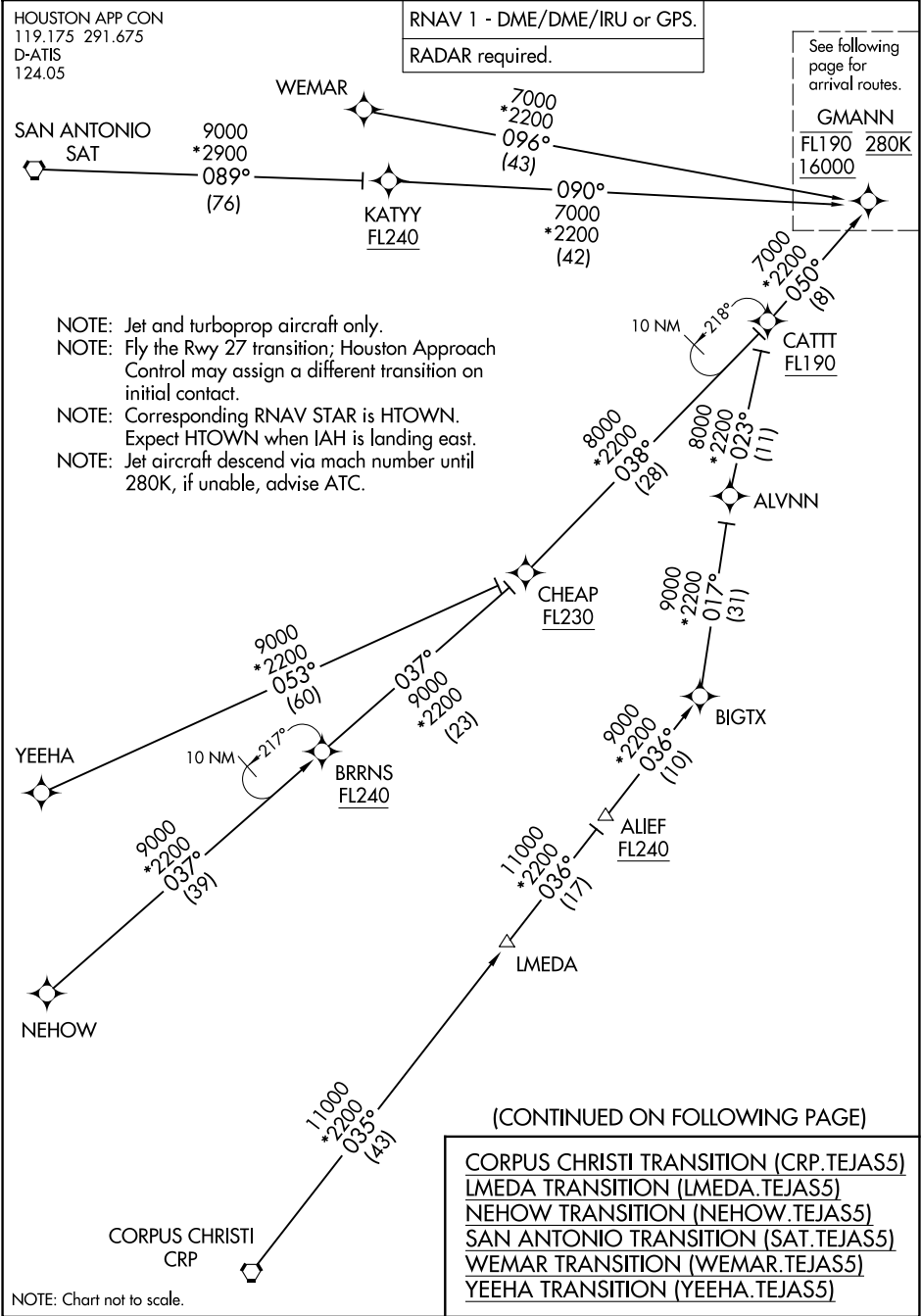


TEJAS FIVE ARRIVAL (RNAV) Transition Routes

HOUSTON, TEXAS



TEJAS FIVE ARRIVAL (RNAV) Transition Routes

HOUSTON, TEXAS

SC-5, 25 DEC 2025 to 22 JAN 2026

SC-5, 25 DEC 2025 to 22 JAN 2026

## ARRIVAL ROUTE DESCRIPTION

From GMANN on track 058° to cross CITTE at or below 16000, then on track 059° to cross TEJAS between 12000 and 14000 and at 250K.

LANDING RUNWAY 26L: From TEJAS on track 059° to cross RIDLR at or below 10000, then on track 059° to cross BEEEP at or below 8000, then on track 059° to cross HOWLN at 6000 and at 240K, then on track 087° to SMOCR, then on track 087° to cross PRAYY at 6000 and at 210K, then on track 087°. Expect RADAR vectors to final approach course.

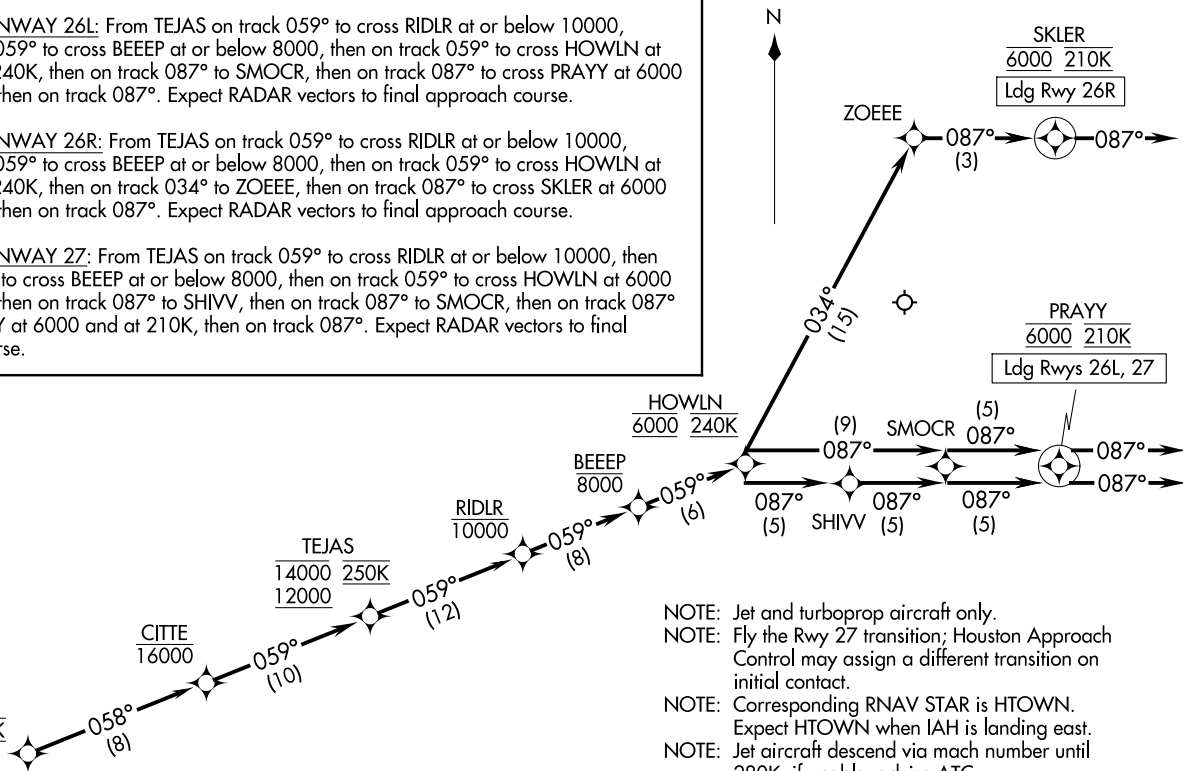
LANDING RUNWAY 26R: From TEJAS on track 059° to cross RIDLR at or below 10000, then on track 059° to cross BEEEP at or below 8000, then on track 059° to cross HOWLN at 6000 and at 240K, then on track 034° to ZOEEE, then on track 087° to cross SKLER at 6000 and at 210K, then on track 087°. Expect RADAR vectors to final approach course.

LANDING RUNWAY 27: From TEJAS on track 059° to cross RIDLR at or below 10000, then on track 059° to cross BEEEP at or below 8000, then on track 059° to cross HOWLN at 6000 and at 240K, then on track 087° to SHIVV, then on track 087° to SMOCR, then on track 087° to cross PRAYY at 6000 and at 210K, then on track 087°. Expect RADAR vectors to final approach course.

RNAV 1 - DME/DME/IRU or GPS.

RADAR required.

HOUSTON APP CON  
119.175 291.675  
D-ATIS  
124.05



- NOTE: Jet and turboprop aircraft only.  
 NOTE: Fly the Rwy 27 transition; Houston Approach Control may assign a different transition on initial contact.  
 NOTE: Corresponding RNAV STAR is HTOWN. Expect HTOWN when IAH is landing east.  
 NOTE: Jet aircraft descend via mach number until 280K, if unable, advise ATC.

NOTE: Chart not to scale.