

Cried One Departure

AL-5537 (FAA)

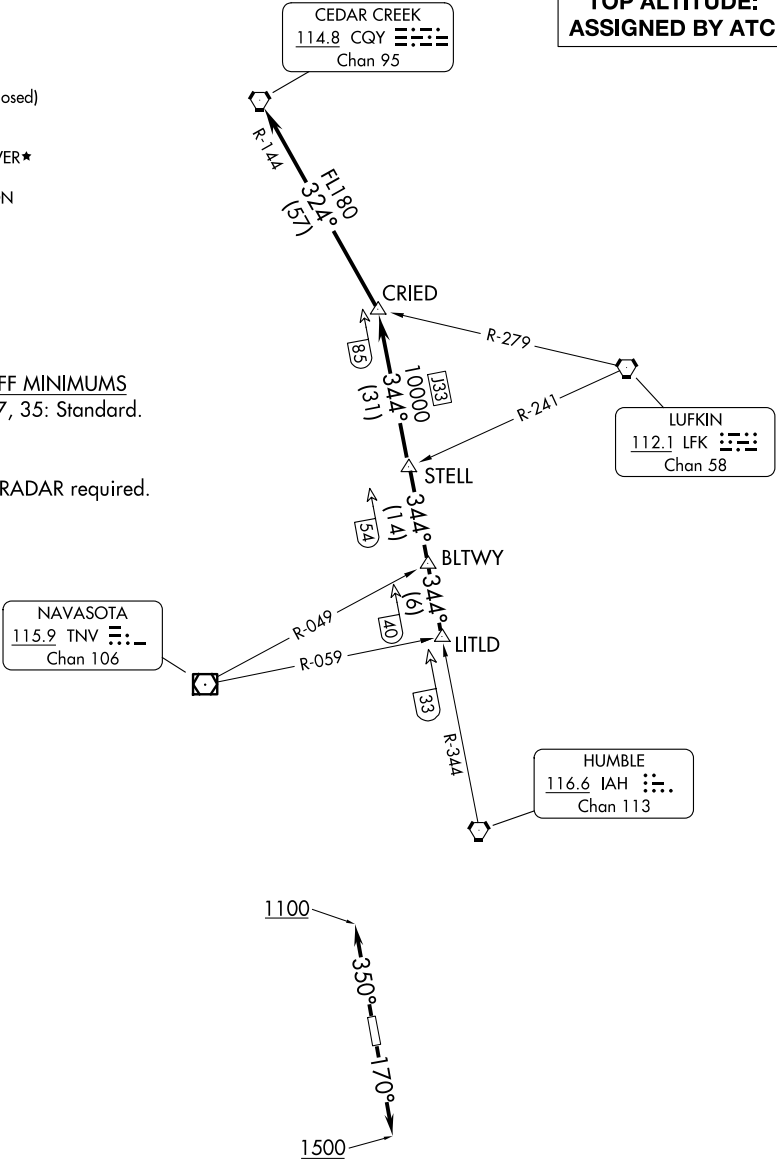
SUGAR LAND RGNL (SGR)
HOUSTON, TEXAS

ATIS
118.125
CLNC DEL
121.4
CLNC DEL
119.25 (when twr closed)
GND CON
121.4
SUGAR LAND TOWER*
118.65 (CTAF)
HOUSTON DEP CON
123.8 257.7

TOP ALTITUDE:
ASSIGNED BY ATC

TAKEOFF MINIMUMS
Rwys 17, 35: Standard.

NOTE: RADAR required.



(CONTINUED ON FOLLOWING PAGE)

NOTE: Chart not to scale.

Cried One Departure



DEPARTURE ROUTE DESCRIPTION

TAKEOFF RUNWAY 17: Climb on heading 170° to 1500 before turning. When entering controlled airspace, climb on assigned heading for RADAR vectors to LITLD INT. Maintain ATC assigned altitude. Expect filed altitude 10 minutes after departure, thence . . .

TAKEOFF RUNWAY 35: Climb on heading 350° to 1100 before turning. When entering controlled airspace, climb on assigned heading for RADAR vectors to LITLD INT. Maintain ATC assigned altitude. Expect filed altitude 10 minutes after departure, thence . . .

. . . on IAH R-344 to STELL INT, then on IAH R-344 to CRIED INT, then left turn on CQY R-144 to CQY VORTAC.

SC-5, 25 DEC 2025 to 22 JAN 2026

SC-5, 25 DEC 2025 to 22 JAN 2026