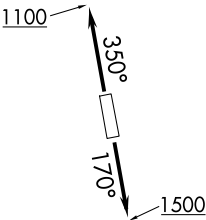
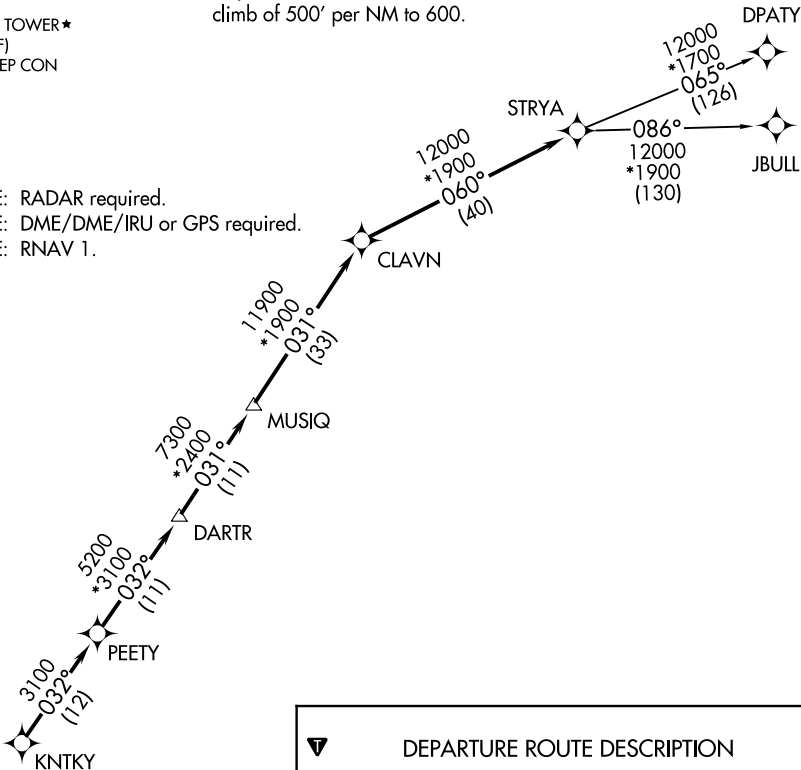


ATIS
118.125
CLNC DEL
121.4
CLNC DEL
119.25 (when twr closed)
GND CON
121.4
SUGARLAND TOWER★
118.65 (CTAF)
HOUSTON DEP CON
123.8 257.7

TOP ALTITUDE: ASSIGNED BY ATC

TAKEOFF MINIMUMS
Rwys 17, 35: Standard with minimum
climb of 500' per NM to 600.

NOTE: RADAR required.
NOTE: DME/DME/IRU or GPS required.
NOTE: RNAV 1.



NOTE: Chart not to scale.



DEPARTURE ROUTE DESCRIPTION

TAKEOFF RUNWAY 17: Climb on heading 170° to 1500 for RADAR vectors to KNTKY, thence. . .
TAKEOFF RUNWAY 35: Climb on heading 350° to 1100 for RADAR vectors to KNTKY, thence. . .

. . . on track 032° to PEETY, then on track 032° to DARTR, then on track 031° to MUSIQ, then on track 031° to CLAVN, then on track 060° to STRYA, then on (transition). Maintain ATC assigned altitude. Expect filed altitude 10 minutes after departure.

DPATY TRANSITION (STRYA8.DPATY)
JBULL TRANSITION (STRYA8.JBULL)