

WAAS CH <b>49032</b> <b>W14A</b>	APP CRS <b>142°</b>	Rwy Idg TDZE Apt Elev	<b>4899</b> <b>1132</b> <b>1136</b>
--	------------------------	-----------------------------	---

# RNAV (GPS) RWY 14

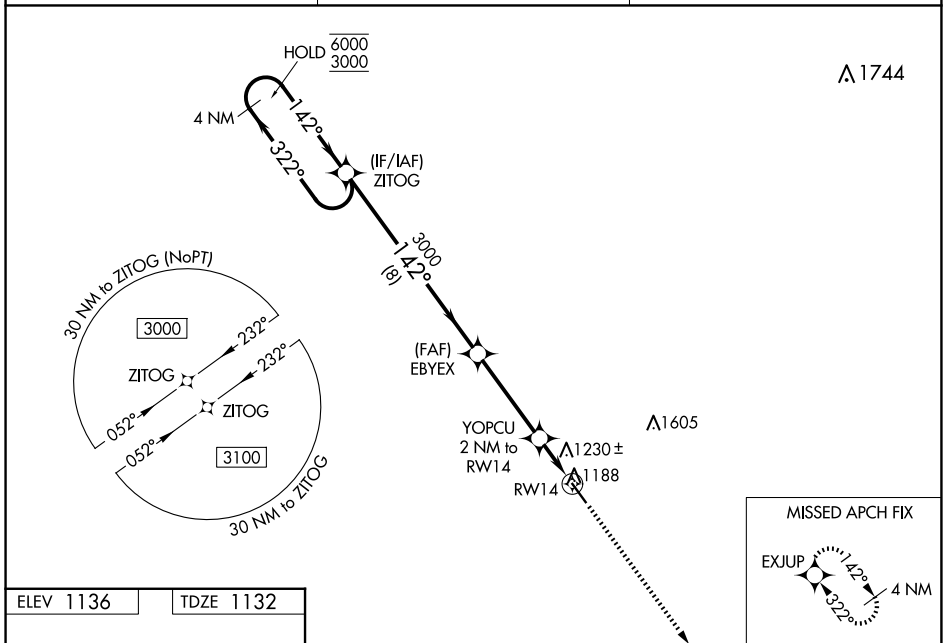
MORRIS MUNI/CHARLIE SCHMIDT FLD (MOX)

RNP APCH-GPS.

Baro-VNAV and VDP NA when using BBB altimeter setting. For uncompensated Baro-VNAV systems, LNAV/VNAV NA below -17°C or above 54°C. When local altimeter setting not received, use BBB altimeter setting and increase LPV and LNAV/VNAV DA to 1440 feet. Increase all MDAs 60 feet and visibility LNAV Cat C 1/8 SM and visibility Circling Cat C 1/4 SM.

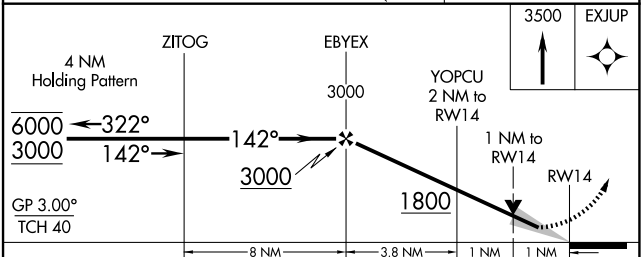
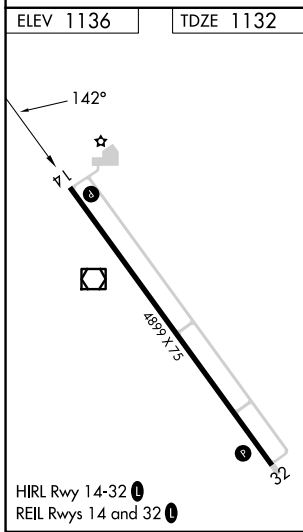
MISSED APPROACH: Climb to 3500 direct EXJUP and hold.

AWOS-3PT <b>118.6</b>	MINNEAPOLIS CENTER <b>126.1 269.2</b>	UNICOM <b>122.8 (CTAF) 0</b>
--------------------------	--	---------------------------------



NC-1, 25 DEC 2025 to 22 JAN 2026

NC-1, 25 DEC 2025 to 22 JAN 2026



CATEGORY	A	B	C	D
LPV DA		1382-1 250 (300-1)		NA
LNAV/VNAV DA		1382-1 250 (300-1)		NA
LNAV MDA		1480-1 348 (400-1)		NA
<input checked="" type="checkbox"/> CIRCLING	1560-1 424 (500-1)	1600-1 464 (500-1)	1860-2 724 (800-2)	NA