

WAAS CH <b>56604</b> <b>W18A</b>	APP CRS <b>188°</b>	Rwy Idg TDZE Apt Elev	<b>4999</b> <b>226</b> <b>226</b>
--	------------------------	-----------------------------	---

# RNAV (GPS) RWY 18

MONROE COUNTY (M40)

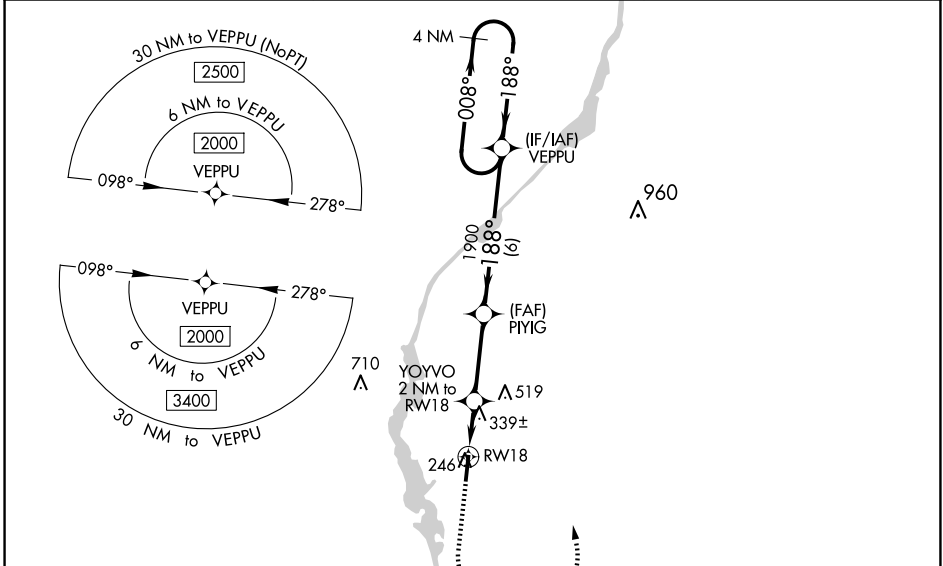
RNP APCH.

▼

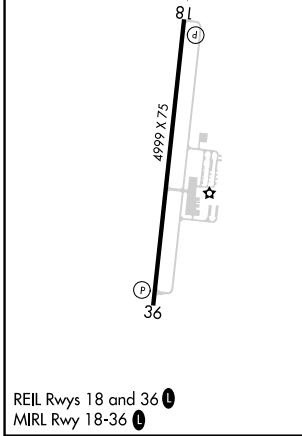
For uncompensated Baro-VNAV systems, LNAV/VNAV NA below -15°C or above 54°C.

MISSED APPROACH: Climb to 800 then climbing left turn to 2000 direct VEPPU and hold.

AWOS-3P <b>118.475</b>	COLUMBUS APP CON ★ <b>126.075 239.25</b>	UNICOM <b>122.8 (CTAF) 0</b>
---------------------------	---	---------------------------------



ELEV 226	TDZE 226
----------	----------



800	2000	VEPPU	VGSi and RNAV glidepath not coincident (VGSi Angle 3.00/TCH 40).	
*LNAV only.		YOYVO 2 NM to RW18	PIYIG 1900	VEPPU 4 NM Holding Pattern
*1.1 NM to RW18		*900		GP 3.00° TCH 40
1.1 NM		0.9	3.1 NM	6 NM
CATEGORY	A	B	C	D
LPV DA		476-3/4	250 (300-3/4)	
LNAV/VNAV DA		504-7/8	278 (300-7/8)	
LNAV MDA		600-1	374 (400-1)	
CIRCLING	660-1	680-1	820-1 1/2	860-2
	434 (500-1)	454 (500-1)	594 (600-1 1/2)	634 (700-2)

SC-4, 25 DEC 2025 to 22 JAN 2026

SC-4, 25 DEC 2025 to 22 JAN 2026