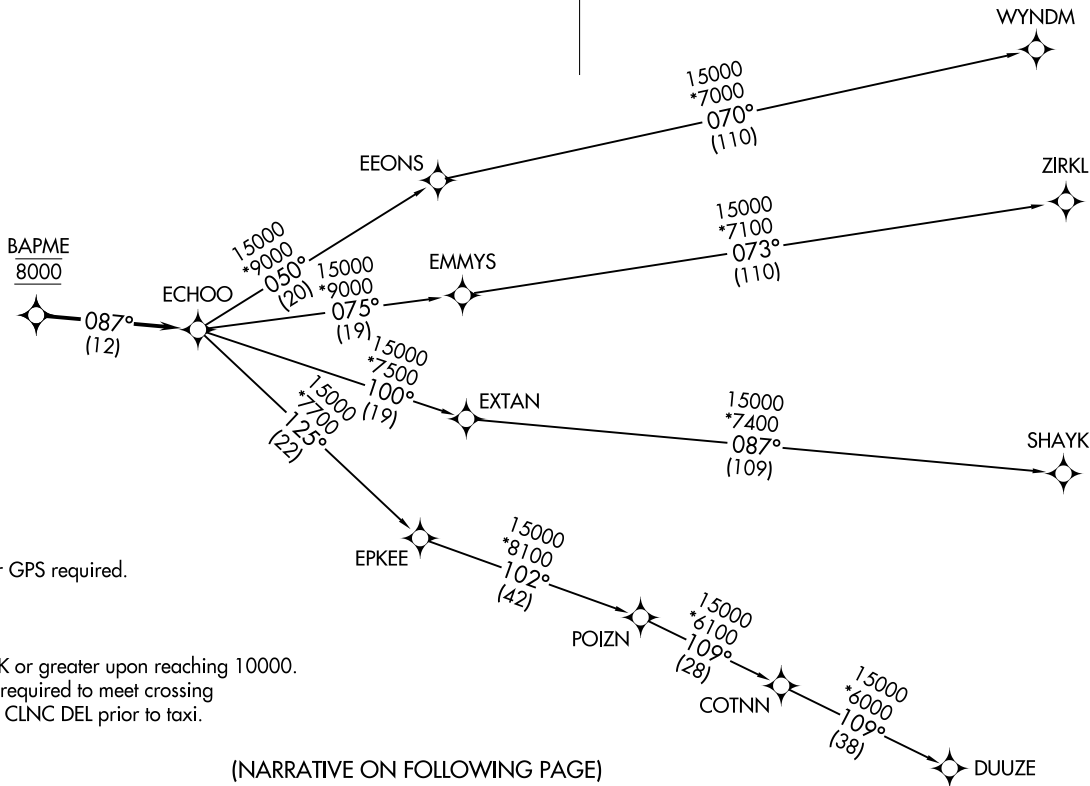


CLNC DEL
120.25
DENVER DEP CON
134.85 251.125



TOP ALTITUDE:
FL230



TAKEOFF MINIMUMS

Rwys 6, 24: NA.
Rwys 15, 33: Standard.

NOTE: DME/DME/IRU or GPS required.
NOTE: RNAV 1.
NOTE: Turbojets only.
NOTE: RADAR required.
NOTE: Accelerate to 250K or greater upon reaching 10000.
If slower speed is required to meet crossing
restrictions advise CLNC DEL prior to taxi.

NOTE: Chart not to scale.

(NARRATIVE ON FOLLOWING PAGE)



DEPARTURE ROUTE DESCRIPTION

TAKEOFF RUNWAY 15: Climb on a heading between 350° CW 180° as assigned by ATC. Thence. . . .

TAKEOFF RUNWAY 33: Climbing right turn on a heading between 350° CW 150° as assigned by ATC. Thence. . . .

. . . .expect RADAR vectors to cross BAPME at 8000 then on track 087° to ECHOO, then on (transition) maintain FL230 or filed lower altitude. Expect higher filed altitude ten minutes after departure.

- DUUZE TRANSITION (ECHOO1.DUUZE)
- SHAYK TRANSITION (ECHOO1.SHAYK)
- WYNDM TRANSITION (ECHOO1.WYNDM)
- ZIRKL TRANSITION (ECHOO1.ZIRKL)

SW-1, 25 DEC 2025 to 22 JAN 2026

SW-1, 25 DEC 2025 to 22 JAN 2026