

SC-2, 25 DEC 2025 to 22 JAN 2026

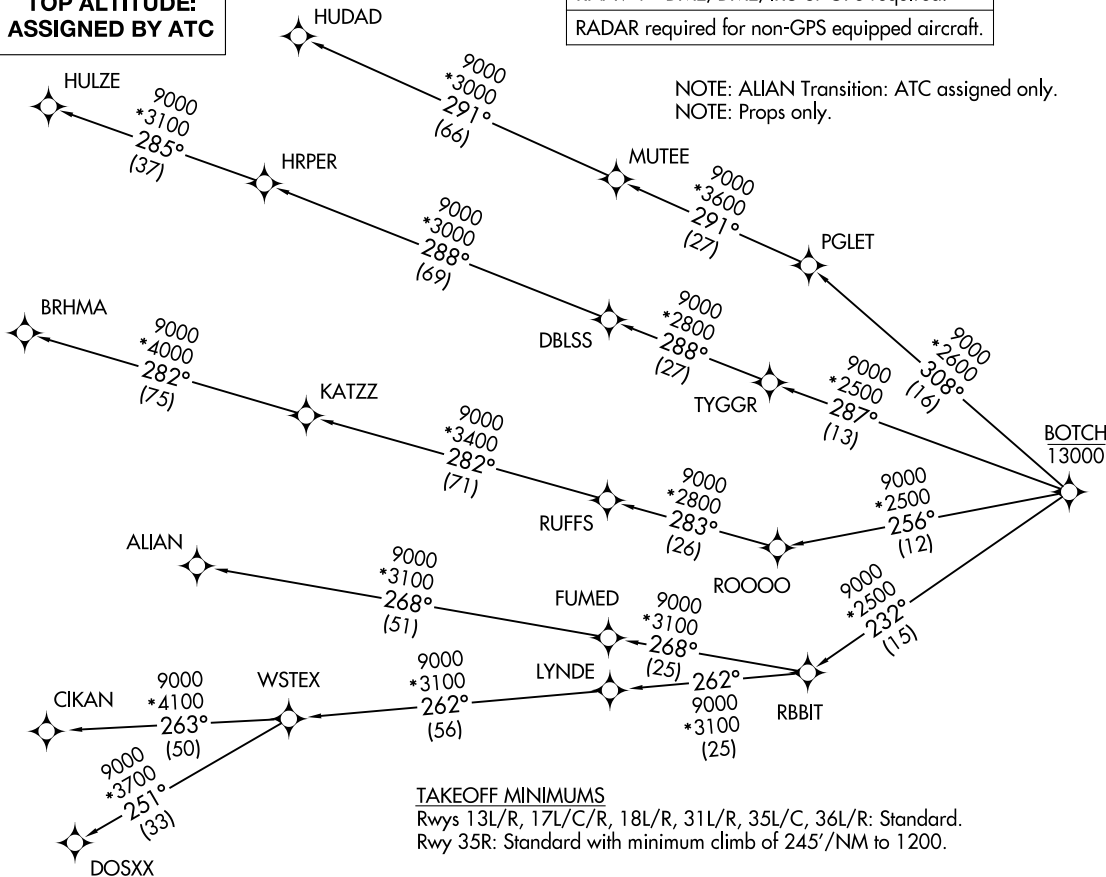
SC-2, 25 DEC 2025 to 22 JAN 2026

BOITCH ONE DEPARTURE (RNAV) Transition Routes  
(BOITCH) .BOITCH 17ZAPR25

**TOP ALTITUDE:  
ASSIGNED BY ATC**

RNAV 1 - DME/DME/IRU or GPS required.  
RADAR required for non-GPS equipped aircraft.

LONE STAR DEP CON  
135.975 379.9  
(Rwys 13L/R, 17L/C/R, 18L/R)  
118.1 306.95  
(Rwys 31L/R, 35L/C/R, 36L/R)  
D-ATIS DEP  
135.925  
CLNC DEL  
128.25  
CPDLC  
GND CON  
121.65 121.8 (EAST)  
121.85 (WEST)  
DFW TOWER  
126.55 127.5 (EAST)  
124.15 134.9 (WEST)



(CONTINUED ON FOLLOWING PAGE)



(BOITCH) .BOITCH 25107  
AL-6039 (FAA)  
DALLAS-FORT WORTH INTL (DFW)  
DALLAS-FORT WORTH, TEXAS



DEPARTURE ROUTE DESCRIPTION

TAKEOFF RUNWAY 13L: Climb on heading 131° to 1106, then on heading 242° or as assigned by ATC, for vectors to cross DEMII at or above 5000, thence. . .

TAKEOFF RUNWAY 13R: Climb on heading 135° to 1106, then on heading 236° or as assigned by ATC, for vectors to cross DEMII at or above 5000, thence. . .

TAKEOFF RUNWAY 17L: Climb on heading 176° to 1106, then on heading 246° or as assigned by ATC, for vectors to cross DEMII at or above 5000, thence. . .

TAKEOFF RUNWAYS 17C/R: Climb on heading 176° to 1106, then on heading 243° or as assigned by ATC, for vectors to cross DEMII at or above 5000, thence. . .

TAKEOFF RUNWAY 18L: Climb on heading 176° to 1106, then on heading 241° or as assigned by ATC, for vectors to cross DEMII at or above 5000, thence. . .

TAKEOFF RUNWAY 18R: Climb on heading 176° to 1106, then on heading 240° or as assigned by ATC, for vectors to cross DEMII at or above 5000, thence. . .

TAKEOFF RUNWAY 31L: Climb on heading 315° to 1106, then on heading 227° or as assigned by ATC, for vectors to cross DEMII at or above 5000, thence. . .

TAKEOFF RUNWAY 31R: Climb on heading 311° to 1106, then on heading 235° or as assigned by ATC, for vectors to cross DEMII at or above 5000, thence. . .

TAKEOFF RUNWAY 35L: Climb on heading 356° to 1106, then on heading 233° or as assigned by ATC, for vectors to cross DEMII at or above 5000, thence. . .

TAKEOFF RUNWAY 35C: Climb on heading 356° to 1106, then on heading 234° or as assigned by ATC, for vectors to cross DEMII at or above 5000, thence. . .

TAKEOFF RUNWAY 35R: Climb on heading 356° to 1200, then on heading 240° or as assigned by ATC, for vectors to cross DEMII at or above 5000, thence. . .

TAKEOFF RUNWAYS 36L/R: Climb on heading 356° to 1106, then on heading 230° or as assigned by ATC, for vectors to cross DEMII at or above 5000, thence. . .

. . .on track 270° to cross BOTCH at or below 13000, then on (transition). Maintain ATC assigned altitude, expect filed altitude 10 minutes after departure.

- ALIAN TRANSITION (BOTCH1.ALIAN)
- BRHMA TRANSITION (BOTCH1.BRHMA)
- CIKAN TRANSITION (BOTCH1.CIKAN)
- DOSXX TRANSITION (BOTCH1.DOSXX)
- HUDAD TRANSITION (BOTCH1.HUDAD)
- HULZE TRANSITION (BOTCH1.HULZE)
- WSTEX TRANSITION (BOTCH1.WSTEX)