

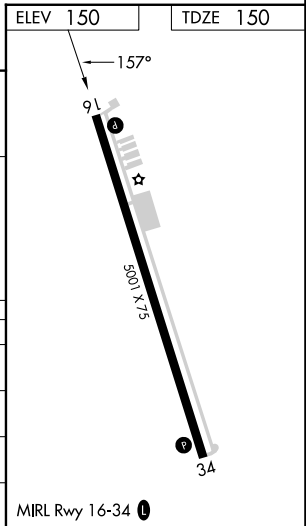
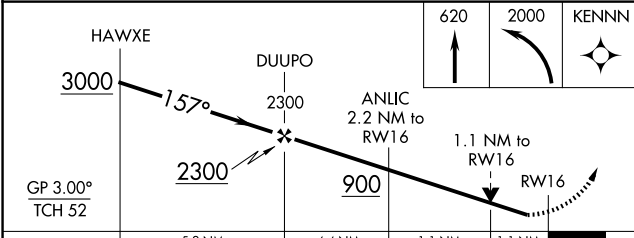
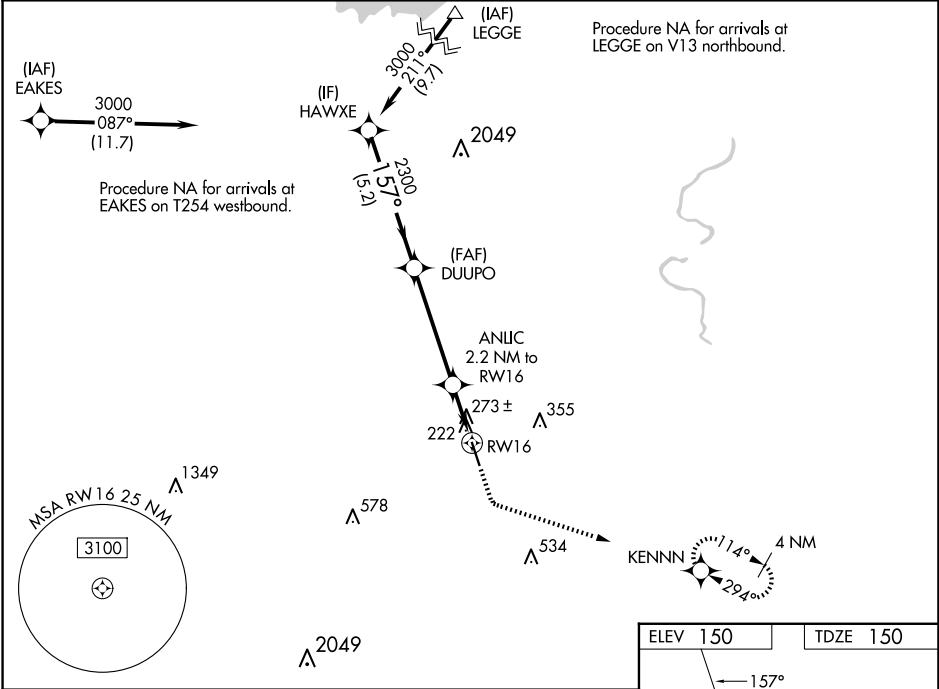
WAAS CH <b>65724</b> <b>W16A</b>	APP CRS <b>157°</b>	Rwy Idg TDZE <b>150</b> Apt Elev <b>150</b>	<b>5001</b>
--	------------------------	---	-------------

# RNAV (GPS) RWY 16

CLEVELAND MUNI (6R:3)

RNP APCH-GPS.		MISSED APPROACH: Climb to 620 then climbing left turn to 2000 direct KENNN and hold.
▼ Rwy 16 helicopter visibility reduction below 3/4 SM NA. For uncompensated Baro-VNAV systems, LNAV/VNAV NA below -15°C or above 54°C. Circling Rwy 34 NA at night.		

AWOS-3 <b>119.325</b>	HOUSTON APP CON <b>119.7 281.4</b>	UNICOM <b>123.0 (CTAF) 0</b>
--------------------------	---------------------------------------	---------------------------------



CATEGORY	A	B	C	D
LPV DA	400-3/4 250 (300-3/4)			NA
LNAV/VNAV DA	538-1 1/8 388 (400-1 1/8)			NA
LNAV MDA	540-1	390 (400-1)	540-1 1/8 390 (400-1 1/8)	NA
CIRCLING	600-1	450 (500-1)	660-1 1/2 510 (600-1 1/2)	NA

SC-5, 25 DEC 2025 to 22 JAN 2026

SC-5, 25 DEC 2025 to 22 JAN 2026