

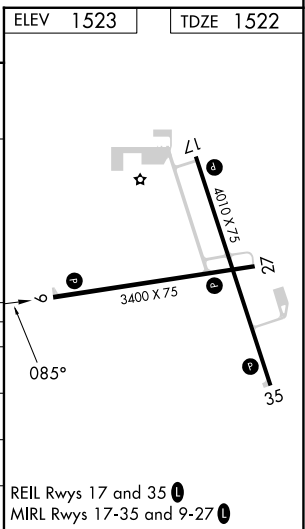
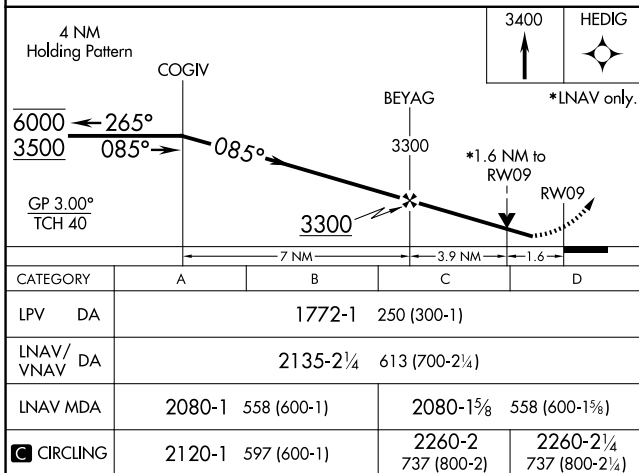
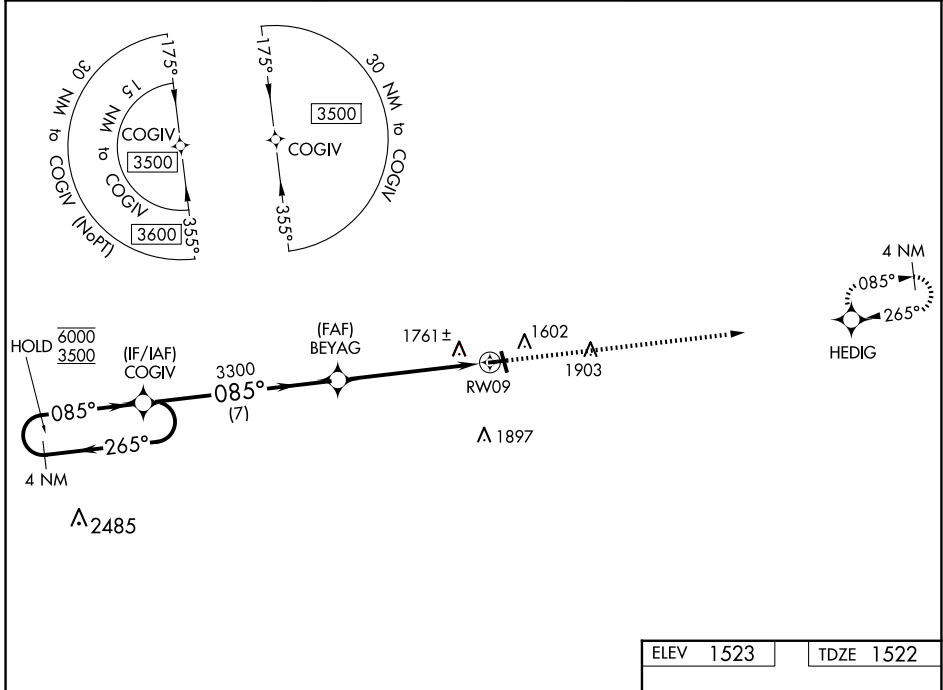
WAAS CH 82130 W09A	APP CRS 085°	Rwy Idg 3400 TDZE 1522 Apt Elev 1523
--	------------------------	---

RNAV (GPS) RWY 9

LANGLADE COUNTY (AIG)

RNP APCH.	MISSED APPROACH: Climb to 3400 direct HEDIG and hold.
▽ Rwy 9 helicopter visibility reduction below 3/4 SM NA. ▲ For uncompensated Baro-VNAV systems, LNAV/VNAV NA below -18C or above 54°C.	

AWOS-3 119.075	MINNEAPOLIS CENTER 124.4 317.7	UNICOM 122.8 (CTAF) 0
--------------------------	--	---------------------------------



EC-3, 25 DEC 2025 to 22 JAN 2026

EC-3, 25 DEC 2025 to 22 JAN 2026