

|  |                        |                             |   |
|--|------------------------|-----------------------------|---|
| WAAS<br>CH <b>49202</b><br><b>W36A</b> | APP CRS<br><b>359°</b> | Rwy Ldg<br>TDZE<br>Apt Elev | <b>7002</b><br><b>589</b><br><b>589</b> |
|--|------------------------|-----------------------------|---|

# RNAV (GPS) RWY 36

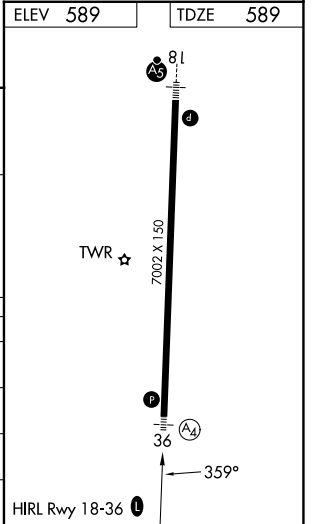
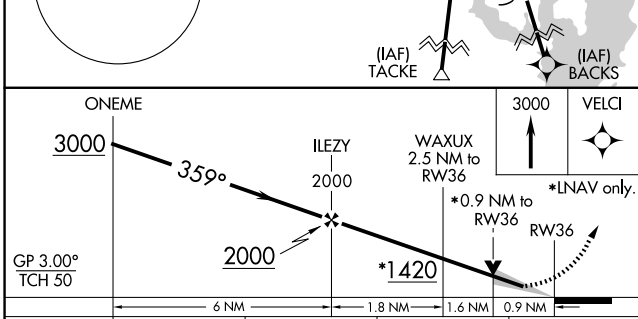
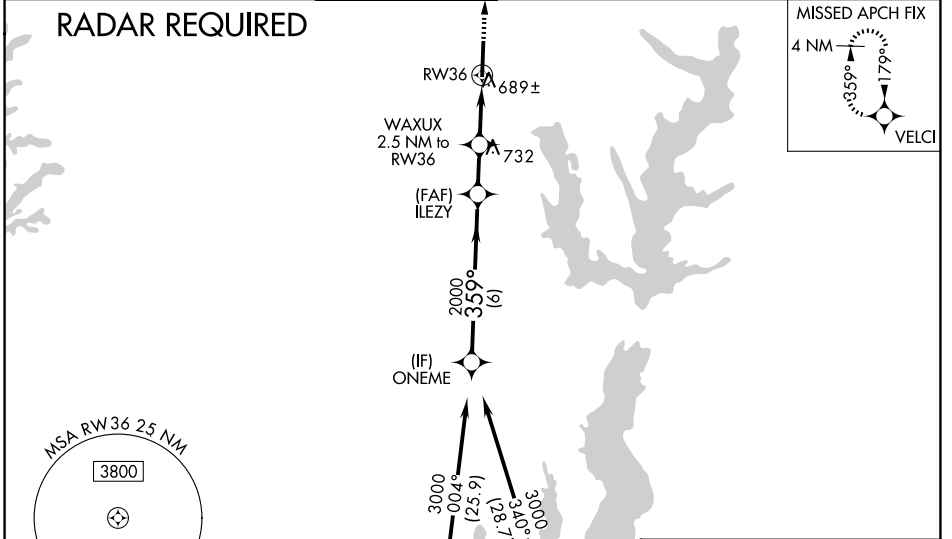
MCKINNEY NTL (TKI)

**⚠** For uncompensated Baro-VNAV systems, LNAV/VNAV NA below -8°C (18°F) or above 54°C (130°F). When local altimeter setting not received, use Dallas Love Fld altimeter setting and increase all DA 70 feet and all MDA 80 feet, and increase LNAV/VNAV all Cats visibility 1/8 mile, LNAV Cat C/D and Circling Cat C/D visibility 1/4 mile. DME/DME RNP-0.3 NA. VDP and Baro-VNAV NA when using Dallas Love Fld altimeter setting. For inop MALS increase LNAV/VNAV all Cats visibility to 3/8 mile and LNAV Cat D visibility to 1 mile. For inop MALS when using Dallas Love Fld altimeter setting increase LPV all Cats visibility to 3/8 mile, LNAV/VNAV Cat D visibility to 1 1/8 mile, and LNAV Cat D visibility to 1 1/4 mile. Inop table does not apply to LPV all Cats.

MALS  
Ⓜ<sub>4</sub> =

MISSED APPROACH:  
Climb to 3000 direct VELCI and hold.

|                        |   |  |                           |  |                         |
|------------------------|---|--|---------------------------|--|-------------------------|
| ATIS<br><b>119.925</b> | LONE STAR APP CON<br><b>124.3 282.275</b> | MCKINNEY TOWER ★<br><b>118.825</b> (CTAF) <b>0</b> | GND CON<br><b>121.875</b> | CLNC DEL<br><b>121.35</b><br>(When twr closed) | UNICOM<br><b>122.95</b> |
|------------------------|---|--|---------------------------|--|-------------------------|



| CATEGORY     | A      | B           | C                             | D                             |
|--------------|--------|-------------|-------------------------------|-------------------------------|
| LPV DA       |        | 789-3/4     | 200 (200-3/4)                 |                               |
| LNAV/VNAV DA |        | 850-3/4     | 261 (300-3/4)                 |                               |
| LNAV MDA     |        | 940-3/4     | 351 (400-3/4)                 |                               |
| CIRCLING     | 1120-1 | 531 (600-1) | 1200-1 1/4<br>611 (700-1 1/4) | 1380-2 1/2<br>791 (800-2 1/2) |