

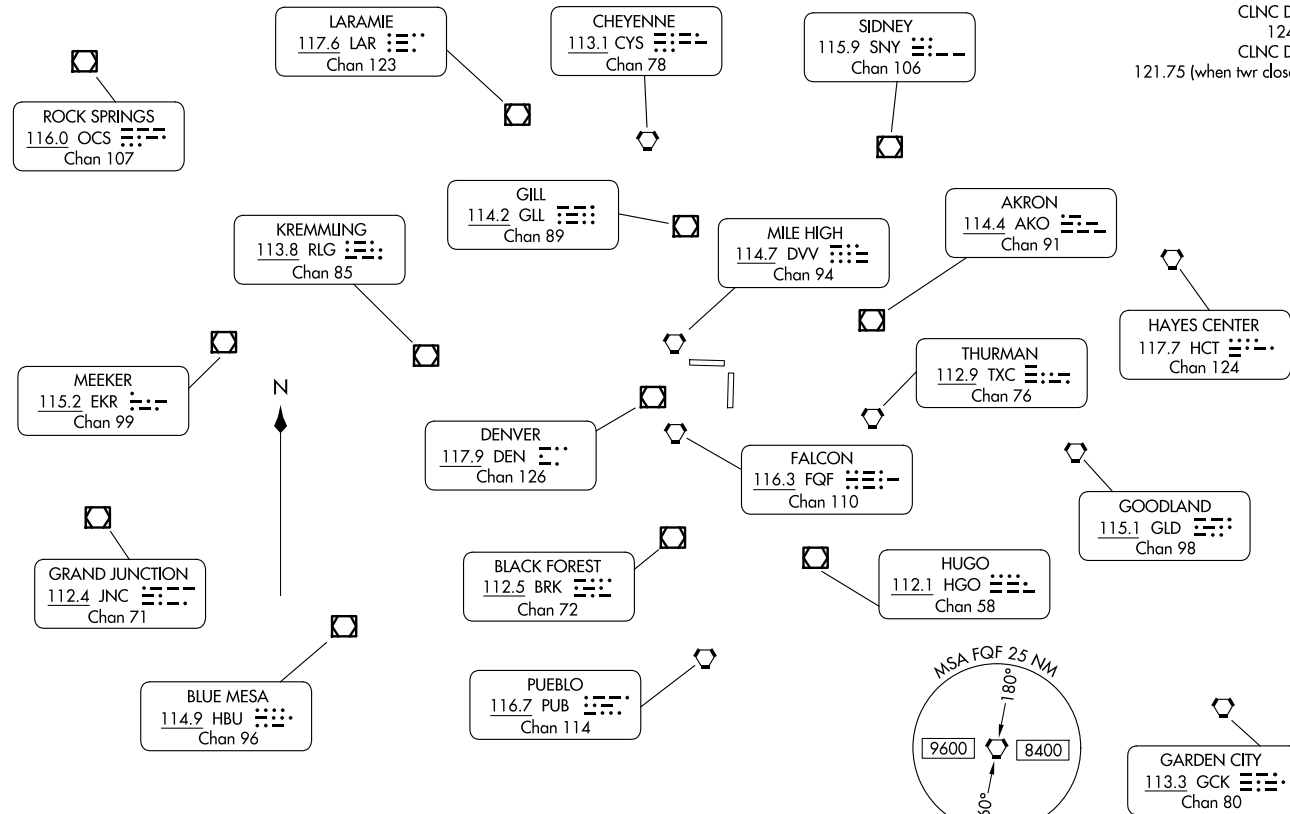
TAKEOFF MINIMUMS

All runways: Standard.

TOP ALTITUDE: ASSIGNED BY ATC.

RADAR required.

DENVER DEP CON
128.25 371.95
ATIS
119.025
CLNC DEL
124.7
CLNC DEL
121.75 (when twr closed)



NOTE: Chart not to scale.

(CONTINUED ON FOLLOWING PAGE)

DENVER THREE DEPARTURE
12 JUN 25

DENVER, COLORADO
COLORADO AIR AND SPACE PORT (CFO)

25133
DENVER THREE DEPARTURE

AL-6851 (FAA)

DENVER, COLORADO
COLORADO AIR AND SPACE PORT (CFO)



DEPARTURE ROUTE DESCRIPTION

TAKEOFF ALL RUNWAYS: Fly assigned heading and altitude for RADAR vectors to assigned route. Expect filed altitude 10 minutes after departure.

LOST COMMUNICATIONS: If no transmissions are received within one minute after departure, maintain assigned heading until 7000, then climb to filed altitude direct to DEN VOR/DME, then on assigned route. If filed altitude is above 10000, cross DEN VOR/DME at or above 11000.

SW-1, 25 DEC 2025 to 22 JAN 2026

SW-1, 25 DEC 2025 to 22 JAN 2026