

WAAS CH <b>69641</b> <b>W02A</b>	APP CRS <b>023°</b>	Rwy Ldg TDZE Apt Elev	<b>5121</b> <b>1936</b> <b>1978</b>
--	------------------------	-----------------------------	---

# RNAV (GPS) RWY 2

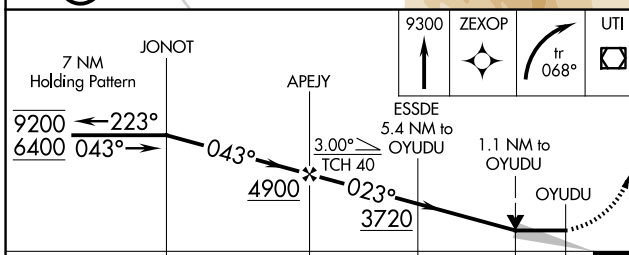
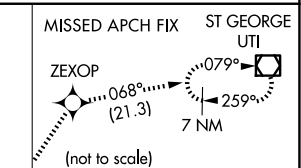
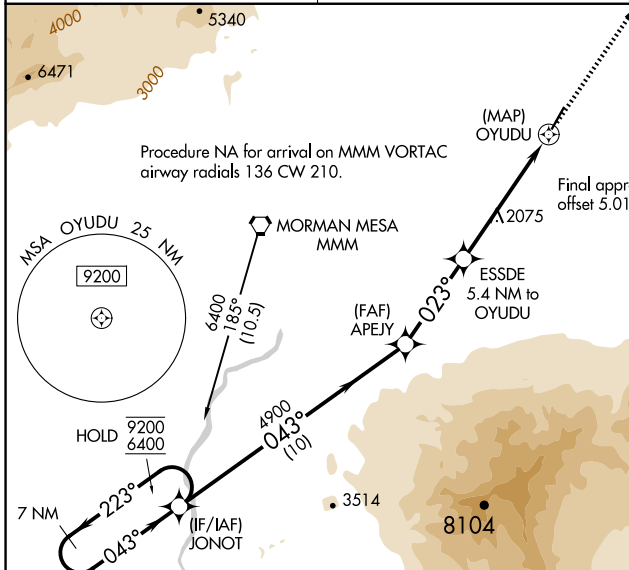
MESQUITE (67L)

RNP APCH.

**NA** VDP NA when using St George altimeter setting. When local altimeter setting not received, use St. George altimeter setting and increase all MDAs 200 feet and LP\* and LNAV\* Cats C/D visibility  $\frac{1}{2}$  SM. Circling NA for Cat D west of Rwy 2-20. Circling Rwy 20 NA at night.

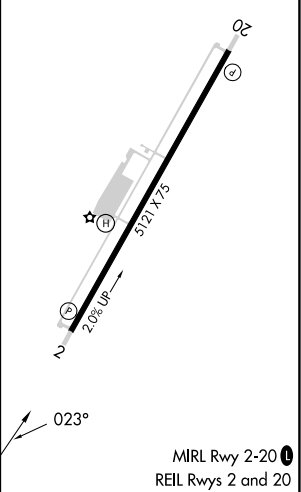
**MISSED APPROACH:** Climb to 9300 direct ZEXOP and climbing right turn on track 068° to UTI VOR/DME and hold, continue climb-in-hold to 9300.  
\*Missed approach requires minimum climb of 258 feet per NM to 6200.

AWOS-2 <b>118.525</b>	LOS ANGELES CENTER <b>124.2 343.6</b>	UNICOM <b>122.8 (CTAF)</b>
--------------------------	--	-------------------------------



ELEV 1978	TDZE 1936
-----------	-----------

CATEGORY	A	B	C	D
LP MDA*	2340-1	404 (400-1)	2340-1 $\frac{1}{8}$	404 (400-1 $\frac{1}{8}$ )
LP MDA	3080-1 $\frac{1}{4}$ 1144 (1200-1 $\frac{1}{4}$ )	3080-1 $\frac{1}{2}$ 1144 (1200-1 $\frac{1}{2}$ )	3080-3	1144 (1200-3)
LNAV MDA*	2340-1	404 (400-1)	2340-1 $\frac{1}{8}$	404 (400-1 $\frac{1}{8}$ )
LNAV MDA	3140-1 $\frac{1}{4}$ 1204 (1200-1 $\frac{1}{4}$ )	3140-1 $\frac{1}{2}$ 1204 (1200-1 $\frac{1}{2}$ )	3140-3	1204 (1200-3)
<b>CIRCLING</b>	3140-1 $\frac{1}{4}$ 1162 (1200-1 $\frac{1}{4}$ )	3140-1 $\frac{1}{2}$ 1162 (1200-1 $\frac{1}{2}$ )	3140-3	1162 (1200-3)



SW-4, 25 DEC 2025 to 22 JAN 2026

SW-4, 25 DEC 2025 to 22 JAN 2026