

DENVER DEP CON  
125.12 263.02

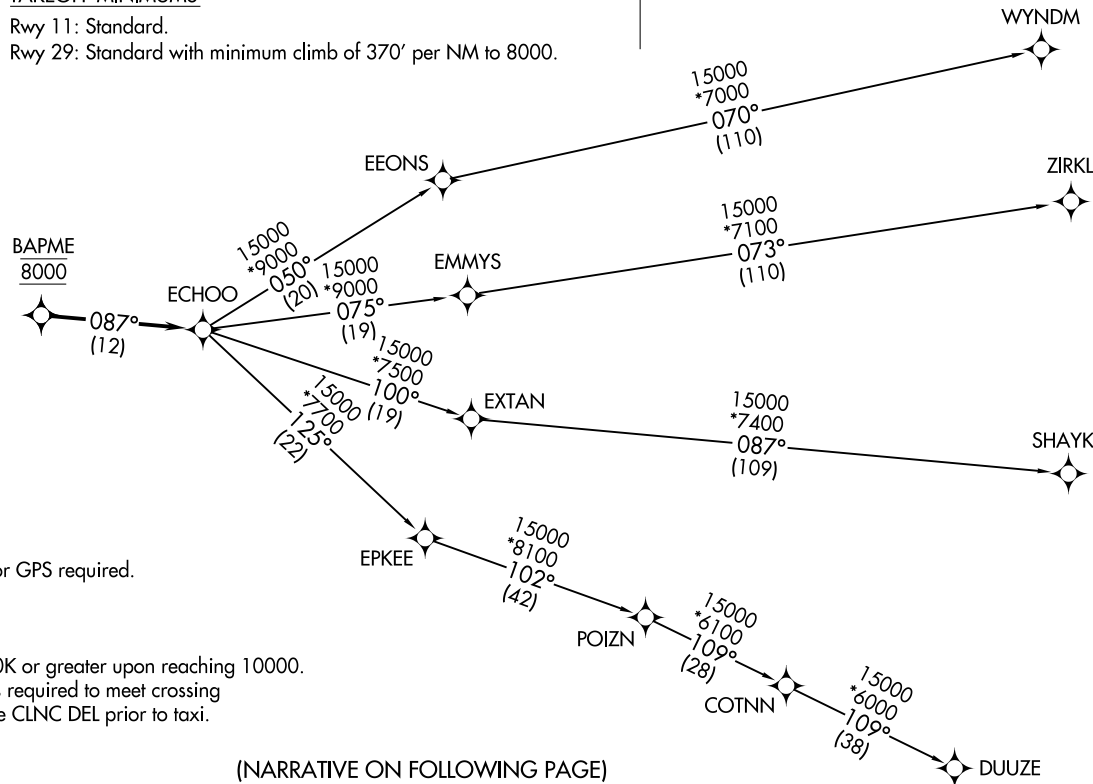


TOP ALTITUDE:  
FL230

TAKEOFF MINIMUMS

Rwy 11: Standard.

Rwy 29: Standard with minimum climb of 370' per NM to 8000.



- NOTE: DME/DME/IRU or GPS required.
- NOTE: RNAV 1.
- NOTE: Turbojets only.
- NOTE: RADAR required.
- NOTE: Accelerate to 250K or greater upon reaching 10000.  
If slower speed is required to meet crossing restrictions advise CLNC DEL prior to taxi.

NOTE: Chart not to scale.

(NARRATIVE ON FOLLOWING PAGE)



DEPARTURE ROUTE DESCRIPTION

TAKEOFF RUNWAY 11: Climb on a heading between 030° CW 160° as assigned by ATC. Thence. . . .

TAKEOFF RUNWAY 29: Climbing right turn on a heading between 030° CW 110° as assigned by ATC. Thence. . . .

. . . .expect RADAR vectors to cross BAPME at 8000 then on track 087° to ECHOO, then on (transition) maintain FL230 or filed lower altitude. Expect higher filed altitude ten minutes after departure.

- DUUZE TRANSITION (ECHOO1.DUUZE)
- SHAYK TRANSITION (ECHOO1.SHAYK)
- WYNDM TRANSITION (ECHOO1.WYNDM)
- ZIRKL TRANSITION (ECHOO1.ZIRKL)

SW-1, 25 DEC 2025 to 22 JAN 2026

SW-1, 25 DEC 2025 to 22 JAN 2026