

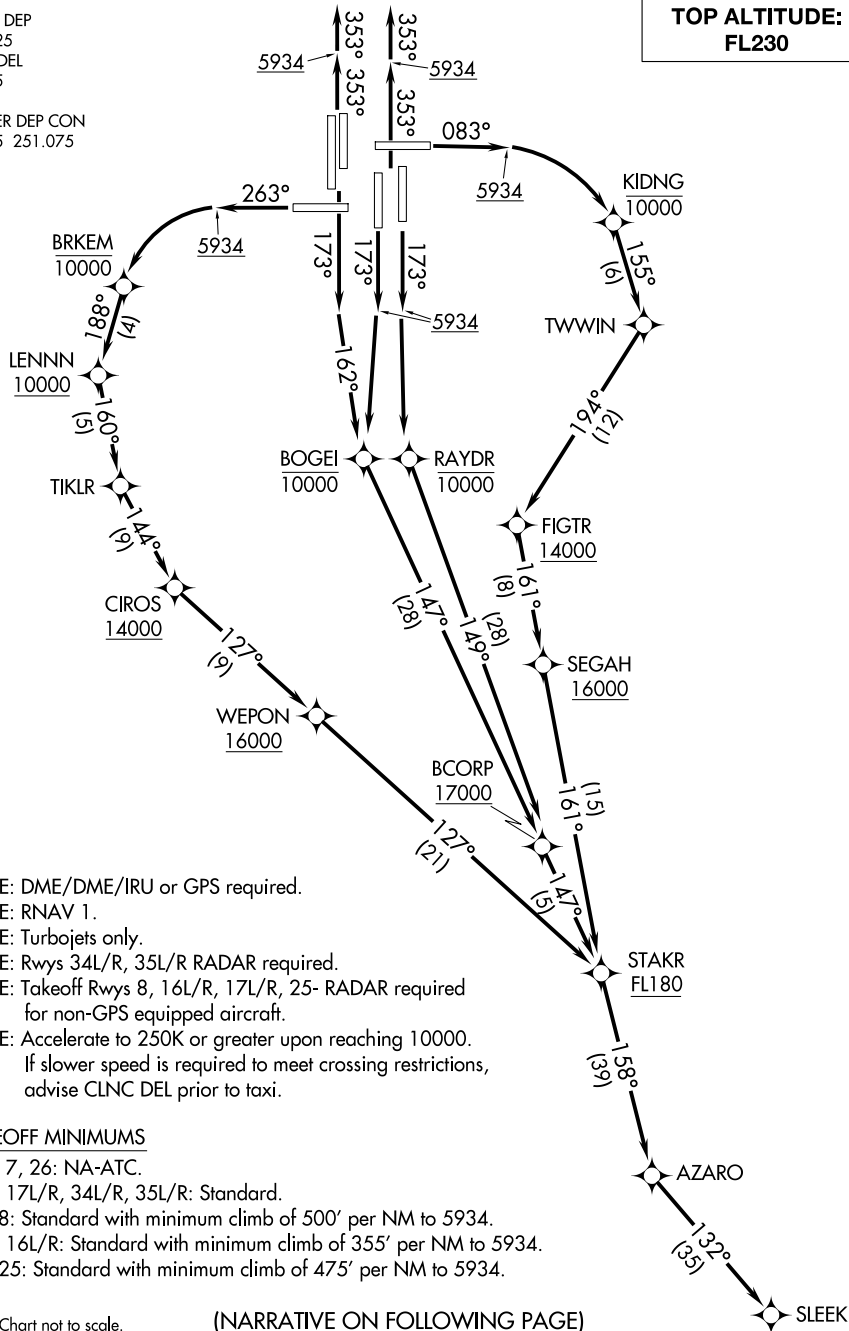
SLEEK TWO DEPARTURE (RNAV)

AL-9077 (FAA)

DENVER INTL (DEN)
DENVER, COLORADO

TOP ALTITUDE:
FL230

D-ATIS DEP
134.025
CLNC DEL
118.75
CPDLC
DENVER DEP CON
128.45 251.075



NOTE: DME/DME/IRU or GPS required.
NOTE: RNAV 1.
NOTE: Turbojets only.
NOTE: Rwy 34L/R, 35L/R RADAR required.
NOTE: Takeoff Rwy 8, 16L/R, 17L/R, 25- RADAR required for non-GPS equipped aircraft.
NOTE: Accelerate to 250K or greater upon reaching 10000.
If slower speed is required to meet crossing restrictions, advise CLNC DEL prior to taxi.

TAKEOFF MINIMUMS

Rwys 7, 26: NA-ATC.
Rwys 17L/R, 34L/R, 35L/R: Standard.
Rwy 8: Standard with minimum climb of 500' per NM to 5934.
Rwys 16L/R: Standard with minimum climb of 355' per NM to 5934.
Rwy 25: Standard with minimum climb of 475' per NM to 5934.

NOTE: Chart not to scale.

(NARRATIVE ON FOLLOWING PAGE)

SLEEK TWO DEPARTURE (RNAV)



DEPARTURE ROUTE DESCRIPTION
SEE ADDITIONAL REQUIREMENTS ON AAUP

TAKEOFF RUNWAY 8: Climb on heading 083° to 5934, then right turn direct KIDNG at or below 10000, then on track 155° to TWWIN, then on track 194° to cross FIGTR at or above 14000, then on track 161° to cross SEGAAH at or above 16000, then on track 161° to cross STAKR at or above FL180, thence

TAKEOFF RUNWAYS 16L/R: Climb on heading 173° to intercept course 162° to cross BOGEI at or below 10000, then on track 147° to cross BCORP at or above 17000, then on track 147° to cross STAKR at or above FL180, thence

TAKEOFF RUNWAY 17L: Climb on heading 173° to 5934, then direct RAYDR at or below 10000, then on track 149° to cross BCORP at or above 17000, then on track 147° to cross STAKR at or above FL180, thence

TAKEOFF RUNWAY 17R: Climb on heading 173° to 5934, then direct BOGEI at or below 10000, then on track 147° to cross BCORP at or above 17000, then on track 147° to cross STAKR at or above FL180, thence

TAKEOFF RUNWAY 25: Climb on heading 263° to 5934, then left turn direct BRKEM at or below 10000, then on track 188° to cross LENNN at or above 10000, then on track 160° to TIKLR, then on track 144° to cross CIROS at or above 14000, then on track 127° to cross WEPON at or above 16000, then on track 127° to cross STAKR at or above FL180, thence

TAKEOFF RUNWAYS 34L/R, 35L/R: Climb on heading 353° to 5934, then on heading 353° or as assigned by ATC, expect vectors to cross STAKR at or above FL180, thence

. . . . on track 158° to AZARO, then on track 132° to SLEEK. Maintain FL230 or filed lower altitude. Expect higher filed altitude ten minutes after departure.

SW-1, 25 DEC 2025 to 22 JAN 2026

SW-1, 25 DEC 2025 to 22 JAN 2026