

(WLDCT6.MCI) 23278

WILDCAT SIX DEPARTURE

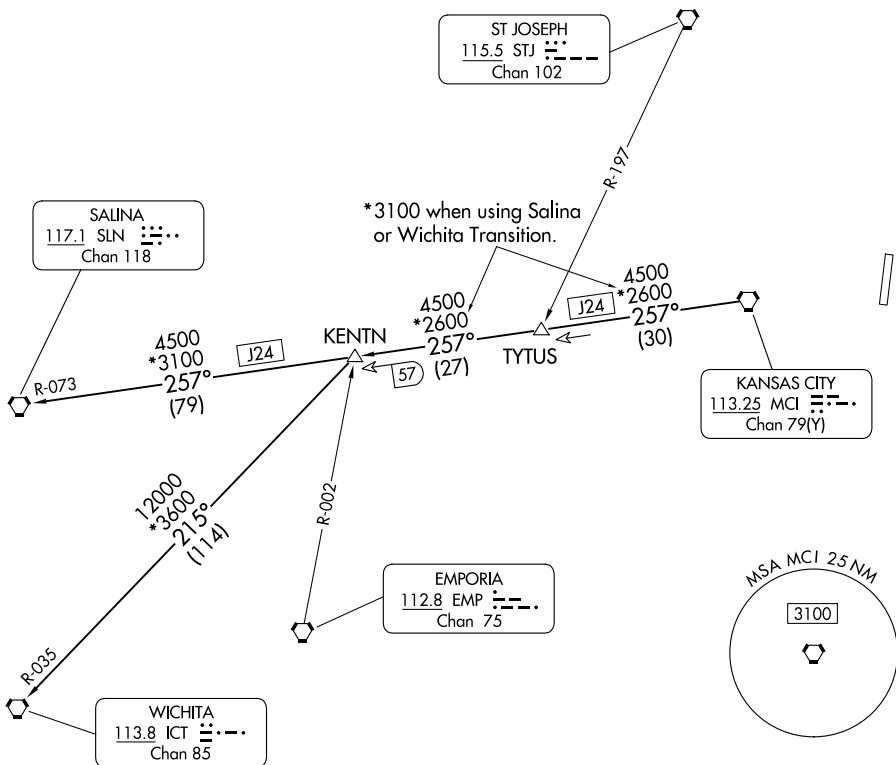
AL-9229 (FAA)

MIDWEST NTL AIR CENTER (GPH)
MOSBY, MISSOURI

KANSAS CITY DEP CON
118.4 307.35
CLNC DEL
118.2

RADAR required.

TOP ALTITUDE:
10000



TAKEOFF MINIMUMS
Rwys 18, 36: Standard.

NOTE: Chart not to scale.

NC-3, 25 DEC 2025 to 22 JAN 2026

NC-3, 25 DEC 2025 to 22 JAN 2026



DEPARTURE ROUTE DESCRIPTION

TAKEOFF ALL RUNWAYS: Climb on assigned heading for RADAR vectors to appropriate route. Maintain 10000, expect filed altitude 10 minutes after departure.

KENTN TRANSITION (WLDCT6.KENTN): From over MCI VORTAC on MCI R-257 to KENTN.

SALINA TRANSITION (WLDCT6.SLN): From over MCI VORTAC on MCI R-257 and SLN R-073 to SLN VORTAC.

WICHITA TRANSITION (WLDCT6.ICT): From over MCI VORTAC on MCI R-257 to KENTN, then on ICT R-035 to ICT VORTAC.

WILDCAT SIX DEPARTURE

(WLDCT6.MCI) 05OCT23

MOSBY, MISSOURI
MIDWEST NTL AIR CENTER (GPH)