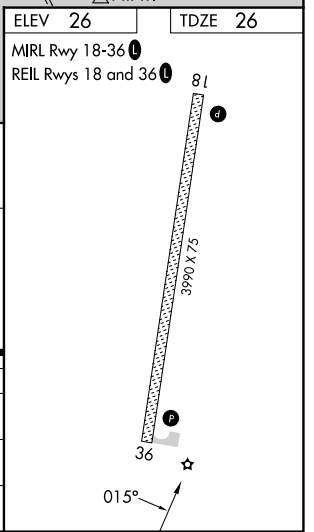
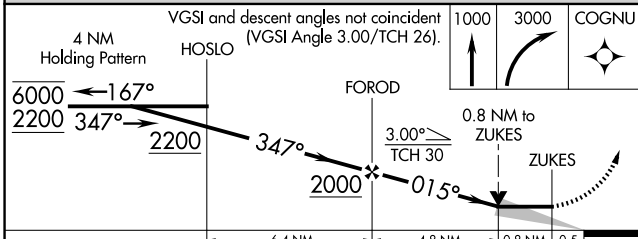
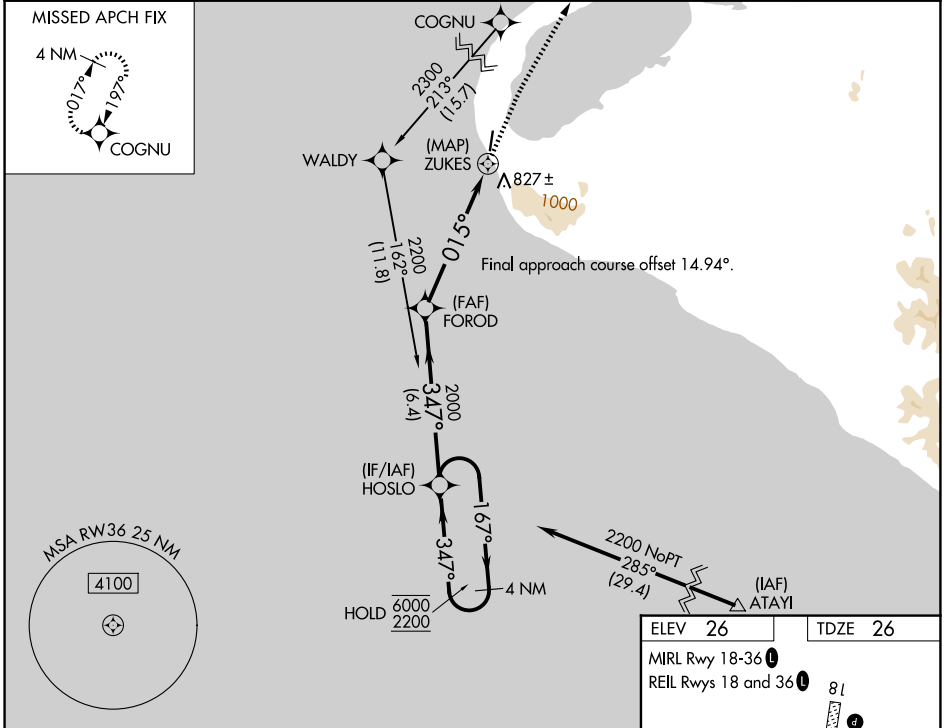


WAAS CH <b>72847</b> <b>W36A</b>	APP CRS <b>015°</b>	Rwy Ldg <b>3990</b> TDZE <b>26</b> Apt Elev <b>26</b>
--	------------------------	---

# RNAV (GPS) Y RWY 36

WALES (IWK) (PAIW)

RNP APCH - GPS.		MISSED APPROACH: Climb to 1000 then climbing right turn to 3000 direct COGNU and hold.	
<p>Circling NA east of Rwy 18-36. -26°C</p>		AWOS-3P <b>118.525</b>	ANCHORAGE CENTER <b>133.3 290.4</b>
		NOME RADIO <b>122.6</b>	CTAF <b>123.0</b>



CATEGORY	A	B	C	D
LP MDA	460-1	434 (500-1)	460-1¼	434 (500-1¼)
LNAV MDA	920-1¼	894 (900-1¼)	920-2½	894 (900-2½)
CIRCLING	920-1¼	894 (900-1¼)	920-2¾ 894 (900-2¾)	920-3 894 (900-3)

AK, 27 NOV 2025 to 22 JAN 2026

AK, 27 NOV 2025 to 22 JAN 2026