

MAYNR THREE DEPARTURE (RNAV)
(MAYNR3.MAYNR) 31OCT24
HOMESTEAD, FLORIDA
MIAMI HOMESTEAD GENERAL AVIATION (X51)

MIAMI DEP CON
125.5 354.1
AWOS-3
118.375
CTAF
122.8

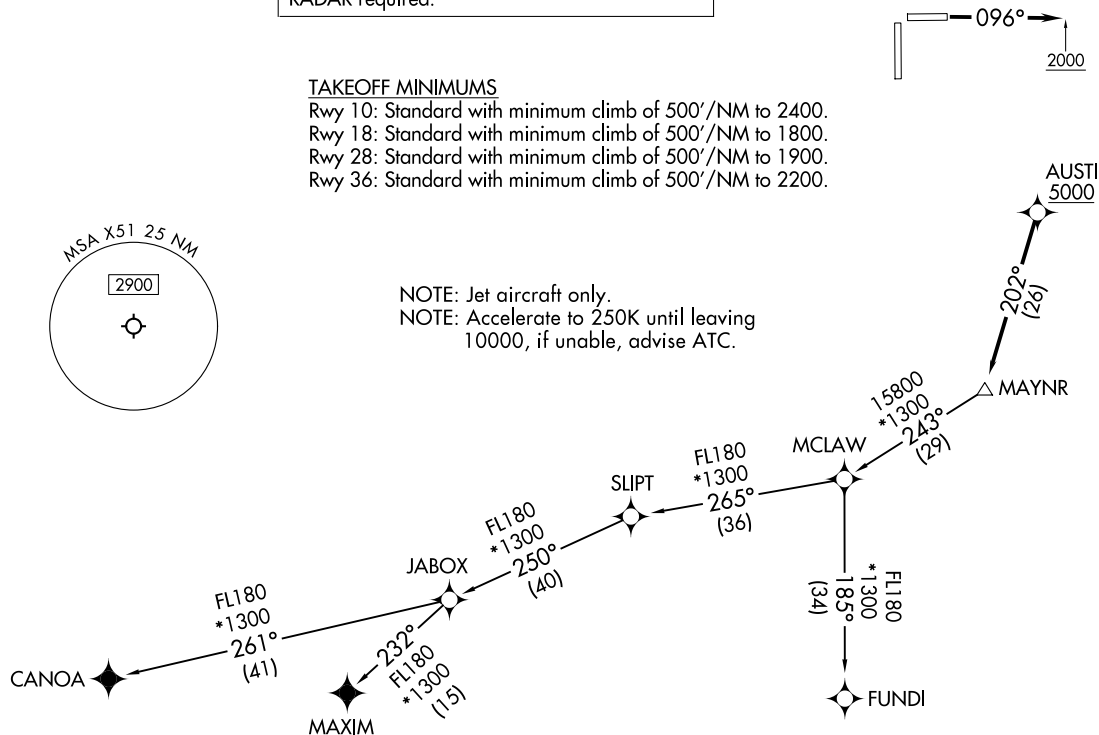
RNAV 1 - DME/DME/IRU or GPS.
From SLIPT to MAXIM: RNAV 1- GPS.
From SLIPT to CANOA: RNAV 1- GPS.
RADAR required for non-GPS equipped aircraft.
RADAR required.

TOP ALTITUDE:
ASSIGNED BY ATC

TAKEOFF MINIMUMS

Rwy 10: Standard with minimum climb of 500'/NM to 2400.
Rwy 18: Standard with minimum climb of 500'/NM to 1800.
Rwy 28: Standard with minimum climb of 500'/NM to 1900.
Rwy 36: Standard with minimum climb of 500'/NM to 2200.

NOTE: Jet aircraft only.
NOTE: Accelerate to 250K until leaving
10000, if unable, advise ATC.



(CONTINUED ON FOLLOWING PAGE)

(MAYNR3.MAYNR) 24305
MAYNR THREE DEPARTURE (RNAV)
AL-10263 (FAA)
MIAMI HOMESTEAD GENERAL AVIATION (X51)
HOMESTEAD, FLORIDA



DEPARTURE ROUTE DESCRIPTION

TAKEOFF RUNWAY 10: Climb on heading 096° to 2000, then as assigned by ATC for vectors to cross AUSTI at or above 5000, thence. . . .

TAKEOFF RUNWAYS 18, 28, 36: Climb on heading assigned by ATC for vectors to cross AUSTI or above 5000, thence. . . .

. . . .on track 202° to MAYNR, then on assigned transition, maintain ATC assigned altitude. Expect clearance to filed altitude within 10 minutes after departure.

- CANOA TRANSITION (MAYNR3.CANOA)
- FUNDI TRANSITION (MAYNR3.FUNDI)
- MAXIM TRANSITION (MAYNR3.MAXIM)

SE-3, 25 DEC 2025 to 22 JAN 2026

SE-3, 25 DEC 2025 to 22 JAN 2026