

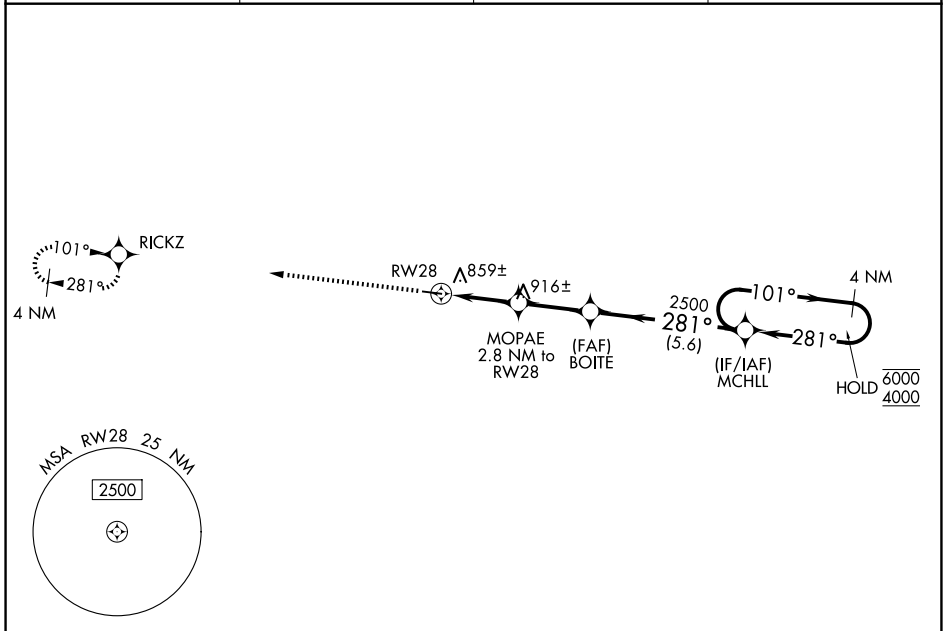
WAAS CH <b>77842</b> <b>W28A</b>	APP CRS <b>281°</b>	Rwy Ldg TDZE Apt Elev	<b>4000</b> <b>732</b> <b>732</b>
--	------------------------	-----------------------------	---

# RNAV (GPS) RWY 28

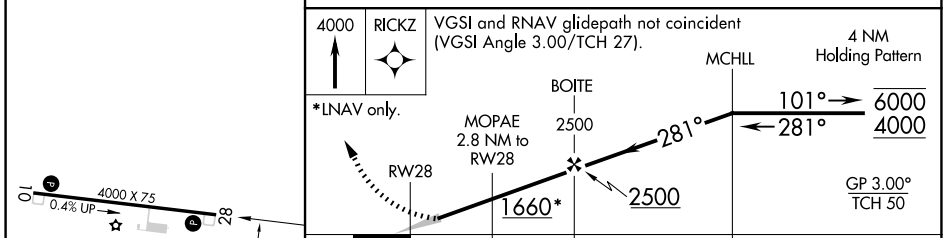
BRECKINRIDGE COUNTY (I93)

RNP APCH.	Baro-VNAV NA. Use Fort Knox altimeter setting, when not received, use Elizabethtown altimeter setting and increase LPV DA to 1047, LNAV/VNAV DA to 1185 and all MDA 20 feet.	MISSED APPROACH: Climb to 4000 direct RICKZ and hold, continue climb-in-hold to 4000.
-----------	--	---

AWOS-3PT <b>123.625</b>	KFTK ATIS ★ <b>109.6</b>	LOUISVILLE APP CON <b>123.675 327.0</b>	CTAF <b>122.9 0</b>
----------------------------	-----------------------------	--	------------------------



ELEV 732	TDZE 732
----------	----------



CATEGORY	A	B	C	D
LPV DA	1040-1		308 (400-1)	
LNAV/VNAV DA	1178-1 <sup>3</sup> / <sub>8</sub>		446 (500-1 <sup>3</sup> / <sub>8</sub> )	
LNAV MDA	1180-1	448 (500-1)	1180-1 <sup>3</sup> / <sub>8</sub>	448 (500-1 <sup>3</sup> / <sub>8</sub> )
CIRCLING	1380-1 648 (700-1)	1480-1 748 (800-1)	1480-2 <sup>1</sup> / <sub>4</sub> 748 (800-2 <sup>1</sup> / <sub>4</sub> )	1480-2 <sup>1</sup> / <sub>2</sub> 748 (800-2 <sup>1</sup> / <sub>2</sub> )

SE-1, 25 DEC 2025 to 22 JAN 2026

SE-1, 25 DEC 2025 to 22 JAN 2026