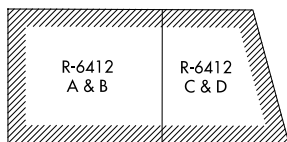


SPANISH FORK ONE DEPARTURE (OBSTACLE)

AL-11420 (FAA)

SPANISH FORK, UTAH

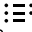
SALT LAKE CITY DEP CON
118.85 233.7
CTAF
122.9




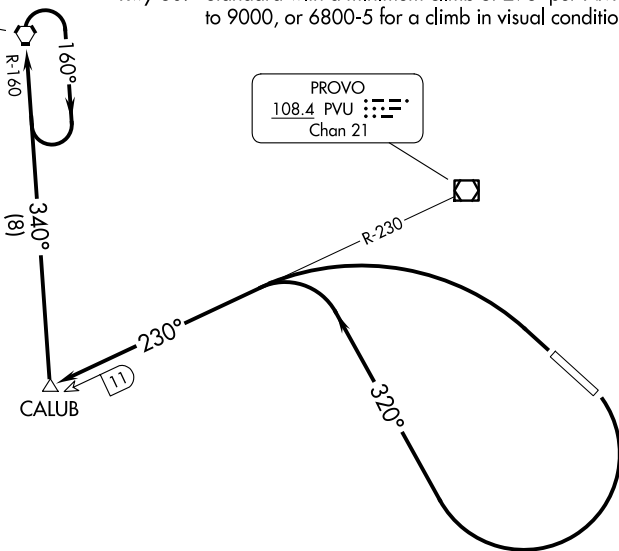
TAKEOFF MINIMUMS

Rwy 12: Standard with a minimum climb of 455' per NM to 7100, or 6800-5 for a climb in visual conditions.

Rwy 30: Standard with a minimum climb of 298' per NM to 9000, or 6800-5 for a climb in visual conditions.

FAIRFIELD
116.6 FFU 
Chan 113

PROVO
108.4 PVU 
Chan 21



NOTE: Chart not to scale.

(CONTINUED ON FOLLOWING PAGE)

DEPARTURE ROUTE DESCRIPTION

TAKEOFF RUNWAY 12: Climbing right turn to 11 500 on heading 320° and PVU VOR/DME R-230 to CALUB INT/PVU 11 DME, do not exceed 240K until CALUB INT/PVU 11 DME, thence

TAKEOFF RUNWAY 30: Climbing left turn to 11 500 to intercept PVU VOR/DME R-230 to CALUB INT/PVU 11 DME, thence

. . . . Climbing right turn on FFU R-160 to FFU VORTAC and hold, continue climb-in-hold to cross FFU VORTAC at MCA/MEA for route of flight.

VCOA RUNWAYS 12, 30: Obtain ATC approval for VCOA when requesting IFR clearance. Climb in visual conditions to cross Spanish Fork Muni/Woodhouse Fld at or above 11 200 before proceeding on course.

SPANISH FORK ONE DEPARTURE (OBSTACLE)

SPANISH FORK, UTAH

TAKEOFF OBSTACLE NOTES

- Rwy 12: Lighting 10' from DER, 29' left of centerline, 2' AGL/4530' MSL.
Fence 60' from DER, 481' right of centerline, 4535' MSL.
Building 198' from DER, 449' right of centerline, 12' AGL/4541' MSL.
Sign, building beginning 297' from DER, 461' right of centerline, up to 4552' MSL.
Building 1023' from DER, 600' right of centerline, 4555' MSL.
Tree 1031' from DER, 651' left of centerline, 4563' MSL.
Tree, building beginning 1140' from DER, 503' left of centerline, up to 4565' MSL.
Building 1173' from DER, 560' right of centerline, 4559' MSL.
Building 1434' from DER, 855' right of centerline, 4572' MSL.
Tree 1514' from DER, 742' left of centerline, 4568' MSL.
Pole 1818' from DER, 352' right of centerline, 4576' MSL.
Pole beginning 3232' from DER, 1134' right of centerline, up to 4621' MSL.
Pole, sign beginning 3499' from DER, 801' left of centerline, up to 106' AGL/4673' MSL.
Electrical system 3922' from DER, 628' right of centerline, 4637' MSL.
Pole 4450' from DER, 893' right of centerline, 4649' MSL.
Pole 4709' from DER, 1365' right of centerline, 4662' MSL.
Pole 5162' from DER, 1194' right of centerline, 4664' MSL.
Pole 2 NM from DER, 3639' left of centerline, 4853' MSL.
- Rwy 30: Lighting 9' from DER, 29' right of centerline, 2' AGL/4525' MSL.
Vegetation 36' from DER, 145' right of centerline, 9' AGL/4527' MSL.
Tree 750' from DER, 557' left of centerline, 4546' MSL.
Pole 1182' from DER, 595' left of centerline, 50' AGL/4570' MSL.
Pole beginning 1479' from DER, 268' left of centerline, up to 60' AGL/4579' MSL.
Tree 1505' from DER, 550' right of centerline, 49' AGL/4565' MSL.