

WAAS CH 65648 W19A	APP CRS 188°	Rwy Ldg TDZE Apt Elev	6100 5049 5065
---------------------------------	------------------------	-----------------------------	---

RNAV (GPS) RWY 19

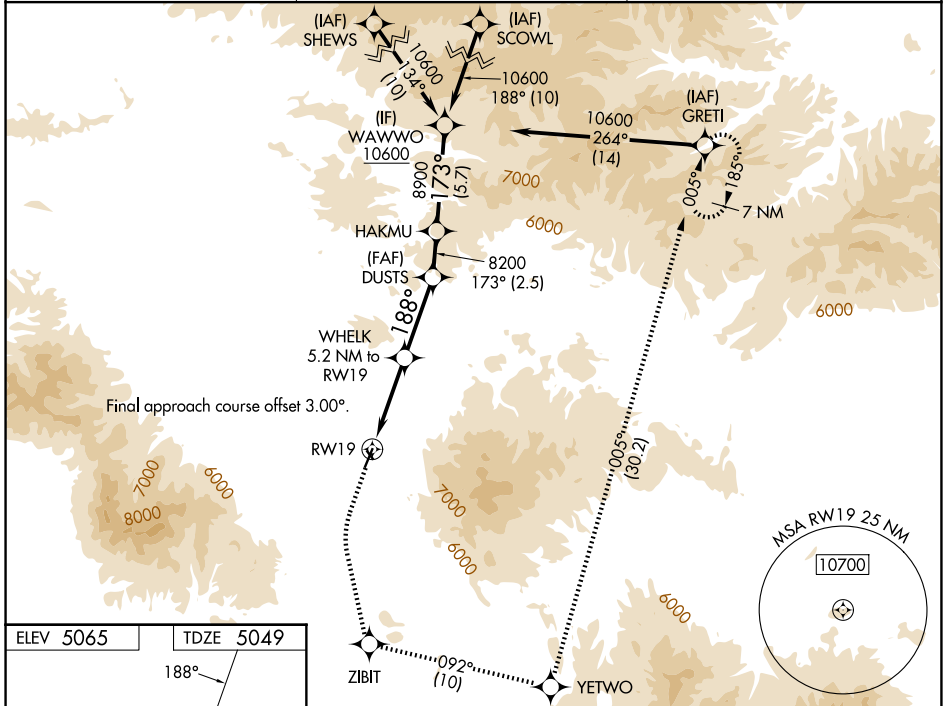
WHITE SULPHUR SPRINGS (7S6)

RNP APCH - GPS.

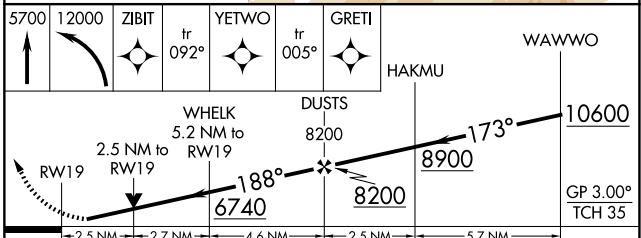
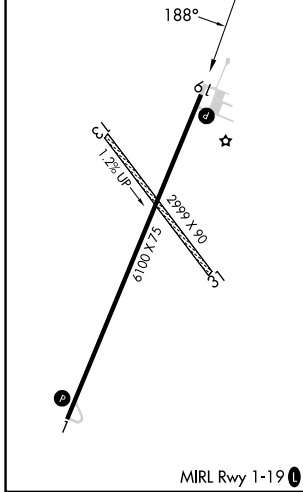
⚠ For uncompensated Baro-VNAV systems, LNAV/VNAV NA below -25°C or above 54°C. Rwy 19 helicopter visibility reduction below 3/4 SM NA. Circling NA to Rwys 13 and 31. Circling NA for Cats C and D east of Rwy 1-19. Circling NA for all Cats east of Rwy 1-19 at night.

MISSED APPROACH: Climb to 5700 then climbing left turn to 12000 direct ZIBIT then on track 092° to YETWO then on track 005° to GRETI and hold.

AWOS-3PT 118.525	SALT LAKE CENTER 133.4 285.4	CTAF 122.9
----------------------------	--	----------------------



ELEV 5065	TDZE 5049
-----------	-----------



CATEGORY	A	B	C	D
LPV DA	5299-1		250 (300-1)	
LNAV/VNAV DA	5706-1 7/8		657 (700-1 7/8)	
LNAV MDA	5880-1 831 (900-1)	5880-1 1/4 831 (900-1 1/4)	5880-2 1/2	831 (900-2 1/2)
CIRCLING	5880-1 1/4 815 (900-1 1/4)	5920-1 1/4 855 (900-1 1/4)	5920-2 1/2 855 (900-2 1/2)	5920-2 3/4 855 (900-2 3/4)

NW-1, 25 DEC 2025 to 22 JAN 2026

NW-1, 25 DEC 2025 to 22 JAN 2026