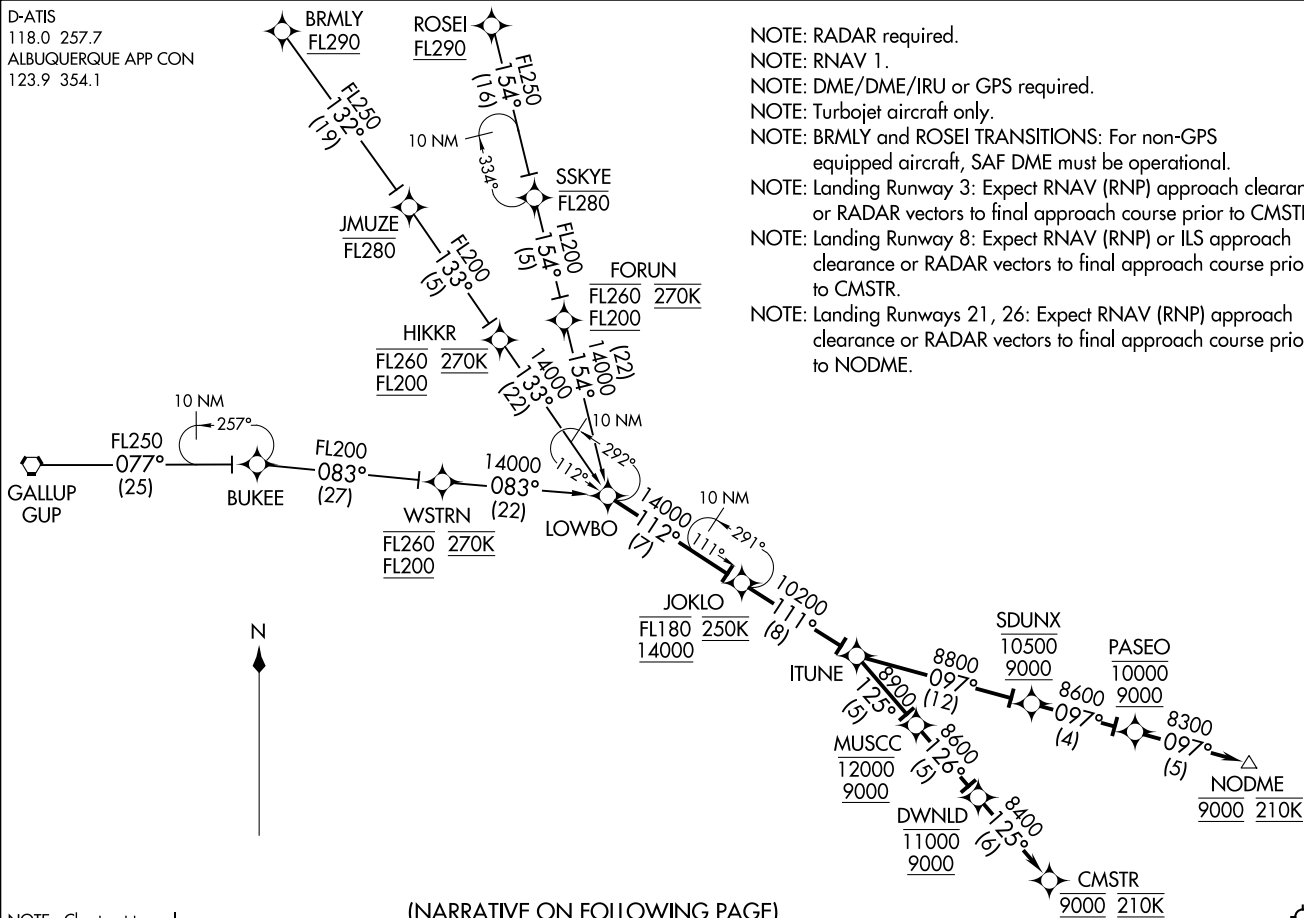


LOWBO THREE ARRIVAL (RNAV)

(LOWBO.LOWBO3) 08JAN15

 ALBUQUERQUE, NEW MEXICO
 ALBUQUERQUE INTL SUNPORT (ABQ)

 D-ATIS
 118.0 257.7
 ALBUQUERQUE APP CON
 123.9 354.1


NOTE: RADAR required.

NOTE: RNAV 1.

NOTE: DME/DME/IRU or GPS required.

NOTE: Turbojet aircraft only.

NOTE: BRMLY and ROSEI TRANSITIONS: For non-GPS equipped aircraft, SAF DME must be operational.

NOTE: Landing Runway 3: Expect RNAV (RNP) approach clearance or RADAR vectors to final approach course prior to CMSTR.

NOTE: Landing Runway 8: Expect RNAV (RNP) or ILS approach clearance or RADAR vectors to final approach course prior to CMSTR.

NOTE: Landing Runways 21, 26: Expect RNAV (RNP) approach clearance or RADAR vectors to final approach course prior to NODME.

LOWBO THREE ARRIVAL (RNAV)

AL-12 (FAA)

 ALBUQUERQUE INTL SUNPORT (ABQ)
 ALBUQUERQUE, NEW MEXICO

ARRIVAL ROUTE DESCRIPTION

- BRMLY TRANSITION (BRMLY.LOWBO3)
- GALLUP TRANSITION (GUP.LOWBO3)
- ROSEI TRANSITION (ROSEI.LOWBO3)

From LOWBO on track 112° to cross JOKLO between 14000 and FL180 and at 250K, then on track 111° to ITUNE.

LANDING RUNWAY 3: From ITUNE on track 125° to cross MUSCC between 9000 and 12000, then on track 126° to cross DWNLD between 9000 and 11000, then on track 125° to cross CMSTR at 9000 and at 210K. Expect RNAV (RNP) approach or RADAR vectors to final approach course.

LANDING RUNWAY 8: From ITUNE on track 125° to cross MUSCC between 9000 and 12000, then on track 126° to cross DWNLD between 9000 and 11000, then on track 125° to cross CMSTR at 9000 and at 210K. Expect RNAV (RNP) or ILS approach or RADAR vectors to final approach course.

LANDING RUNWAYS 21/26: From ITUNE on track 097° to cross SDUNX between 9000 and 10500, then on track 097° to cross PASEO between 9000 and 10000, then on track 097° to cross NODME at 9000 and at 210K. Expect RNAV (RNP) approach or RADAR vectors to final approach course.