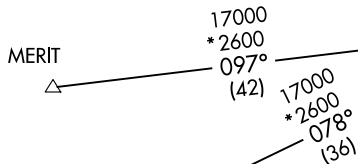
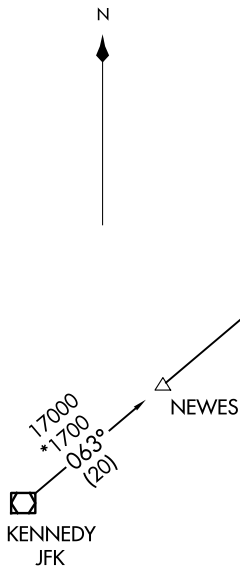
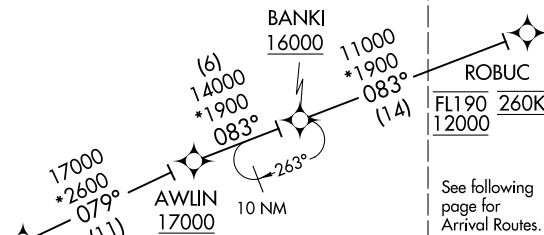


ROBUC THREE ARRIVAL (RNAV) Transition Routes  
(ROBUC.ROBUC3) 120CT17

D-ATIS  
135.0  
BOSTON APP CON  
120.6 263.1



NOTE: RADAR required.  
NOTE: RNAV 1.  
NOTE: DME/DME/IRU or GPS required.  
NOTE: Turbojet aircraft only.  
NOTE: RUIZE transition assigned by ATC only.



See following  
page for  
Arrival Routes.

NOTE: Chart not to scale.

(CONTINUED ON FOLLOWING PAGE)

KENNEDY TRANSITION (JFK.ROBUC3)  
MERIT TRANSITION (MERIT.ROBUC3)  
RUIZE TRANSITION (RUIZE.ROBUC3)

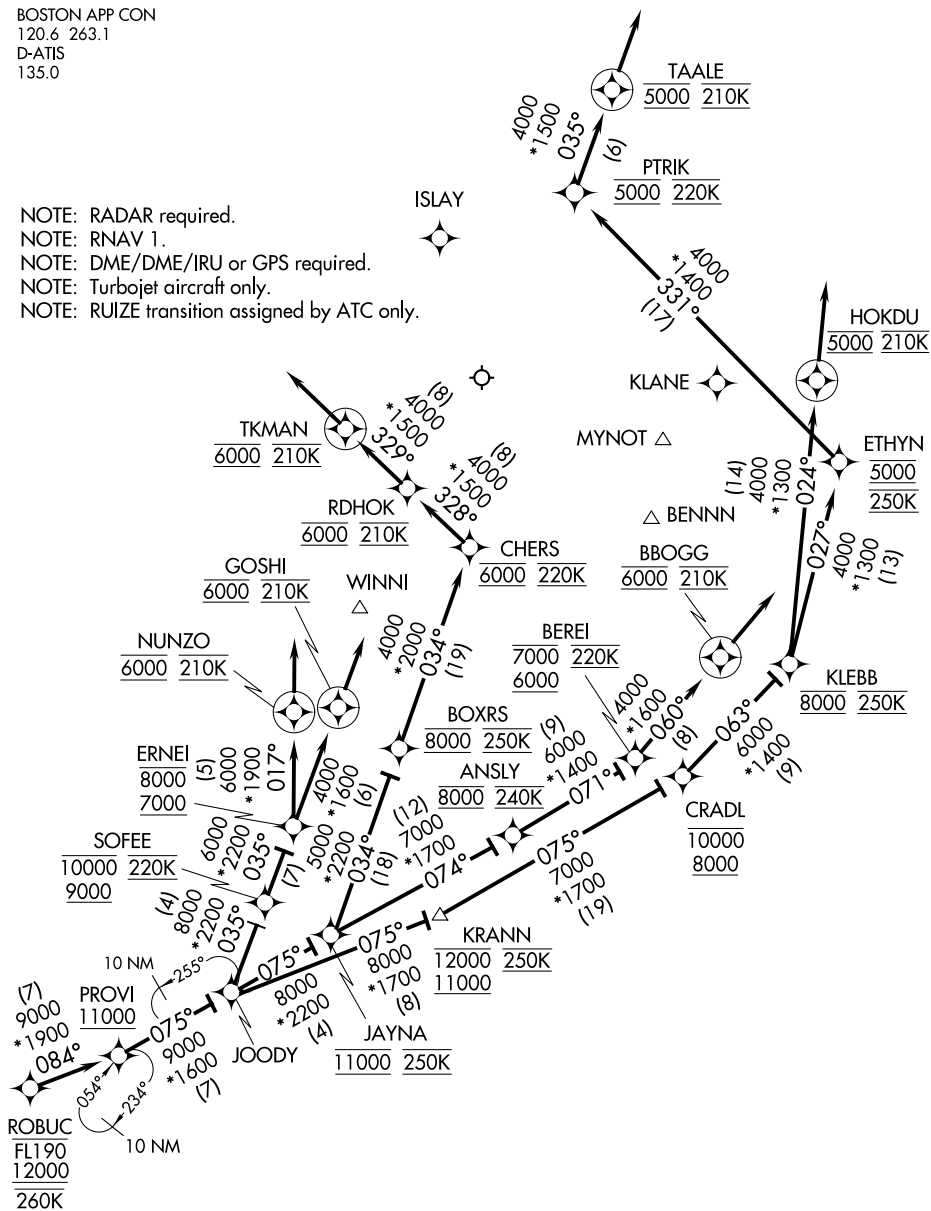
(ROBUC.ROBUC3) 17285  
AL-58 (FAA)  
GENERAL EDWARD LAWRENCE LOGAN INTL (BOS)  
Transition Routes  
BOSTON, MASSACHUSETTS

## ROBUC THREE ARRIVAL (RNAV) Arrival Routes

BOSTON, MASSACHUSETTS

BOSTON APP CON  
120.6 263.1  
D-ATIS  
135.0

NOTE: RADAR required.  
NOTE: RNAV 1.  
NOTE: DME/DME/IRU or GPS required.  
NOTE: Turbojet aircraft only.  
NOTE: RUIZE transition assigned by ATC only.



NOTE: Chart not to scale.

(CONTINUED ON FOLLOWING PAGE)

## ROBUC THREE ARRIVAL (RNAV) Arrival Routes

BOSTON, MASSACHUSETTS

(ROBUC.ROBUC3) 12OCT17

GENERAL EDWARD LAWRENCE LOGAN INTL (BOS)

NE-1, 22 JAN 2026 to 19 FEB 2026

ARRIVAL ROUTE DESCRIPTION

From ROBUC on track 084° to cross PROVI at or above 11000, then on track 075° to JOODY. Then on assigned runway transition.

LANDING RWY 4L: From JOODY on track 035° to cross SOFEE between 9000 and 10000 and at 220K, then on track 035° to cross ERNEI between 7000 and 8000, then on track 017° to cross NUNZO at 6000 and at 210K, then on track 017°. Expect RADAR vectors to final approach course.

LANDING RWY 4R: From JOODY on track 035° to cross SOFEE between 9000 and 10000 and at 220K, then on track 035° to cross ERNEI between 7000 and 8000, then on track 035° to cross GOSHI at 6000 and at 210K, then on track 035°. Expect RADAR vectors to final approach course.

LANDING RWY 15R: From JOODY on track 075° to cross JAYNA at 11000 and at 250K, then on track 034° to cross BOXRS at 8000 and at 250K, then on track 034° to cross CHERS at 6000 and at 220K, then on track 328° to cross RDHOK at 6000 and at 210K, then on track 329° to cross TKMAN at 6000 and at 210K, then on track 329°. Expect RADAR vectors to final approach course.

LANDING RWY 22L/R: From JOODY on track 075° to cross KRANN between 11000 and 12000 and at 250K, then on track 075° to cross CRADL between 8000 and 10000, then on track 063° to cross KLEBB at 8000 and at 250K, then on track 027° to cross ETHYN at 5000 and at 250K, then on track 331° to cross PTRIK at 5000 and at 220K, then on track 035° to cross TAALE at 5000 and at 210K, then on track 035°. Expect RADAR vectors to final approach course.

LANDING RWY 27: From JOODY on track 075° to cross KRANN between 11000 and 12000 and at 250K, then on track 075° to cross CRADL between 8000 and 10000, then on track 063° to cross KLEBB at 8000 and at 250K, then on track 024° to cross HOKDU at 5000 and at 210K, then on track 024°. Expect RADAR vectors to final approach course.

LANDING RWYS 32, 33L: From JOODY on track 075° to cross JAYNA at 11000 and at 250K, then on track 074° to cross ANSLY at 8000 and at 240K, then on track 071° to cross BEREI between 6000 and 7000 and at 220K, then on track 060° to cross BBOGG at 6000 and at 210K, then on track 060°. Expect RADAR vectors to final approach course.