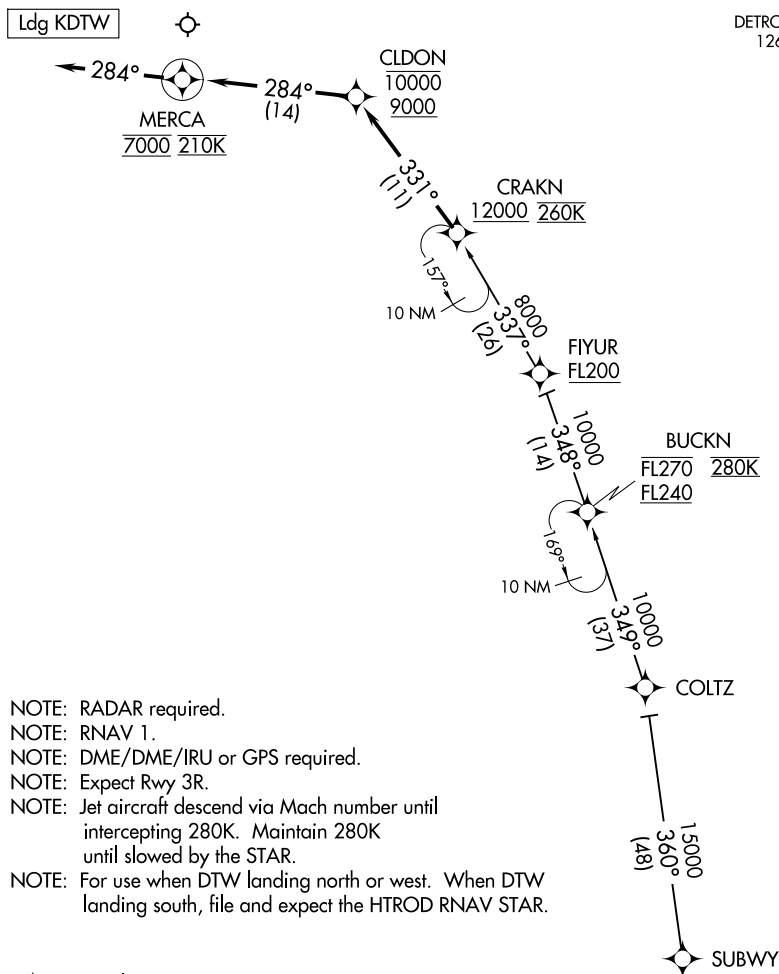


CRAKN TWO ARRIVAL (RNAV) AL-119 (FAA)

DETROIT METRO WAYNE COUNTY (DTW)

DETROIT, MICHIGAN

D-ATIS	
133.675	
DETROIT APP CON	
126.225	284.0



NOTE: RADAR required.

NOTE: RNAV 1.

NOTE: DME/DME/IRU or GPS required.

NOTE: Expect Rwy 3R.

NOTE: Jet aircraft descend via Mach number until intercepting 280K. Maintain 280K until slowed by the STAR.

NOTE: For use when DTW landing north or west. When DTW landing south, file and expect the HTROD RNAV STAR.

NOTE: Chart not to scale.

ARRIVAL ROUTE DESCRIPTION

SUBWY TRANSITION (SUBWY.CRAKN2)

From CRAKN on track 331° to cross CLDON between 9000 and 10000, then on track 284° to cross MERCA at 7000 and at 210K, then on track 284°. Expect RADAR vectors to final approach course.

LOST COMMUNICATIONS:

From MERCA, execute ILS Rwy 3R approach.

CRAKN TWO ARRIVAL (RNAV)

(CRAKN.CRAKN2) 10OCT19

DETROIT, MICHIGAN

DETROIT METRO WAYNE COUNTY (DTW)

EC-1, 22 JAN 2026 to 19 FEB 2026