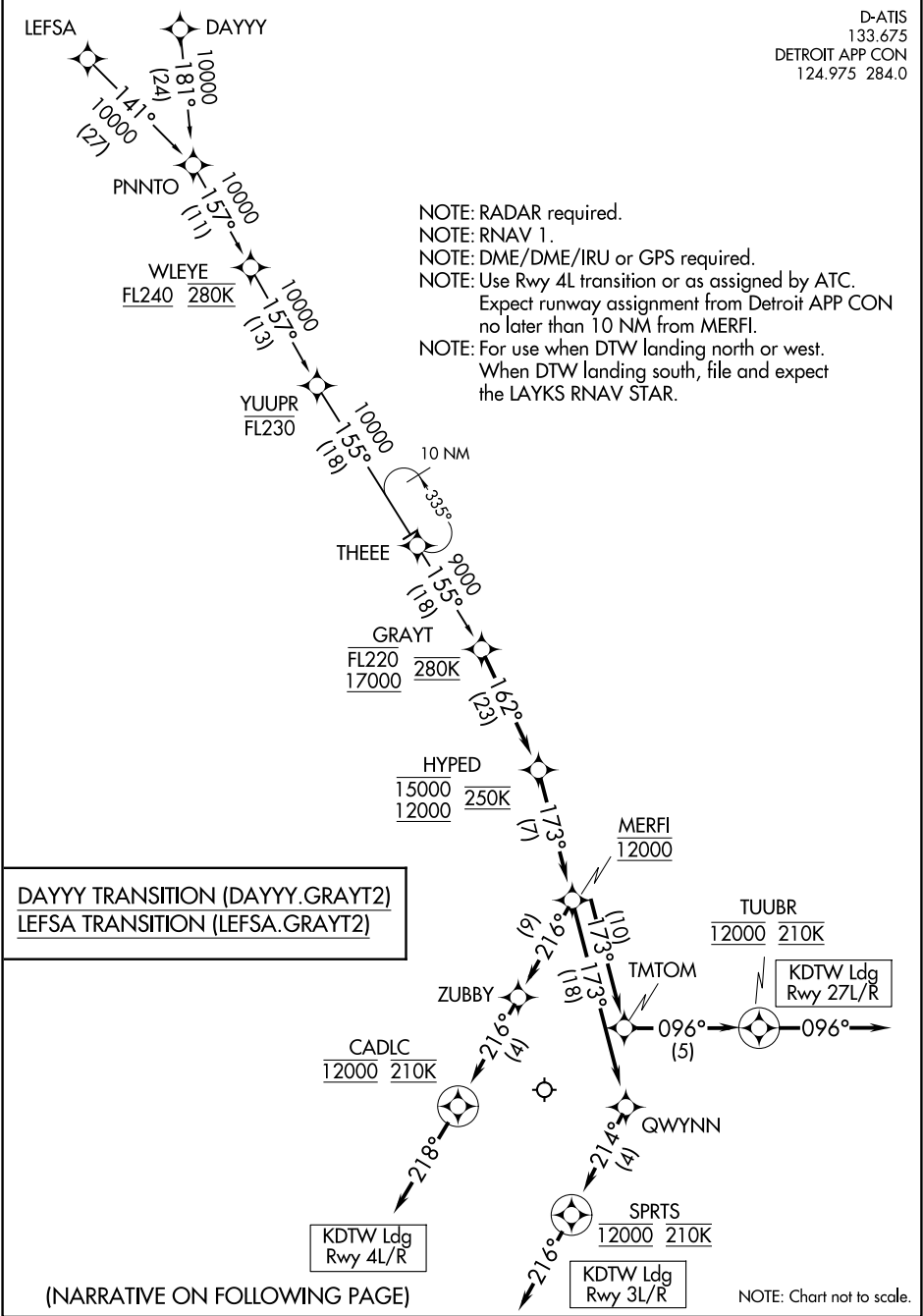


(GRAYT.GRAYT2) 21112
GRAYT TWO ARRIVAL(RNAV)

AL-119 (FAA)

DETROIT METRO WAYNE COUNTY (DTW)
DETROIT, MICHIGAN

D-ATIS
133.675
DETROIT APP CON
124.975 284.0



GRAYT TWO ARRIVAL(RNAV)
(GRAYT.GRAYT2) 10OCT19

DETROIT, MICHIGAN
DETROIT METRO WAYNE COUNTY (DTW)

EC-1, 22 JAN 2026 to 19 FEB 2026

EC-1, 22 JAN 2026 to 19 FEB 2026

ARRIVAL ROUTE DESCRIPTION

From GRAYT on track 162° to cross HYPED between 12000 and 15000 and at 250K, then on track 173° to cross MERFI at 12000.

LANDING RWY 3L/R: From MERFI on track 173° to QWYNN, then on track 214° to cross SPRTS at 12000 and at 210K, then on track 216°.
Expect RADAR vectors to final approach course.

LANDING RWY 4L/R: From MERFI on track 216° to ZUBBY, then on track 216° to cross CADLC at 12000 and at 210K, then on track 218°.
Expect RADAR vectors to final approach course.

LANDING RWY 27L/R: From MERFI on track 173° to TMTOM, then on track 096° to cross TUUBR at 12000 and at 210K, then on track 096°.
Expect RADAR vectors to final approach course.

EC-1, 22 JAN 2026 to 19 FEB 2026

EC-1, 22 JAN 2026 to 19 FEB 2026