

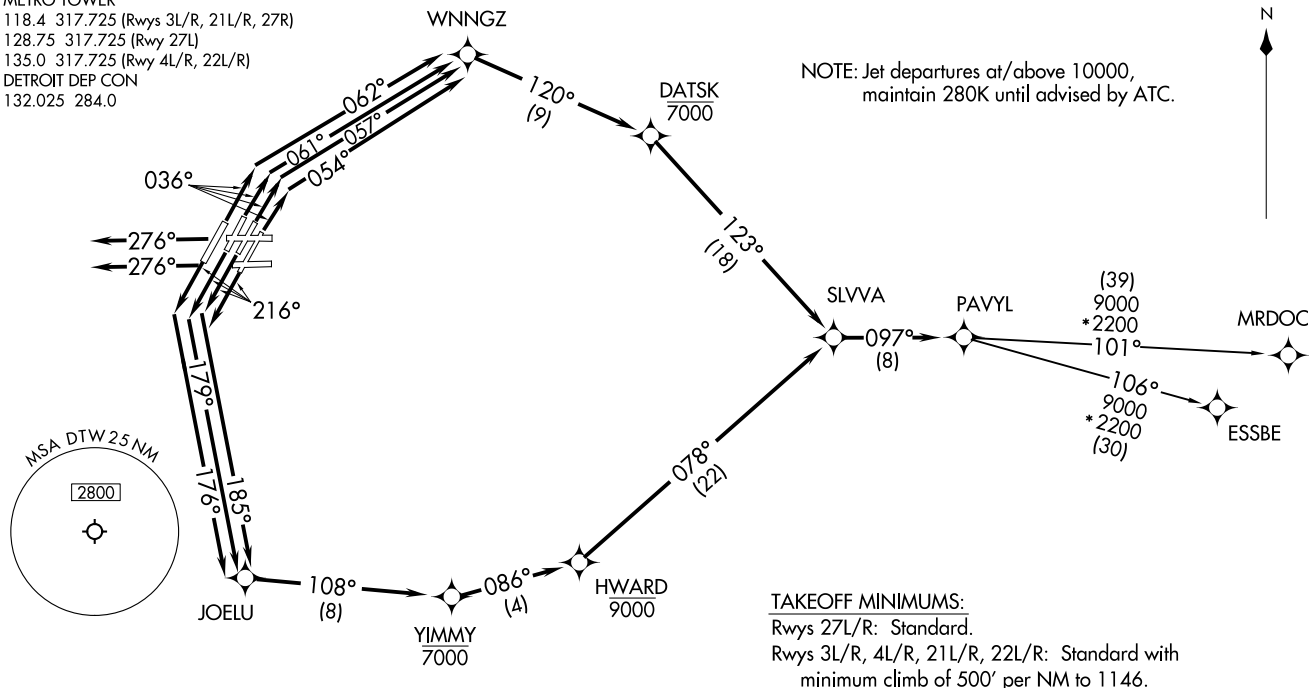
PAVYL THREE DEPARTURE (RNAV)
(PAVYL3, PAVYL) 16 MAY 24

DETROIT, MICHIGAN
DETROIT METRO WAYNE COUNTY (DTW)

D-ATIS 118.125
CLNC DEL 120.65
CPDLC
GND CON
121.8 (NW) 119.45 (NE)
132.725 (SW) 119.25 (SE)
METRO TOWER
118.4 317.725 (Rwys 3L/R, 21L/R, 27R)
128.75 317.725 (Rwy 27L)
135.0 317.725 (Rwy 4L/R, 22L/R)
DETROIT DEP CON
132.025 284.0

RNAV 1 - DME/DME/IRU or GPS.
RADAR required.

TOP ALTITUDE:
17000



NOTE: Chart not to scale.

(CONTINUED ON FOLLOWING PAGE)

(PAVYL3, PAVYL) 24137
PAVYL THREE DEPARTURE (RNAV)

DETROIT METRO WAYNE COUNTY (DTW)
DETROIT, MICHIGAN
AL-119 (FAA)



DEPARTURE ROUTE DESCRIPTION

SEE ADDITIONAL REQUIREMENTS IN RNAV DEPARTURE AAPP.

TAKEOFF RUNWAY 3L: Climb on heading 036° to intercept course 057° to WNNNGZ, then on track 120° to cross DATSK at or below 7000, then on track 123° to SLVVA, thence....

TAKEOFF RUNWAY 3R: Climb on heading 036° to intercept course 054° to WNNNGZ, then on track 120° to cross DATSK at or below 7000, then on track 123° to SLVVA, thence....

TAKEOFF RUNWAY 4L: Climb on heading 036° to intercept course 062° to WNNNGZ, then on track 120° to cross DATSK at or below 7000, then on track 123° to SLVVA, thence....

TAKEOFF RUNWAY 4R: Climb on heading 036° to intercept course 061° to WNNNGZ, then on track 120° to cross DATSK at or below 7000, then on track 123° to SLVVA, thence....

TAKEOFF RUNWAYS 21L/R: Climb on heading 216° to intercept course 185° to JOELU, then on track 108° to cross YIMMY at or below 7000, then on track 086° to cross HWARD at or below 9000, then on track 078° to SLVVA, thence....

TAKEOFF RUNWAY 22L: Climb on heading 216° to intercept course 179° to JOELU, then on track 108° to cross YIMMY at or below 7000, then on track 086° to cross HWARD at or below 9000, then on track 078° to SLVVA, thence....

TAKEOFF RUNWAY 22R: Climb on heading 216° to intercept course 176° to JOELU, then on track 108° to cross YIMMY at or below 7000, then on track 086° to cross HWARD at or below 9000, then on track 078° to SLVVA, thence....

TAKEOFF RUNWAYS 27L/27R: Climb on heading 276° or as assigned by ATC, for RADAR vectors to SLVVA, thence....

....on track 097° to PAVYL, then on (transition). Maintain 17000 or as assigned by ATC, expect filed altitude 10 minutes after departure.

ESSBE TRANSITION (PAVYL3.ESSBE):
MRDOC TRANSITION (PAVYL3.MRDOC):