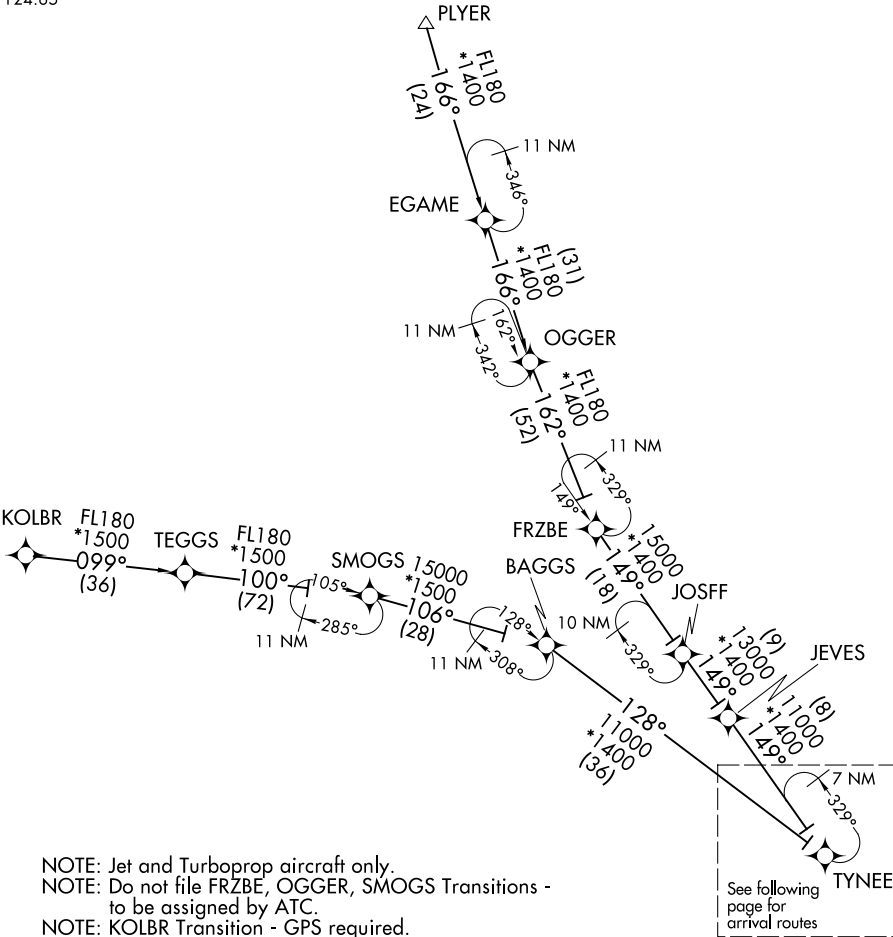


TYNEE FOUR ARRIVAL (RNAV) Transition Routes

FORT MYERS, FLORIDA

FORT MYERS APP CON ★
134.425 306.2
FMY ATIS
123.725
RSW D-ATIS
124.65

RNAV 1 - DME/DME/IRU or GPS.
From KOLBR: RNAV 1-GPS.
RADAR required.



NOTE: Chart not to scale

- FRZBE TRANSITION (FRZBE.TYNEE4)
- KOLBR TRANSITION (KOLBR.TYNEE4)
- OGGER TRANSITION (OGGER.TYNEE4)
- PLYER TRANSITION (PLYER.TYNEE4)
- SMOGS TRANSITION (SMOGS.TYNEE4)

(CONTINUED ON FOLLOWING PAGE)

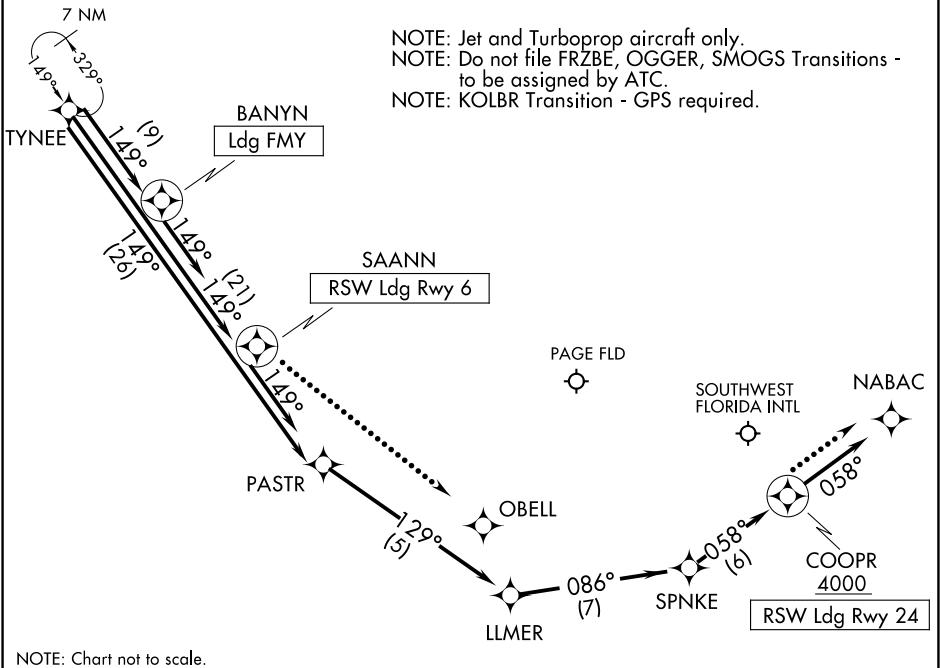
TYNEE FOUR ARRIVAL (RNAV) Transition Routes

FORT MYERS, FLORIDA

FORT MYERS APP CON ★
134.425 306.2
FMY ATIS
123.725
RSW D-ATIS
124.65

RNAV 1 - DME/DME/IRU or GPS.
From KOLBR: RNAV 1-GPS.

RADAR required.



ARRIVAL ROUTE DESCRIPTION

LANDING RSW RUNWAY 6: From TYNEE on track 149° to SAANN, then on track 149°. Expect RADAR vectors to final approach course.

LANDING RSW RUNWAY 24: From TYNEE on track 149° to PASTR, then on track 129° to LLMER, then on track 086° to SPNKE, then on track 058° to cross COOPR at or above 4000, then on track 058°. Expect RADAR vectors to final approach course.

LANDING FMY: From TYNEE on track 149° to BANYN, then on track 149°. Expect RADAR vectors to final approach course.

LOST COMMUNICATIONS:

RSW LANDING RUNWAY 6: After SAANN, continue to OBELL, then conduct RWY 6 approach.

RSW LANDING RUNWAY 24: After COOPR, continue to NABAC, then conduct RWY 24 approach.

TYNEE FOUR ARRIVAL (RNAV) Arrival Routes

FORT MYERS, FLORIDA

(TYNEE.TYNEE4) 12JUN25