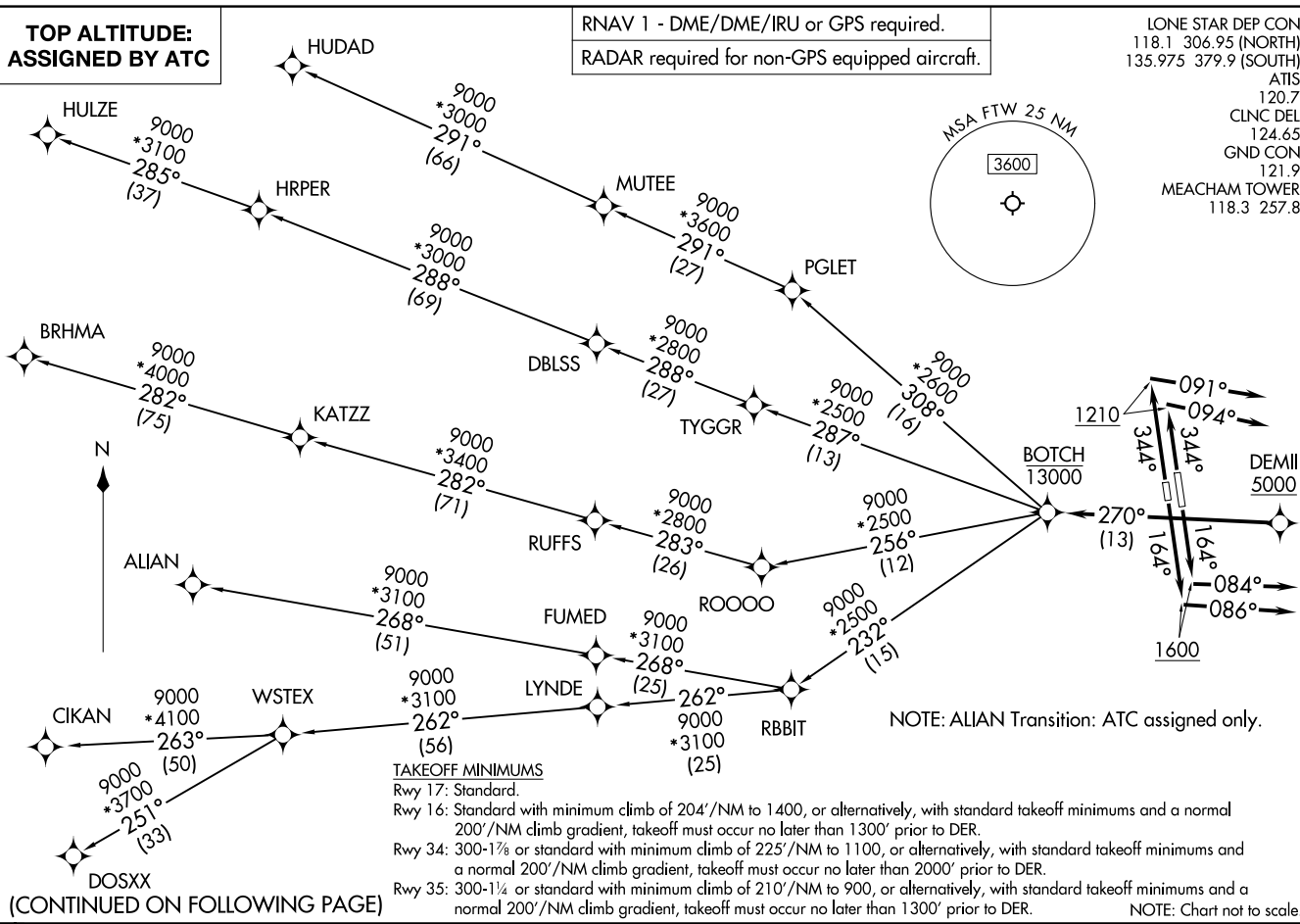


TOP ALTITUDE:  
ASSIGNED BY ATC

BOTCH ONE DEPARTURE (RNAV)  
(BOTCH1 .BOTCH) 17APR25

FORT WORTH, TEXAS  
FORT WORTH MEACHAM INTL (F'W)



(BOTCH1 .BOTCH) 25107  
AL-159 (FAA)

FORT WORTH MEACHAM INTL (F'W)  
FORT WORTH, TEXAS



DEPARTURE ROUTE DESCRIPTION

TAKEOFF RUNWAY 16: Climb on heading 164° to 1600, then on heading 084° or as assigned by ATC, for vectors to cross DEMII at or above 5000, thence. . .  
TAKEOFF RUNWAY 17: Climb on heading 164° to 1600, then on heading 086° or as assigned by ATC, for vectors to cross DEMII at or above 5000, thence. . .  
TAKEOFF RUNWAY 34: Climb on heading 344° to 1210, then on heading 094° or as assigned by ATC, for vectors to cross DEMII at or above 5000, thence. . .  
TAKEOFF RUNWAY 35: Climb on heading 344° to 1210, then on heading 091° or as assigned by ATC, for vectors to cross DEMII at or above 5000, thence. . .

. . .on track 270° to cross BOTCH at or below 13000, then on (transition). Maintain ATC assigned altitude, expect filed altitude 10 minutes after departure.

- ALIAN TRANSITION (BOTCH1.ALIAN)
- BRHMA TRANSITION (BOTCH1.BRHMA)
- CIKAN TRANSITION (BOTCH1.CIKAN)
- DOSXX TRANSITION (BOTCH1.DOSXX)
- HUDAD TRANSITION (BOTCH1.HUDAD)
- HULZE TRANSITION (BOTCH1.HULZE)
- WSTEX TRANSITION (BOTCH1.WSTEX)

SC-2, 22 JAN 2026 to 19 FEB 2026

SC-2, 22 JAN 2026 to 19 FEB 2026