

STRYA EIGHT DEPARTURE (RNAV)

D-ATIS
124.6
CLNC DEL
125.45
CPDLC
GND CON
121.9
HOBBY TOWER
118.7 256.9
HOUSTON DEP CON
132.25 285.425

TOP ALTITUDE:
16000

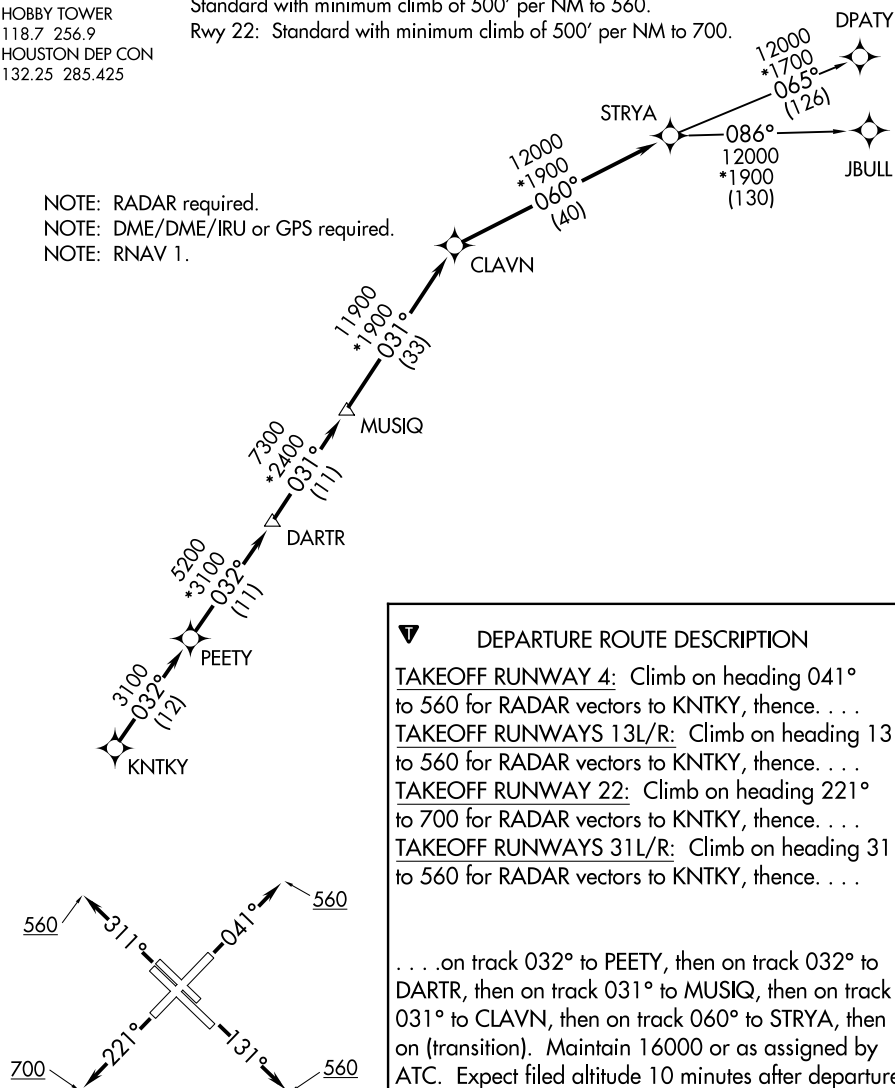
TAKEOFF MINIMUMS

Rwys 4, 13L/R, 31L/R:

Standard with minimum climb of 500' per NM to 560.

Rwy 22: Standard with minimum climb of 500' per NM to 700.

NOTE: RADAR required.
NOTE: DME/DME/IRU or GPS required.
NOTE: RNAV 1.



DEPARTURE ROUTE DESCRIPTION

TAKEOFF RUNWAY 4: Climb on heading 041°

to 560 for RADAR vectors to KNTKY, thence. . . .

TAKEOFF RUNWAYS 13L/R: Climb on heading 131°

to .560 for RADAR vectors to KNTKY, thence

TAKEOFF RUNWAY 22: Climb on heading 221°

to 700 for RADAR vectors to KNTKY thence

TAKEOFF RUNWAYS 311 / R: Climb on heading 311°

to 560 for RADAR vectors to KNTKY, thence...

...on track 032° to PEETY, then on track 032° to DARTR, then on track 031° to MUSIQ, then on track 031° to CLAVN, then on track 060° to STRYA, then on (transition). Maintain 16000 or as assigned by ATC. Expect filed altitude 10 minutes after departure.

DPATY TRANSITION (STRYA8.DPATY)

JBULL TRANSITION (STRYA8.JBULL)

NOTE: Chart not to scale.

STRYA EIGHT DEPARTURE (RNAV)

(STRYA8.STRYA) 07OCT21

HOUSTON, TEXAS

WILLIAM P HOBBY (HOU)