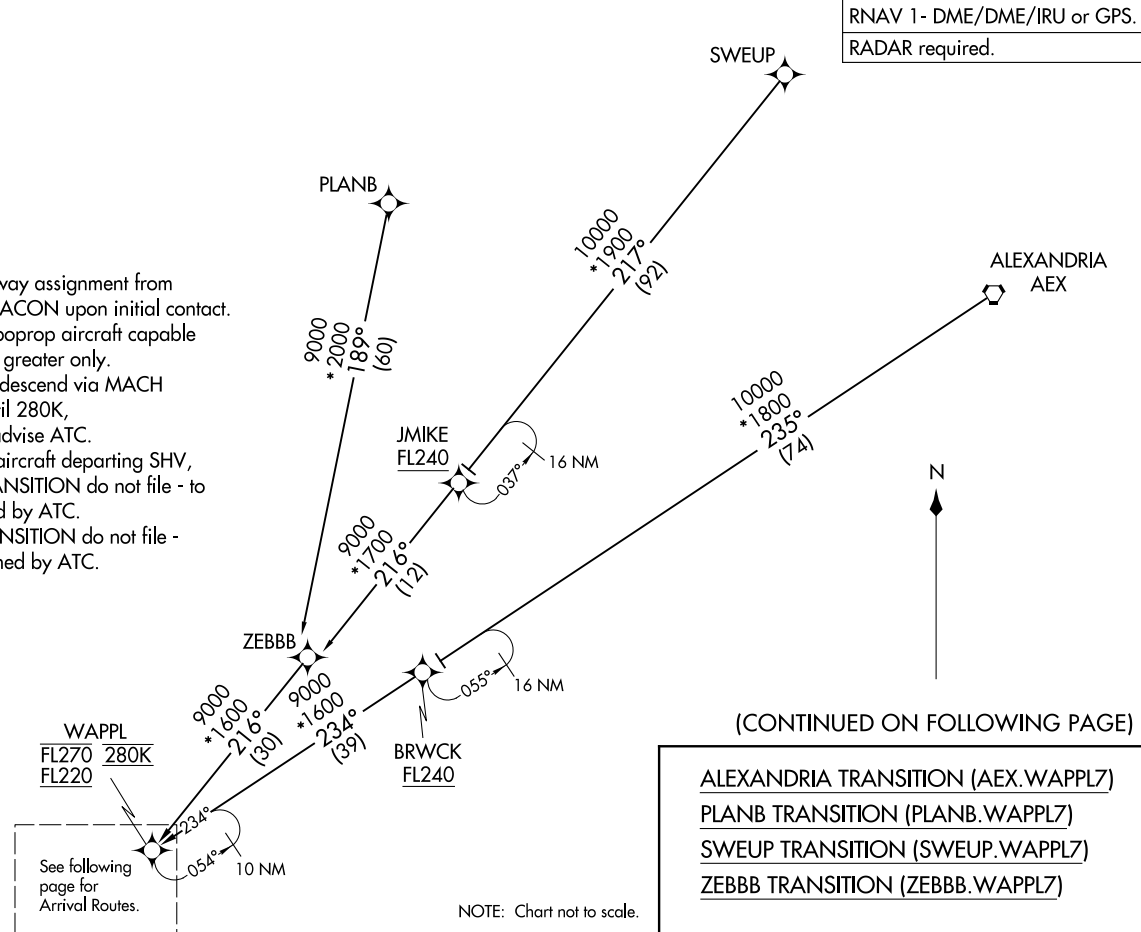


HOUSTON APP CON
120.05 379.1
EFD ATIS
135.575 269.9
HOU D-ATIS
124.6
SGR ATIS
118.125
TME ATIS
119.525

- NOTE: Expect runway assignment from Houston TRACON upon initial contact.
- NOTE: Jet and turboprop aircraft capable of 280K or greater only.
- NOTE: Jet aircraft descend via MACH number until 280K, if unable, advise ATC.
- NOTE: Except for aircraft departing SHV, PLANB TRANSITION do not file - to be assigned by ATC.
- NOTE: ZEBBB TRANSITION do not file - to be assigned by ATC.



RNAV 1 - DME/DME/IRU or GPS.
RADAR required.

WAPPL SEVEN ARRIVAL (RNAV)
(WAPPL.WAPPL7) 12JUN25

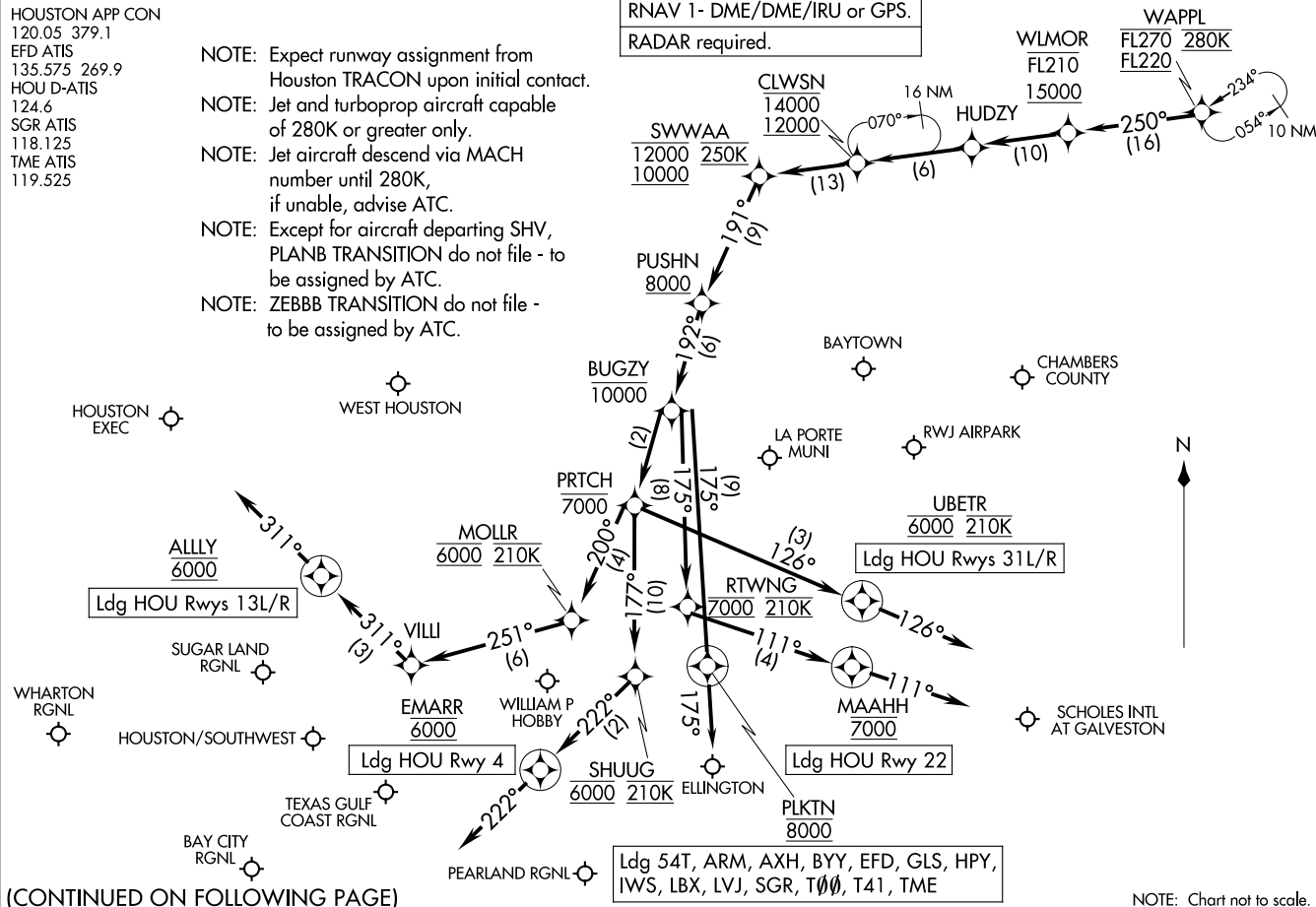
Arrival Routes

HOUSTON, TEXAS

HOUSTON APP CON
120.05 379.1
EFD ATIS
135.575 269.9
HOU D-ATIS
124.6
SGR ATIS
118.125
TME ATIS
119.525

- NOTE: Expect runway assignment from Houston TRACON upon initial contact.
- NOTE: Jet and turboprop aircraft capable of 280K or greater only.
- NOTE: Jet aircraft descend via MACH number until 280K, if unable, advise ATC.
- NOTE: Except for aircraft departing SHV, PLANB TRANSITION do not file - to be assigned by ATC.
- NOTE: ZEBBB TRANSITION do not file - to be assigned by ATC.

RNAV 1- DME/DME/IRU or GPS.
RADAR required.



(CONTINUED ON FOLLOWING PAGE)

WAPPL SEVEN ARRIVAL (RNAV)
(WAPPL.WAPPL7) 251.63

Arrival Routes

HOUSTON, TEXAS

AL-198 (FAA)

ARRIVAL ROUTE DESCRIPTION

From WAPPL on track 250° to cross WLMOR between 15000 and FL210, then on track 250° to HUDZY, then on track 250° to cross CLWSN between 12000 and 14000, then on track 250° to cross SWWAA between 10000 and 12000 and at 250K, then on track 191° to cross PUSHN at or above 8000.

LANDING HOU RUNWAY 4: From PUSHN on track 192° to cross BUGZY at or below 10000, then on track 192° to cross PRTH at or below 7000, then on track 177° to cross SHUUG at 6000 and at 210K, then on track 222° to cross EMARR at 6000, then on track 222°. Expect RADAR vectors to final approach course.

LANDING HOU RUNWAYS 13L/R: From PUSHN on track 192° to cross BUGZY at or below 10000, then on track 192° to cross PRTH at or below 7000, then on track 200° to cross MOLLR at 6000 and at 210K, then on track 251° to VILLI, then on track 311° to cross ALLY at 6000, then on track 311°. Expect RADAR vectors to final approach course.

LANDING HOU RUNWAY 22: From PUSHN on track 192° to cross BUGZY at or below 10000, then on track 175° to cross RTWNG at 7000 and at 210K, then on track 111° to cross MAAHH at 7000, then on track 111°. Expect RADAR vectors to final approach course.

LANDING HOU RUNWAYS 31L/R: From PUSHN on track 192° to cross BUGZY at or below 10000, then on track 192° to cross PRTH at or below 7000, then on track 126° to cross UBETR at 6000 and at 210K, then on track 126°. Expect RADAR vectors to final approach course.

LANDING GLS/TME/AXH/HPY/T41/54T/T00/SGR/ARM/BYY/LBX/LVJ/IWS/EFD:
From WAPPL on track 250° to cross WLMOR between 15000 and FL210, then on track 250° to HUDZY, then on track 250° to cross CLWSN between 12000 and 14000, then on track 250° to cross SWWAA between 10000 and 12000 and at 250K, then on track 191° to cross PUSHN at or above 8000, then on track 192° to cross BUGZY at or below 10000, then on track 175° to cross PLKTN at 8000, then on track 175°. Expect RADAR vectors to final approach course.