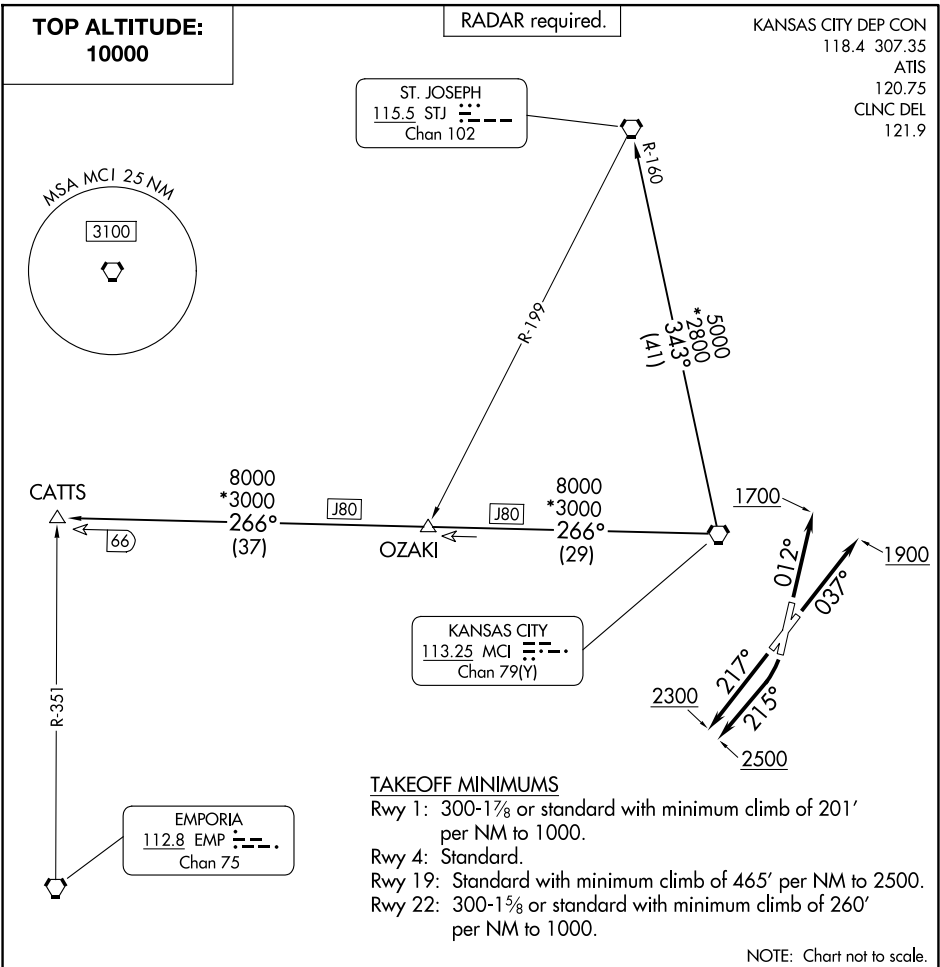


(CHIEF9.MCI) 25107  
CHIEF NINE DEPARTURE

KANSAS CITY DOWNTOWN/WHEELER FLD (MKC)  
AL-213 (FAA) KANSAS CITY, MISSOURI



**DEPARTURE ROUTE DESCRIPTION**

- TAKEOFF RUNWAY 1:** Climb on heading 012° to 1700, thence. . . .
- TAKEOFF RUNWAY 4:** Climb on heading 037° to 1900, thence. . . .
- TAKEOFF RUNWAY 19:** Climbing right turn heading 215° to 2500, thence. . . .
- TAKEOFF RUNWAY 22:** Climb on heading 217° to 2300, thence. . . .
- . . . climb on assigned heading for RADAR vectors to appropriate route. Maintain 10000 or as assigned by ATC, expect filed altitude 10 minutes after departure.
- CATTS TRANSITION (CHIEF9.CATTS):** From over MCI VORTAC on MCI R-266 to CATTS.
- ST. JOSEPH TRANSITION (CHIEF9.STJ):** From over MCI VORTAC on MCI R-343 and STJ R-160 to STJ VORTAC.

CHIEF NINE DEPARTURE  
(CHIEF9.MCI) 05OCT23

KANSAS CITY, MISSOURI  
KANSAS CITY DOWNTOWN/WHEELER FLD (MKC)

NC-3, 22 JAN 2026 to 19 FEB 2026

NC-3, 22 JAN 2026 to 19 FEB 2026