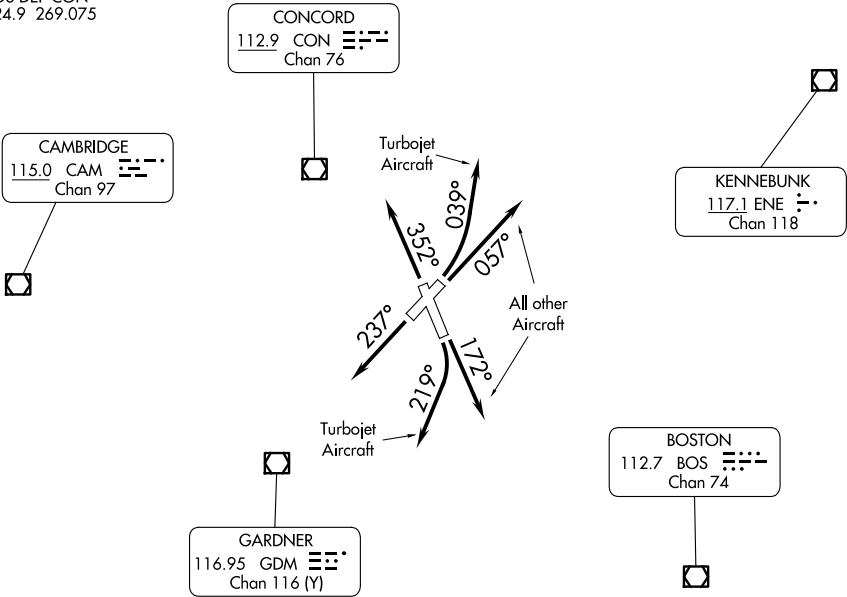


ATIS  
119.55  
CLNC DEL  
135.9  
GND CON  
121.9  
MANCHESTER TOWER  
121.3 239.025  
BOS DEP CON  
124.9 269.075

TOP ALTITUDE:  
3000



TAKEOFF MINIMUMS:

- Rwy 6: Standard.  
Rwy 17: 300-1½ or standard with a minimum climb of 270' per NM to 600.  
Rwy 24: Standard with a minimum climb of 335' per NM to 800.  
Rwy 35: 300-1½ or standard with a minimum climb of 265' per NM to 1400.

NOTE: RADAR required.

NOTE: Chart not to scale.

DEPARTURE ROUTE DESCRIPTION

- TAKEOFF RUNWAY 6: TURBOJET AIRCRAFT - Climbing left turn heading 039°, thence....  
ALL OTHER AIRCRAFT - Climb on heading 057° or as assigned by ATC, thence....  
TAKEOFF RUNWAY 17: TURBOJET AIRCRAFT - Climbing right turn heading 219°, thence....  
ALL OTHER AIRCRAFT - Climb on heading 172° or as assigned by ATC, thence....  
TAKEOFF RUNWAY 24: Climb on heading 237° or as assigned by ATC, thence....  
TAKEOFF RUNWAY 35: Climb on heading 352° or as assigned by ATC, thence....

....expect vectors to assigned route/navaid/fix. Maintain 3000 or as assigned by ATC.  
Expect clearance to filed altitude/flight level within five (5) minutes after departure.