

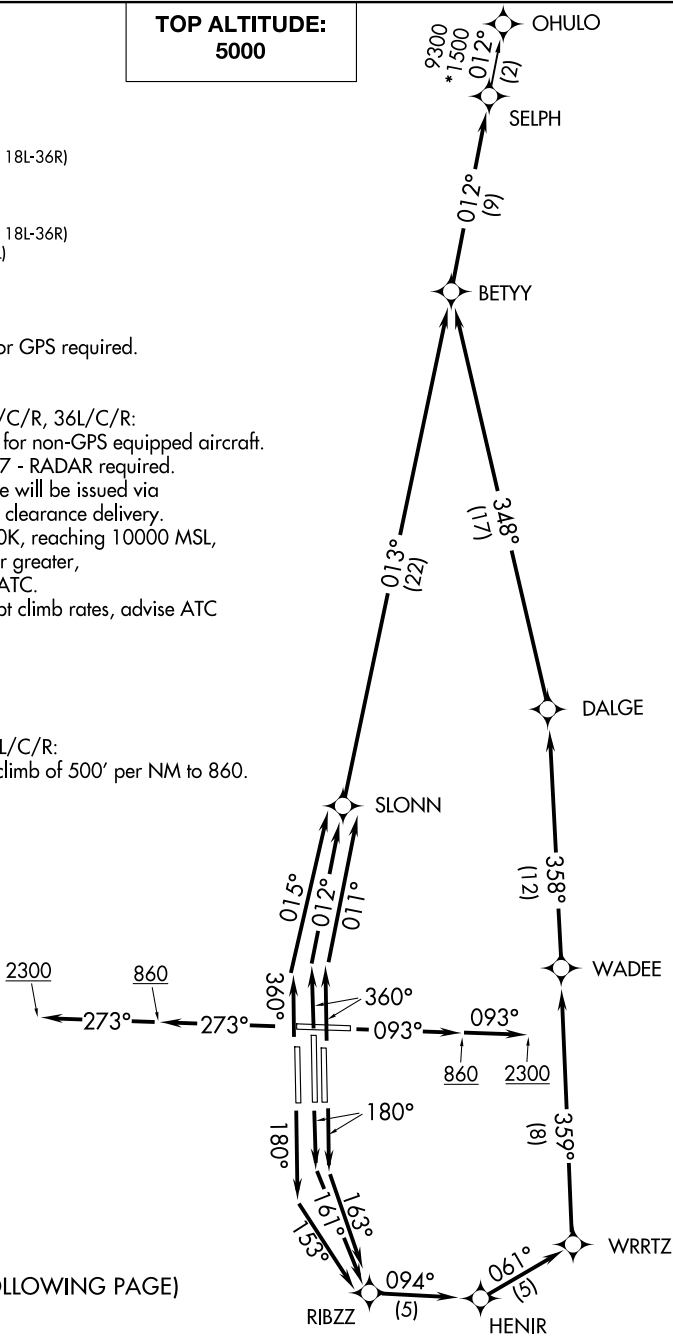
SELPH SEVEN DEPARTURE (RNAV)

D-ATIS
127.75
CLNC DEL
125.2
CPDLC
GND CON
121.0 379.2 (Rwy 9-27)
121.9 379.2 (Rwys 18C-36C, 18L-36R)
121.65 379.2 (Rwy 18R-36L)
MEMPHIS TOWER
118.3 257.8 (Rwy 9-27)
119.7 257.8 (Rwys 18C-36C, 18L-36R)
128.425 257.8 (Rwy 18R-36L)
MEMPHIS DEP CON
124.15 385.45

TOP ALTITUDE:
5000

- NOTE: DME/DME/IRU or GPS required.
NOTE: RNAV 1.
NOTE: Turbojets only.
NOTE: Takeoff Rwy 18L/C/R, 36L/C/R:
RADAR required for non-GPS equipped aircraft.
NOTE: Takeoff Rwy 9, 27 - RADAR required.
NOTE: Transponder code will be issued via
PDC or Memphis clearance delivery.
NOTE: Accelerate to 250K, reaching 10000 MSL,
maintain 250K or greater,
if unable advise ATC.
NOTE: If unable to accept climb rates, advise ATC
on initial contact.

TAKEOFF MINIMUMS:
Rwy 9, 18L/C/R, 27, 36L/C/R:
Standard with minimum climb of 500' per NM to 860.



(CONTINUED ON FOLLOWING PAGE)

NOTE: Chart not to scale.

	<div><div>▼</div><div>DEPARTURE ROUTE DESCRIPTION</div><div><div>TAKEOFF RUNWAY 9:</div><div>Climb on heading 093° to 860, then continue climb to 2300 on heading 093° or as assigned by ATC, for RADAR vectors to BETYY, then on depicted route to SELPH, thence . . .</div></div><div><div>TAKEOFF RUNWAY 18C:</div><div>Climb on heading 180° to intercept course 161° to RIBZZ, then on depicted route to SELPH, thence . . .</div></div><div><div>TAKEOFF RUNWAY 18L:</div><div>Climb on heading 180° to intercept course 163° to RIBZZ, then on depicted route to SELPH, thence . . .</div></div><div><div>TAKEOFF RUNWAY 18R:</div><div>Climb on heading 180° to intercept course 153° to RIBZZ, then on depicted route to SELPH, thence . . .</div></div><div><div>TAKEOFF RUNWAY 27:</div><div>Climb on heading 273° to 860, then continue climb to 2300 on heading 273° or as assigned by ATC, for RADAR vectors to BETYY, then on depicted route to SELPH, thence . . .</div></div><div><div>TAKEOFF RUNWAY 36C:</div><div>Climb on heading 360° to intercept course 012° to SLONN, then on depicted route to SELPH, thence . . .</div></div><div><div>TAKEOFF RUNWAY 36L:</div><div>Climb on heading 360° to intercept course 015° to SLONN, then on depicted route to SELPH, thence . . .</div></div><div><div>TAKEOFF RUNWAY 36R:</div><div>Climb on heading 360° to intercept course 011° to SLONN, then on depicted route to SELPH, thence . . .</div></div><div><div>. . . maintain 5000. Expect clearance to filed altitude within ten (10) minutes after departure.</div></div><div><div>OHULO TRANSITION (SELPH7.OHULO)</div></div></div>	
--	---	--

SE-1, 22 JAN 2026 to 19 FEB 2026

SE-1, 22 JAN 2026 to 19 FEB 2026