

BNGOS FOUR DEPARTURE (RNAV)  
(BNGOS4.BNGOS) 21 MAR 24

Departure Routes

MIAMI, FLORIDA  
MIAMI INTL (MIA)

BNGOS See following page  
for transition routes.

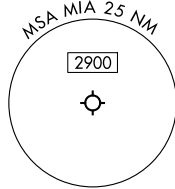
RNAV-1 DME/DME/IRU or GPS.  
RADAR required.

**TOP ALTITUDE:**  
**5000**

MIAMI DEP CON  
126.85 290.325  
D-ATIS  
133.675  
CLNC DEL  
135.35  
CPDLC  
GND CON  
(8L/R, 12, 26L/R)  
121.8 348.6  
(9, 27, 30)  
127.5 348.6  
MIAMI TOWER  
118.3 256.9

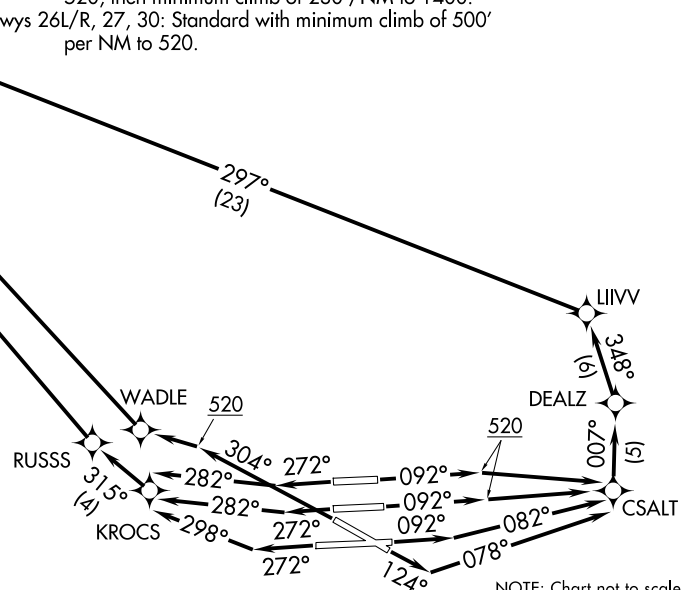
#### TAKEOFF MINIMUMS

Rwy 8L: Standard with minimum climb of 500'/NM to 520, then minimum climb of 215'/NM to 1400.  
Rwy 8R: Standard with minimum climb of 500'/NM to 520, then minimum climb of 235'/NM to 1400.  
Rwy 9: Standard with minimum climb of 500'/NM to 520, then minimum climb of 240'/NM to 1400.  
Rwy 12: Standard with minimum climb of 500'/NM to 520, then minimum climb of 230'/NM to 1400.  
Rwys 26L/R, 27, 30: Standard with minimum climb of 500' per NM to 520.



NOTE: Jet aircraft only.  
NOTE: Accelerate to 250K until leaving 10000, if unable, advise ATC.  
NOTE: MERKS Transition ATC assigned only except aircraft landing: MKY, RSW, APF, PGD and FMY.

(CONTINUED ON FOLLOWING PAGE)



(BNGOS4.BNGOS) 26331  
BNGOS FOUR DEPARTURE (RNAV)

AL-257 (FAA)  
Departure Routes

MIAMI INTL (MIA)  
MIAMI, FLORIDA

