

FLMGO TWO DEPARTURE(RNAV) Departure Routes

AL-257 (FAA)

MIAMI INTL (MIA)
MIAMI, FLORIDA

See following page
for transition routes

△ FLMGO

TOP ALTITUDE:
5000

| | |
|-------------------|-------------|
| MIAMI DEP CON | |
| 126.85 | 290.325 |
| D-ATIS | |
| | 133.675 |
| CLNC DEL | |
| | 135.35 |
| CPDLC | |
| GND CON | |
| (8L/R, 12, 26L/R) | |
| 348.6 | (9, 27, 30) |
| MIAMI TOWER | |
| 118.3 | 256.9 |

TAKEOFF MINIMUMS

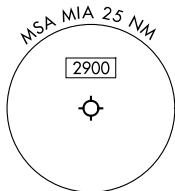
Rwy 8L: Standard with minimum climb of 500'/NM to 520, then minimum climb of 215' to 1400.

Rwy 8R: Standard with minimum climb of 500'/NM to 520, then minimum climb of 235' to 1400.

Rwy 9: Standard with minimum climb of 500'/NM to 520, then minimum climb of 240' to 1400.

Rwy 12: Standard with minimum climb of 500' /NM to 520, then minimum climb of 230' to 1400.

Rwys 26L/R, 27, 30: Standard with minimum climb of 500'/NM to 520.



RNAV 1 - DME/DME/IRU or GPS.

RADAR required.

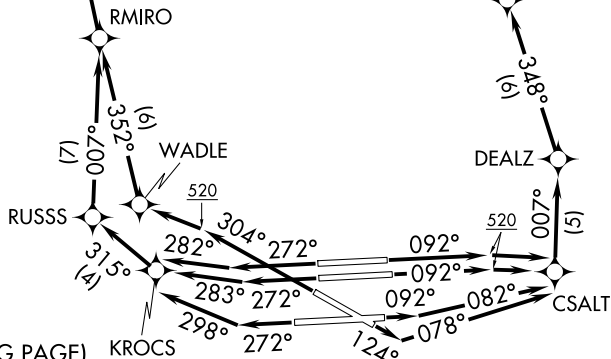
NOTE: Jet aircraft only.

NOTE: Accelerate to 250K until leaving 10000, if unable, advise ATC.

NOTE: WAPOM Transition ATC assigned except aircraft landing: MCO, DAB, and MLB terminal areas.

NOTE: Chart not to scale.

(CONTINUED ON FOLLOWING PAGE)



FLMGO TWO DEPARTURE(RNAV) Departure Routes

(FLMGO2.FLMGO) 21MAR24

MIAMI, FLORIDA
MIAMI INTL (MIA)

SE-3, 22 JAN 2026 to 19 FEB 2026

