

(BLUEM.BLUEM4) 21112

MINNEAPOLIS-ST PAUL INTL/WOLD-CHAMBERLAIN (MSP)

## BLUEM FOUR ARRIVAL (RNAV) Transition Routes

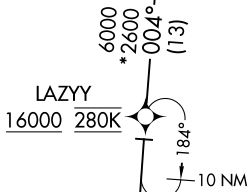
AL-264 (FAA)

MINNEAPOLIS, MINNESOTA

MINNEAPOLIS APP CON  
135.475 335.5  
D-ATIS ARR  
135.35 239.275

BLUEM  
11000 280K

See following  
page for  
Arrival Routes.



8000  
2800  
004°-  
(28)

NOTE: RADAR required.

NOTE: RNAV 1.

NOTE: DME/DME/IRU or GPS required.

NOTE: For turbojet aircraft only.

NOTE: Expect "descend via" clearance and runway transition assignment by Center. Approach will assign landing runway.

NOTE: Turbojet aircraft descend via Mach number until intercepting 280K. Maintain 280K

until slowed by the STAR, or assigned by ATC.

NOTE: HELLO transition ATC assigned only.

OOPEE  
FL240

8000  
3000  
004°-  
(43)

8000  
\*3000  
334.  
(48)

HELLO ✨

KICKR 

8000  
\*2500  
335  
(26)

MNOSO 

NOTE: Chart note to scale.

(CONTINUED ON FOLLOWING PAGE)

HELLO TRANSITION (HELLO.BLUEM4)

### KICKR TRANSITION (KICKR.BLUEM4)

## LAZYY TRANSITION (LAZYY.BLUEM4)

### MNOSO TRANSITION (MNOSO.BLUEM4)

OOPEE TRANSITION (OOPEE.BLUEM4)

## BLUEM FOUR ARRIVAL (RNAV) Transition Routes

MINNEAPOLIS, MINNESOTA

(BLUEM.BLUEM4) 22APR21

MINNEAPOLIS-ST PAUL INTL/WOLD-CHAMBERLAIN (MSP)

NC-1, 22 JAN 2026 to 19 FEB 2026

NC-1, 22 JAN 2026 to 19 FEB 2026

