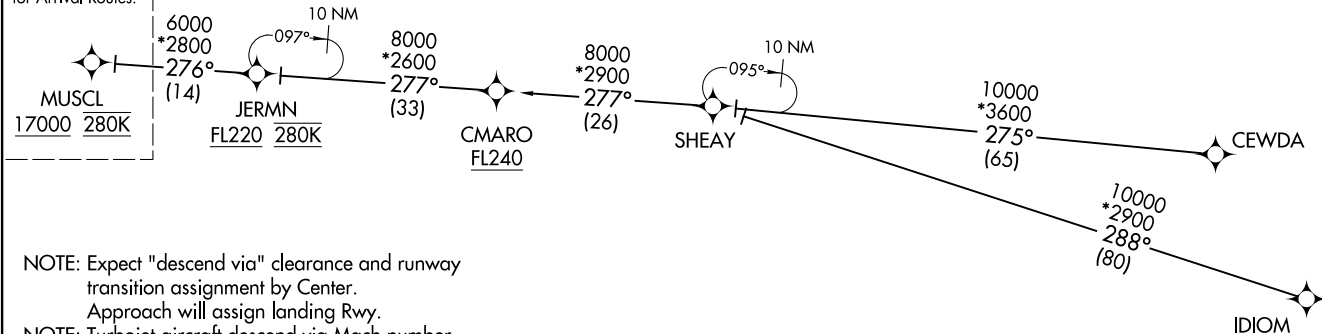


MINNEAPOLIS APP CON
126.35 335.5
D-ATIS ARR
135.35 239.275

See following page
for Arrival Routes.



NOTE: Expect "descend via" clearance and runway transition assignment by Center.
Approach will assign landing Rwy.
NOTE: Turbojet aircraft descend via Mach number until intercepting 280K. Maintain 280K until slowed by the STAR, or assigned by ATC.
NOTE: DME/DME/IRU or GPS required.
NOTE: For turbojet aircraft only.
NOTE: RADAR required.
NOTE: RNAV 1.

CEWDA TRANSITION (CEWDA.MUSCL3)
CMARO TRANSITION (CMARO.MUSCL3)
IDIOM TRANSITION (IDIOM.MUSCL3)
JERMN TRANSITION (JERMN.MUSCL3)
SHEAY TRANSITION (SHEAY.MUSCL3)

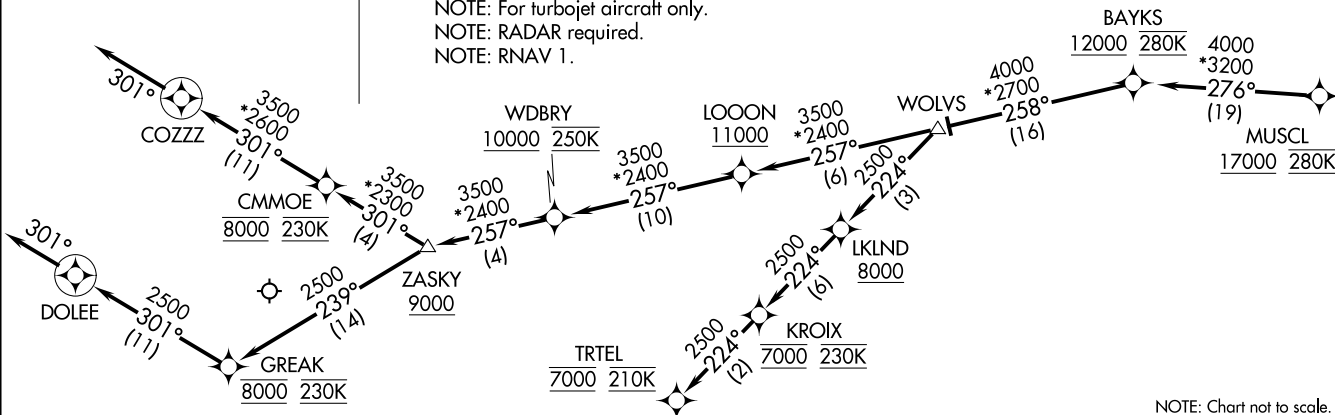
(CONTINUED ON FOLLOWING PAGE)

NOTE: Chart not to scale.

MINNEAPOLIS APP CON
126.35 335.5
D-ATIS ARR
135.35 239.275



NOTE: Expect "descend via" clearance and runway transition assignment by Center.
Approach will assign landing Rwy.
NOTE: Turbojet aircraft descend via Mach number until intercepting 280K.
Maintain 280K until slowed by the STAR, or assigned by ATC.
NOTE: DME/DME/IRU or GPS required.
NOTE: For turbojet aircraft only.
NOTE: RADAR required.
NOTE: RNAV 1.



ARRIVAL ROUTE DESCRIPTION

From MUSCL on track 276° to cross BAYKS at or above 12000 and at 280K, then on track 258° to WOLVS.

LANDING RUNWAYS 4, 12L, 17, 22: From WOLVS on track 257° to cross LOOON at or above 11000, then on track 257° to cross WDBRY at or above 10000 and at 250K, then on track 257° to cross ZASKY at or above 9000, then on track 301° to cross CMMOE at 8000 and at 230K, then on track 301° to COZZZ, then on track 301°. Expect RADAR vectors to final approach course.

LANDING RUNWAYS 12R, 35: From WOLVS on track 257° to cross LOOON at or above 11000, then on track 257° to cross WDBRY at or above 10000 and at 250K, then on track 257° to cross ZASKY at or above 9000, then on track 239° to cross GREAK at 8000 and at 230K, then on track 301° to DOLEE, then on track 301°. Expect RADAR vectors to final approach course.

LANDING RUNWAYS 30L/R: From WOLVS on track 224° to cross LKLN at or above 8000, then on track 224° to cross KROIX at 7000 and at 230K, then on track 224° to cross TRTEL at 7000 and at 210K. Expect RNAV (RNP), RNAV (GPS), or ILS approach or RADAR vectors to final approach course.