

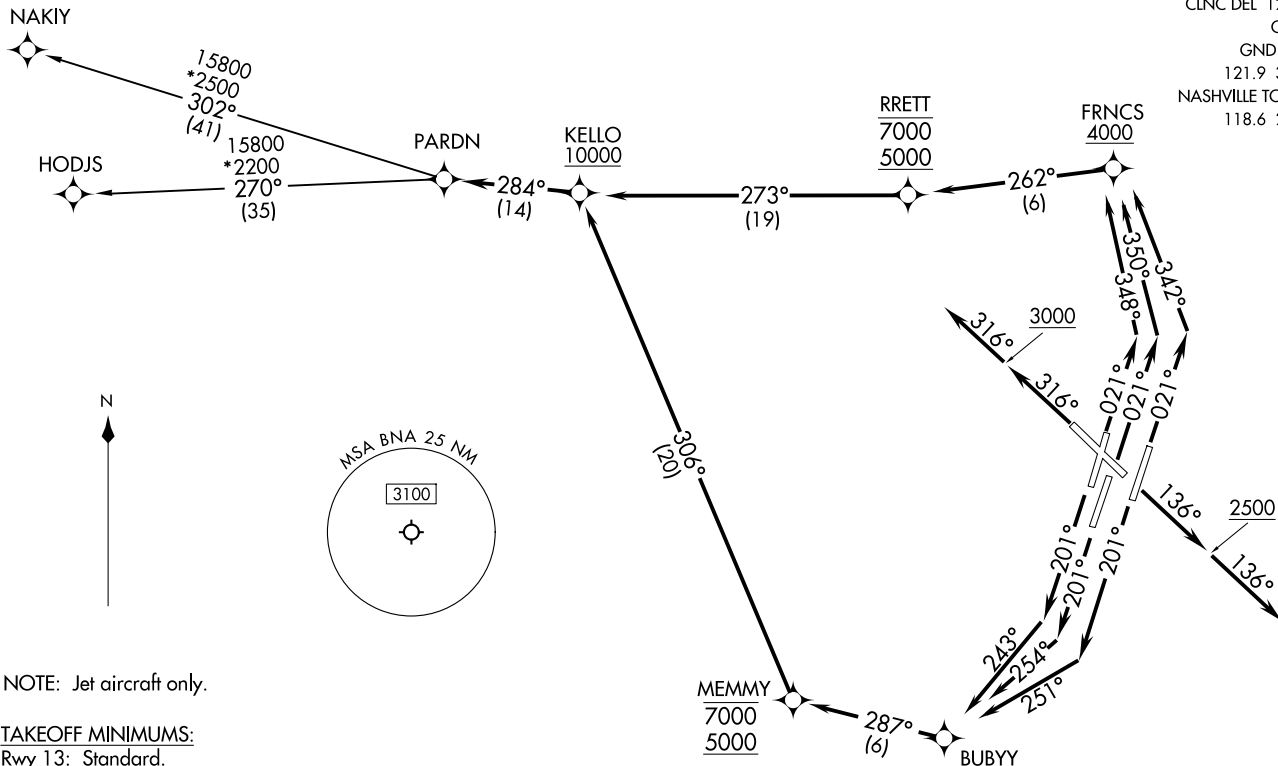
PARDN FOUR DEPARTURE (RNAV)  
(PARDN4.PARDN) 22NOV25

NASHVILLE, TENNESSEE  
NASHVILLE INTL (BNA)

**TOP ALTITUDE:**  
**15000**

RNAV 1 - DME/DME/IRU or GPS.  
RADAR required.

NASHVILLE DEP CON  
119.35 372.0  
D-ATIS 135.1  
CLNC DEL 126.05  
CPDLC  
GND CON  
121.9 348.6  
NASHVILLE TOWER  
118.6 257.8



(CONTINUED ON FOLLOWING PAGE)

NOTE: Chart not to scale.

(PARDN4.PARDN) 25331  
PARDN FOUR DEPARTURE (RNAV)

AL-282 (FAA)

NASHVILLE INTL (BNA)  
NASHVILLE, TENNESSEE



DEPARTURE ROUTE DESCRIPTION

TAKEOFF RUNWAY 2L: Climb on heading 021° to intercept course 348° to cross FRNCS at or above 4000, then on track 262° to cross RRETT between 5000 and 7000, then on track 273° to cross KELLO at or above 10000, thence. . . .

TAKEOFF RUNWAY 2C: Climb on heading 021° to intercept course 350° to cross FRNCS at or above 4000, then on track 262° to cross RRETT between 5000 and 7000, then on track 273° to cross KELLO at or above 10000, thence. . . .

TAKEOFF RUNWAY 2R: Climb on heading 021° to intercept course 342° to cross FRNCS at or above 4000, then on track 262° to cross RRETT between 5000 and 7000, then on track 273° to cross KELLO at or above 10000, thence. . . .

TAKEOFF RUNWAY 13: Climb on heading 136° to 2500, then on heading 136° or as assigned by ATC for RADAR vectors to cross KELLO at or above 10000, thence. . . .

TAKEOFF RUNWAY 20L: Climb on heading 201° to intercept course 251° to BUBYY, then on track 287° to cross MEMMY between 5000 and 7000, then on track 306° to cross KELLO at or above 10000, thence. . . .

TAKEOFF RUNWAY 20C: Climb on heading 201° to intercept course 254° to BUBYY, then on track 287° to cross MEMMY between 5000 and 7000, then on track 306° to cross KELLO at or above 10000, thence. . . .

TAKEOFF RUNWAY 20R: Climb on heading 201° to intercept course 243° to BUBYY, then on track 287° to cross MEMMY between 5000 and 7000, then on track 306° to cross KELLO at or above 10000, thence. . . .

TAKEOFF RUNWAY 31: Climb on heading 316° to 3000, then on heading 316° or as assigned by ATC for RADAR vectors to cross KELLO at or above 10000, thence. . . .

. . . on track 284° to PARDN. Maintain 15000. Expect filed altitude 10 minutes after departure.

HODJS TRANSITION (PARDN4.HODJS)  
NAKIY TRANSITION (PARDN4.NAKIY)