

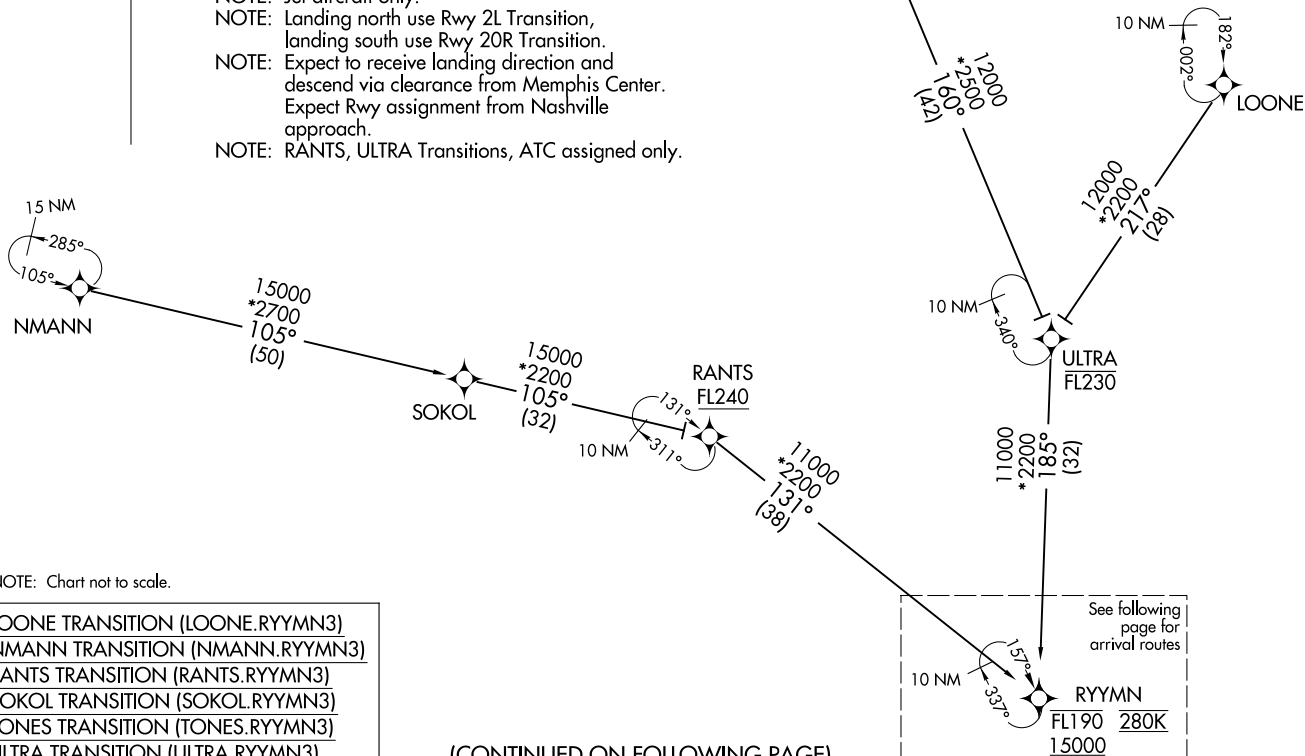
# RYMN THREE ARRIVAL (RNAV) Transition Routes

RNAV 1 - DME/DME/IRU or GPS.  
RADAR required.

NASHVILLE APP CON  
119.35 372.0  
D-ATIS  
135.1



- NOTE: Jet aircraft only.  
NOTE: Landing north use Rwy 2L Transition, landing south use Rwy 20R Transition.  
NOTE: Expect to receive landing direction and descend via clearance from Memphis Center. Expect Rwy assignment from Nashville approach.  
NOTE: RANTS, ULTRA Transitions, ATC assigned only.



(CONTINUED ON FOLLOWING PAGE)

NOTE: Chart not to scale.

LOONE TRANSITION (LOONE.RYMN3)  
NMANN TRANSITION (NMANN.RYMN3)  
RANTS TRANSITION (RANTS.RYMN3)  
SOKOL TRANSITION (SOKOL.RYMN3)  
TONES TRANSITION (TONES.RYMN3)  
ULTRA TRANSITION (ULTRA.RYMN3)

RNAV 1 - DME/DME/IRU or GPS.
RADAR required.

NASHVILLE, TENNESSEE  
NASHVILLE INTL (BNA)